

# Defeat of Millage Would Be Disastrous to Schools

The Chelsea Board of Education, after much study and an agonizing 5½ hour meeting Monday, March 31, determined to cut whopping \$470,500 from the upcoming school budget in the event of a millage failure.

Identification of the specific program reductions was the result of citizens requesting the board to inform voters of the cuts to be made in the event of a millage defeat.

Cuts will almost certainly be made in the wake of such a defeat state equalized valuation, state aid formula and student enrollments remain as projected in the 1980-81 budget.

Most visible and certainly the most emotional item on the list of probable reductions is a formidable \$70,800 cut eliminating all extra-curricular activities, including all athletics, vocal music,

debate, forensics, high school and middle school bands, yearbook, newspaper, orchestra and drill team.

The school board will save \$61,500 by excising the athletic programs and \$9,300 through the elimination of all other extra-curricular programs.

Another sizeable chunk, \$65,500 in all, will be saved by cancelling two new school buses already ordered and the elimination of transportation to extra-curricular activities.

A total of \$83,000 will be trimmed in the area of high school staff and program reductions. Eliminations here would include a social studies teacher, graphic arts program, building trades program, athletic director, a secretarial position, and the nurse aide program.

Long-neglected equipment replacement would be postponed even further, with \$52,000 in such replacement removed from the budget.

Special education would lose \$31,000, including the elimination of one teacher, one-half speech teacher and ancillary services to non-public instruction.

Other casualties will be the gifted and talented program, summer driver education program, media supplies, and the Beach school pool, which will be closed for summer activities and used only for physical education.

Also hit hard would be Community Education, losing a total of \$13,000 in senior citizens programs, reduction in staff and elimination of program brochures and a limiting of facility use to two nights per week.

It should be noted, said Superintendent Ray Van Meer, that in addition to the \$470,500 proposed reductions for 1980-81, the Chelsea schools last year reduced their budget by \$217,718.

Last year's reduction was due to millage failures when the schools requested a 1.7 mill increase. That large cut was reduced by program reductions of \$143,305 and expending the existing cash balance of \$74,413, which had taken three years to accumulate.

The prognosis of another millage defeat, said Van Meer, has budget ramifications affecting programs costing \$688,218 in the past two years. Chelsea schools have not had an increase in operational millage since August 1977.

Following is a complete, itemized list of the proposed cuts:

Instructional supplies, \$25,000; textbook replacements, \$4,500; equipment replacement, \$52,000.

Special education services, \$31,000 total: eliminate one teacher, \$10,000; half speech teacher, \$11,000; ancillary services to non-public instruction, \$10,000.

Community education, \$13,000 total: senior citizens, \$2,000; limit facility use to two nights per week, \$5,000; and reduction in secretary, teacher, supplies, program brochures, \$6,000.

Elementary staff and programs, \$34,000 total: gifted and talented program, \$19,000; eliminate one teacher, \$15,000.

Beach Middle school staff and program reductions, \$22,500 total: eliminate one staff member, \$15,000; eliminate one-half counselor position, \$7,500.

Summer driver education program, \$8,000; administrative reductions, \$10,000; media supplies, \$10,000; field trips, \$7,200.

Summer instructional programs, \$9,000 total: middle and high school band and orchestra, \$2,300; agriculture, \$1,300; work study, \$2,300; auto mechanics-shop maintenance, \$3,100.

Custodial and maintenance, \$15,000 total: one custodian, \$11,000; maintenance supplies, \$4,000.

Swimming pool use restricted to physical education, closed for summer activities, \$10,000.

High school staff and program reductions, \$83,000 total: computer instruction, \$3,500; social studies teacher, \$7,000; graphic arts program, \$22,200; building trades program, \$12,000; secretarial position, \$8,000; half counselor position, \$7,500;

All athletics, \$61,500 total: middle school, \$9,500; freshmen, \$3,000; junior varsity, \$8,000; varsity, \$23,000; athletic board subsidy, \$18,000.

All other extra-curricular, \$9,300 total, including vocal music, debate, forensics, high school and middle school band, yearbook, newspaper, orchestra and drill team.

athletic director/physical education instructor, \$15,000; media aide, \$4,800; nurse aide program, \$3,000.

Eliminate all extra-curricular activities, \$70,800 total, broken down as follows:

Transportation, \$65,500 total: cancel two new buses previously ordered, \$47,000; extra-curricular transportation, \$11,000; and gas, oil, parts reduction, \$7,500.

## WEATHER

	Max.	Min.	Precip.
Thursday, March 27	48	31	0.00
Friday, March 28	39	28	Trace
Saturday, March 29	48	35	0.29
Sunday, March 30	52	37	0.49
Monday, March 31	42	32	0.01
Tuesday, April 1	45	34	Trace
Wednesday, April 2	56	40	0.00

# The Chelsea Standard

## QUOTE

"We do not inherit the land from our fathers, we borrow it from our children."

—Author Unknown.

ONE HUNDRED-TENTH YEAR—No. 43

16 Pages This Week

CHELSEA, MICHIGAN, THURSDAY, APRIL 3, 1980

USPS 101-720

25¢ per copy

SUBSCRIPTION: \$8.00 PER YEAR

## Holy Week Services Set By Churches

With the celebration of Easter drawing near, local churches have scheduled services commemorating the passion, death and resurrection of Christ, beginning Maundy (or Holy) Thursday and ending on Easter Sunday morning, April 3-6.

Zion Lutheran church, Rogers Corners, will have a Good Friday worship service with Communion at 1:30 p.m. On Saturday, the Luther League will meet at 10 a.m. to color Easter eggs.

Easter Sunday, Zion will celebrate a sunrise service at 7 a.m., followed by an Easter breakfast at 8 a.m. At 9 a.m., a movie, "Journey Into Faith" will be shown, followed by Festival Worship with Communion at 10:15 a.m.

First United Methodist on Park St. will have a Maundy Thursday Silent Communion service at 7 p.m. Members of the church will participate in the Community Good Friday service at St. Paul United Church of Christ, 1 p.m.

Easter sunrise service at 7 a.m. will be followed by a 7:45 a.m. breakfast. Regular worship services will be held at 9 and 10 a.m.

A re-creation of the Last Supper with Communion will be the

Maundy Thursday service at Unadilla Presbyterian church at 7:30 p.m. Church members may attend one of two area Good Friday observance services at Plainfield Methodist church. The 1 p.m. service will be led by the Rev. David Brinkman of Gregory Baptist church. Ms. Peggy Hall of Unadilla Presbyterian will preach at the 2 p.m. service.

Sunday, Unadilla Presbyterian will hold a "church family" breakfast at 9 a.m. A special offering will be taken at the 11 a.m. worship service for world relief.

Chelsea Free Methodist church, which meets at St. Barnabas Episcopal church on Old US-12, will hold a 6:30 sunrise service on Easter Sunday, followed by breakfast. Sunday school will meet at 3:45 p.m. and an Easter celebration in song and spoken word will be held at 5 p.m.

Maundy Thursday service at Faith Evangelical Lutheran church, North Territorial Rd., will be a Communion service at 8 p.m. Good Friday worship at 8 p.m. will have the theme, "My God, My God, Why Hast Thou Forsaken Me?"

Easter Sunday at Faith Evangelical will begin at 6:30 a.m. with a sunrise service. Theme will be "The Fulfillment of Old Testament Prophecies of Jesus' Resurrection," followed by Easter breakfast. Bible games will be played in place of regular Sunday school.

A 10 a.m. Sunday service will feature a sermon on Luke 24, the story of Jesus meeting the disciples on the way to Emmaus.

A Maundy Thursday Communion service will be held at 7:30 p.m. at First Congregational church of Chelsea, E. Middle St. A prayer vigil with Communion will be held Holy Saturday from 6 to 9 p.m. Easter Sunday services at the church will be at 8 and 10:30 a.m.

St. Mary Catholic church, Old US-12, will begin week-end services with a Holy Thursday Mass of the Lord's Supper at 7:30 p.m., with adoration until midnight. A solemn liturgical ceremony of the Passion will begin at 1 p.m. Friday, with Stations of the Cross at 7 p.m. Friday.

The Vigil of Easter at St. Mary's begins at 8 p.m. Saturday with the first Mass of Easter. Easter Sunday Masses will be celebrated at 8 a.m., 10 a.m. and noon.

Good Friday services will be held Friday in the Chelsea Community Hospital dining room. The Rev. Robert Weikart will present the inter-faith service beginning at 1:45 p.m. and all in the community are welcome to attend.

Our Savior Lutheran church, Main St., presents a traditional Passover Seder meal at 6:30 p.m. Thursday, followed by a service at 7:45 p.m. On Friday, the church will observe a 7:30 p.m. solemn service of Tenebrae, at which candles are extinguished as the words of Christ are read.

A sunrise service of scripture and songs will begin at 6:30 a.m. Sunday. An Easter breakfast will be held at 8 a.m. and Easter Festival Worship with Communion will take place at 10:30 a.m.

(Continued on page four)



KIRSTIE MEYER gives a convincing imitation of the face on his cheeseburger lunch at the Chelsea Hospital dining room last Friday. Kirstie and other children of the Chelsea Hospital Day Care Center, enjoyed a lunch featuring good nutrition and the four food groups following a week of nutrition education by hospital dietician Pat Asp.

## Lima Township Group Starts Cemetery Clean-Up

A committee of Lima township residents, meeting March 27, has decided to launch a clean-up effort at Porter Cemetery in Jerusalem at the corner of Sager and Fletcher Rds.

Volunteers are needed to help with the project on Saturday, April 12, beginning at 9 a.m. Several pick-up trucks will also be needed to haul away the brush and branches.

The cemetery is in a historic area and the group is also asking for donations from interested residents to help beautify the site.

Porter Cemetery was founded in 1839, when Noah Porter gave the land to the township for a cemetery.

Porter had arrived in the area in 1834, purchasing land in the vicinity of the cemetery and running a mill he bought from a local resident.

The area soon became known as Porterville and the school building, which still stands near the cemetery, was called Porter school.

In 1843, the Porter family left the area for Lenawee county and still another mill, but the name remained.

Margaret Sias, who has done some historical research on the area, estimates that the last burial at the cemetery took place about 15 years ago. The earliest

## Easter Egg Hunt Set For Saturday

That certain breath of spring in the air (be it ever so faint), is a sure sign that the Easter Bunny is on his way.

This year, he'll be stopping in again to preside over the Chelsea Jaycees' annual Easter Egg Hunt at the Chelsea High school athletic field.

At 11 a.m. Saturday, April 5, the Bunny will signal the start of the hunt, which will be divided into groups by age, ranging from pre-school through second grade.

Prizes will be given for those children picking up extra-special eggs. All children are asked to bring their own containers.

grave stone bears the date July 1834, and marks the grave of a Baptist minister.

Also in the cemetery is a stone erected to the memory of William Wedemeyer, who died in 1913 in the Panama Canal zone.

Donations to help in refurbishing the historical graveyard

may be sent to Porter Cemetery in care of 13050 Sager Rd., Chelsea, or 620 Lima Center Rd., Dexter.

For more information on the clean-up, call Helen Valant, 475-2575, or committee members Harold Gross, Ray Parson, Robert Heller or Kay Kyte.



WEEDS AND TALL GRASS choke the aged gravestones in the Porter Cemetery at the corner of Sager and Fletcher Rds. A committee of Lima residents is looking for volunteers to aid in

## Township Budgets Hit By Inflation

Six area townships held their annual meetings last Saturday and inflation made its presence known in all proposed budgets for the next year.

Budget increases averaged 18 to 20 percent, which just about keeps pace with the estimated 1980 inflation rate.

Sharon and Scio townships are on a different fiscal year and will hold their annual meetings in June.

### Lima Township

Lima township increased its budget 18 percent, from \$118,800 last year to \$140,000 proposed for this year.

The township anticipates about \$8,000 in federal revenue sharing funds, which will be used for road maintenance and repair.

Clerk Arlene Bareis said \$17,800 of the proposed budget is contingent upon revenue sharing. The major chunk of expenditures is slated for roads (22 percent) and fire protection (26 percent).

A committee was formed at the annual meeting to study road conditions and maintenance, and the residents present discussed Concerned Citizens on Taxation,

comprised of Dexter village, and the townships of Scio, Lima, Dexter, Webster and Lodi.

### Lyndon Township

Lyndon township approved a relatively small budget increase for the upcoming fiscal year, recommending an 8.8 percent increase over last year's \$76,344 budget for a 1980 budget of \$83,057.

The supervisor's salary will remain at \$6,048, with no increase this year. The clerk and treasurer each received a seven percent increase, bringing their annual salaries to \$4,440 and \$3,960, respectively.

The township anticipates revenue sharing funds to total more than \$8,500, with \$7,776 slated for roads, \$750 to Chelsea Recreation Council and \$200 to McKune Memorial Library.

It was decided at the meeting to publish on a trial basis the agenda of upcoming board meetings in The Standard one week prior to the meeting.

### Sylvan Township

Sylvan residents defeated motions recommending salary increases for the assessor, clerk and treasurer which would fall within government inflation guidelines. Sylvan officials received no wage increases for the coming year.

The supervisor remains at \$3,000, the treasurer and clerk at \$8,000, and the assessor at \$6,000. A budget of \$205,357.13 was proposed, marking an increase of 20 percent over last year's \$171,000 figure. Part of that is a \$75,000 carry-over from last year, due to a balance on hand from the Ivey Rd. project.

A federal revenue sharing budget of \$20,000 was apportioned as follows: \$13,900 to roads; \$3,822 for the Recreation Council; \$1,258 for McKune Memorial Library; and \$1,000 to CATS.

One mill was authorized spent for operation. The following appointments were made: Peter Flintoft, attorney; Gus Stegar, auditor; Chelsea State Bank, depository of all township funds for a period of one year.

### Dexter Township

Some 20 township residents were in attendance at Saturday's meeting, which featured a 19 percent budget increase, from \$137,000 last year to \$164,000.

Major expenditures will be for road work contracts with the county.

Federal revenue sharing funds are anticipated in the amount of \$11,600, and are slated for use on road improvements.

Salaries for township officials will remain the same, with the the supervisor and assessor each receiving \$6,000 per year, and the clerk and the treasurer each earning \$5,000 annually. Trustees will continue to receive \$50 per meeting.

(Continued on page seven)

## School Board Briefs

Present at the March 31 meeting of the Chelsea Board of Education were Ann Feeney, Robert Schafer, Earl Heller, Dale Schumann, Daniel Snyder, Arthur Dils, Superintendent Van Meer, Assistant Superintendent Mills, Principals Wojcicki, Benedict, Conklin, Williams, Assistant Principal Vogel, Community Education Director Rogers, Special Education Director DeYoung, and guests.

Meeting was called to order by Vice-president Ann Feeney at 8 p.m. The Board approved the minutes of the March 17 meeting, Feeney indicated that the basic purpose of the meeting was to discuss budget alternatives in the event of millage failure.

The Citizens Committee had indicated that the board needs to tell district voters what program alterations will be in effect in the event of millage failure on April 23.

Board members reviewed several options pertaining to program reductions and solicited comments from members of the audience.

The Board approved a final package of reductions totaling \$470,500.

The Board also authorized the administration to consummate a rental agreement with the county sheriff's department which will allow a sheriff's substation to be located at the bus garage. The location will enhance police protection for district residents.

Meeting adjourned at 1:35 a.m.

Established 1871 **The Chelsea Standard** Telephone 475-1371  
 Walter P. Leonard, Editor and Publisher  
 Excellence Award By Michigan Press Association  
 1951-1952-1960-1964-1965-1966

Published every Thursday morning at 300 North Main Street, Chelsea, Mich. 48118, and second class postage paid at Chelsea, Mich., under the Act of March 3, 1979.

Subscription Rates (Payable in Advance)  
 In Michigan: Six Months \$4.50, One Year \$8.00, Single Copies \$ .25  
 Outside Michigan: Six Months \$ 5.50, One Year \$10.50, Single Copies \$ .30

MEMBER **NATIONAL PAPER ASSOCIATION** - Founded 1888  
 National Advertising Representative: MICHIGAN NEWSPAPERS, INC. 257 Michigan Ave. East Lansing, Mich. 48823

**JUST REMINISCING**  
 Items taken from the files of The Chelsea Standard

**4 Years Ago . . .**

Thursday, April 8, 1976—

Twelve members of the Chelsea High school forensics team will compete in the Regional Forensics Tournament, to be held April 27 at Ann Arbor Pioneer High school.

Chelsea Players have announced their upcoming summer musical production to be "Hello Dolly," to be presented in July.

Linda Jennings and Kim Brown of Chelsea High school will perform in an all-state high school band, known as the Revelli All-Star Band, on April 9 at Western Michigan University.

Three thousand tootsie rolls and their sellers will hit the streets this week-end, as the Chelsea Knights of Columbus and their wives sell the candy for a contribution to the mentally handicapped.

**14 Years Ago . . .**

Thursday, April 14, 1966—

Mary Jill Flintoff walked away with top honors at the District Spelling Bee in Chelsea by correctly spelling the word "abat-toir."

In response to the Chelsea School District Scholarship Committee's drive to promote education beyond high school, a scholarship of \$300 has been established by three Chelsea unions — UAW Locals 437, 1284 and 1538.

TV station WOOD of Grand Rapids is preparing a documentary on UFO's and was in Dexter on April 3 interviewing local police officers about the area's recent sightings.

Recently a fire was started in the packer truck of the village rubbish contractor, requiring the aid of the Chelsea Fire Department to extinguish the blaze. The fire started from ashes containing live coals placed on the curb by a resident.

Mrs. Joe Merkel has returned home after spending two months in Huntington Beach, Calif., visiting her daughter, Mrs. George (Monica) Gauthier. Mrs. Merkel reported that flowers were blooming and everything was green when she left the west coast.

**Howell Livestock Auction**

Starts 1 p.m. Every Monday  
 Mason 676-3400  
 The Wise Owl Sows Ship to Howell  
 Ph. (317) 546-3200 Jim Franklin

Hog Sale every Wed'y 9 a.m.

Market Report for March 31

**CATTLE**—  
 Bulk Gr.-Choice Steers, \$63 to \$65  
 Fed High Choice Steers, \$65-\$66.75  
 Gr.-Choice Heifers, \$60 to \$64  
 Fed Holstein Steers, \$56 to \$60  
 Ut.-Std., \$55 and down.

**COWS**—  
 Heifer Cows, \$48 to \$52  
 Ut.-Commercial, \$43 to \$50  
 Canner-Cutter, \$35 to \$44  
 Fat Beef Cows, \$42 to \$45

**BULLS**—  
 Heavy Bologna, \$58 to \$62  
 Light and Common, \$57 and down

**FEEDERS**—  
 400-600 lb. Good-Choice Steers, \$70 to \$80  
 600-800 lb. Good-Choice Steers, \$60 to \$70  
 200-500 lb. Good-Choice Heifers, \$65 to \$70  
 200-500 lb. Holstein Steers, \$65 to \$72  
 200-400 lb. Holstein Steers, \$55 to \$65

**CALVES**—  
 Prime, \$100 to \$110  
 Good-Choice, \$90 to \$100  
 Heavy Deacons, \$90 to \$100  
 Cull & Med., \$50 to \$80  
 Calves going back to the farm sold up to \$160

**SHEEP**—  
 Choice-Prime, \$66 to \$70  
 Good-Utility, \$44 to \$66  
 Slaughter Ewes, \$15 to \$34  
 Feeder Lambs, all weights, \$68-\$74

**HOGS (quotable)**—  
 210 to 240 lbs., No. 1, \$31 to \$32  
 200-250 lbs., No. 2, \$29 to \$30  
 Heavy Hogs, 250 lbs. up, \$28-\$34  
 Light Hogs, 100 lbs. down, \$23-\$30

**Sows (quotable)**—  
 Fancy Light, \$28 to \$29  
 300-500 lbs., \$27 to \$28  
 500 lbs. and up, \$28 to \$28.25

**Bears and Stags (quotable)**—  
 All Weights, \$28 to \$28

**Feeder Pigs**—  
 Per Head, \$17 to \$26  
 Est. 40 lb. pigs, \$20 to \$22

**HAY**—  
 1st Cutting, per bale, 40c to 85c  
 2nd Cutting, per bale, \$1.00 to \$2.25

**STRAW**—  
 Per Bale, 50c to 60c

**COWS (quotable)**—  
 Tested Dairy Cows, \$900 to \$1,300  
 Tested Beef Type Cows, \$450-\$600

★ **MICHIGAN MIRROR** ★  
 By Warren M. Hoyt, Secretary, Michigan Press Association

**House Approves Bill Requiring Auto Emissions Standards Test**  
 The House of Representatives has approved a two-bill package establishing an auto emissions testing program to meet federal clean air standards.

The bills require a motor vehicle emission test will be established by 1983 in those urban areas in Michigan not meeting the federal aid pollution standards.

The task of defining which areas will be affected, what type of test will be established and how the testing will be enforced will be left to the administrative rules process, which implements acts after their enactment by the legislature.

At stake without the bills is the possibility that the state could lose new industrial plants from General Motors and Volkswagen.

The measures require the Department of Natural Resources to determine which areas will have to undergo testing.

The actual testing procedure, along with the decision on who would conduct the tests, will be decided by the Departments of State and Transportation, jointly.

**Uncle Lew from Lima Says:**

DEAR MISTER EDITOR:

Ed Doolittle kept on keeping on during the session at the country store Saturday. He said he was worked up partly because he had been trying to work a little income tax form, but he allowed what set him off was this television report where we had spent \$120 million fixing one of them specks in the Pacific so 500 people could come back to it and live. It was a island we moved the folks off of so we could test atomic bombs in the late forties.

What we done, Ed said, we scraped a foot of soil off the island, hauled it to another island and dumped it in a hole. Then we hauled in clean dirt and planted coconuts so the folks we had run off would feel at home when they got back. As it worked out, they couldn't eat the coconuts because the roots of the trees went down to the dirty dirt and the radiation went up to the coconuts. So, Ed declared, we dumped \$120 million in a hole in the ground. That's waste of some small consideration, he allowed, but the worst is that's what everybody expected the Federal Government to do. The feller on TV said it was "the type of project Americans dearly love," which Ed called dumping money down ratholes. And Ed said it don't ease the pain none to be told the island cleanup was training fer when we have to clean up at home.

What Ed wanted to know is, if it cost \$120 million to clean a bare spot eight miles wide and 12 miles long in the middle of the ocean, what are we talking about to clean up Chicago? First we got to start cleaning up Washington, declared Republican Ed, and start taking a "lost" \$700 million in Social Security overpayments serious. Ed had saw where that much was paid out that shouldn't of been in the last six months. And overpaying has been going up since HEW started a drive three year ago to cut it out. Ed said that's the kind of cutback he sees President Carter getting from his 10 cent on the gallon increase in gasoline to fight inflation. Ed said the biggest mystery of all to him right now is how Carter can keep saying and doing stuff like that and still keep winning primaries.

Vehicle owners undergoing tests will be charged \$3 with the state subsidizing the rest of the cost.

All new vehicles will be exempt for the first year.

Vehicles found not in compliance with requirements will have to be repaired to meet minimum standards. Individuals will not have to spend more than \$75 for repairs and low income people will be exempted from the requirements of the program.

Unless the motorist's vehicle is certified as complying with the air testing requirements, it could not be registered.

Legislative leaders hope to have the bills on the governor's desk for signature by April 1.

**Lower Drinking Age, Reduced Pot Penalties Gains Support**

The administrator of the state Office of Substance Abuse Services has added his support to a proposed constitutional amendment taking the state's drinking age back to 19.

Further, he gave support for legislation to reduce penalties for use or possession of small amounts of marijuana.

**Lower Drinking Age, Reduced Pot Penalties Gains Support**

Natural, Clem Webster came to the defense of his Democrats. He wanted to know how Ed could blame inflation on Carter, but blame the whole world on Hoover's depression. He said Ed sounded like the Carter Administration invented wasteful spending, but the Nixon crowd saved money by storing \$1.2 billion worth of furniture in 78 warehouses while all the agencies kept buying more furniture.

While Clem and Ed went through their usual tantrum, Bug Hookum reminded the fellers that inflation is helping all the buy-low, sell-high boys. We got the chemics in our bodies fer free, Bug said, and they have gone up nearly 650 percent in the past 10 years. Somebody figured out that our iron, calcium and the rest that went fer 98 cents in 1970 is worth \$7.28 now. If you figger the market price of all our replacements parts and blood, Bug said we're walking around with a \$3 million investment. Even so, Bug said he ain't looking fer a rush on the market.

Yours truly,  
 Uncle Lew.

Kenneth Eaton made the remarks in connection with the agency's annual evaluation report which showed 78,000 residents receiving treatment or case-finding services with about half of those being unemployed.

Eaton said Michigan will never find a magical legal drinking age that will solve alcohol abuse problems among young people and added it was not realistic to expect law enforcement alone to curtail a custom that is widespread older adults.

He said he would not actively support the petition drive to place a 19-year-old age proposal on the ballot, but did say the issue should be dealt with.

He added it was reasonable to consider the civil rights issues in denying adults the privilege of drinking alcohol until age 21.

Eaton maintained, however, that alcohol abuse throughout society must be responsibly addressed.

He further said he supports lowered penalties for marijuana possession and use because most people do not want to see young persons in jail for engaging in such behavior.

He concluded he supports legislation to provide for the referral of marijuana offenders to treatment and prevention programs and to provide increased resources for ongoing research into marijuana use.

**Horseless Carriage Big Hit at Big Top**

The main attraction at the April 2, 1896 opening of the Barnum & Bailey Circus was neither the elephants nor the aerial acts. Instead of shiny new 1896 Duryea Motor Wagon, a newfangled horseless carriage, led the impressive parade. The only surviving 1896 Duryea is now on exhibit at Henry Ford Museum, Dearborn.

**GOOD FRIDAY HOURS**

The University of Michigan Family Practice Center will be closed Good Friday, April 4, 1980, from 12:30 p.m. until 3:00 p.m. There will be a physician on call, as usual, to take care of emergencies. The telephone number to call is 475-1321.

**Hoffman Tire & Service**  
 7 miles west of Chelsea  
 13660 E. Michigan  
 Grass Lake 522-8542  
**Delta**  
 THE SIGN OF QUALITY TIRES  
**CERTIFIED IN TUNE UPS & ENGINE REPAIR**

**OPEN SUNDAYS**  
 10 a.m. to 2 p.m.  
**MAIN STORE ONLY**  
 1414 S. MAIN ST., CHELSEA  
 Phone 475-9106  
**The PARTS PEDDLER**  
 AUTO SUPPLY STORES  
 The Friendly Place to Buy Auto Parts

**BRIDGEWATER HARDWOODS**  
 12 Species - Kiln Dried  
 Random-width Flooring - Paneling - Fireplace Mantles  
**Ph. 429-1005**

**Only Chrysler-Plymouth pays you to compare.**

**TEST DRIVE \$50**  
 THE NEW CHRYSLER CORPORATION

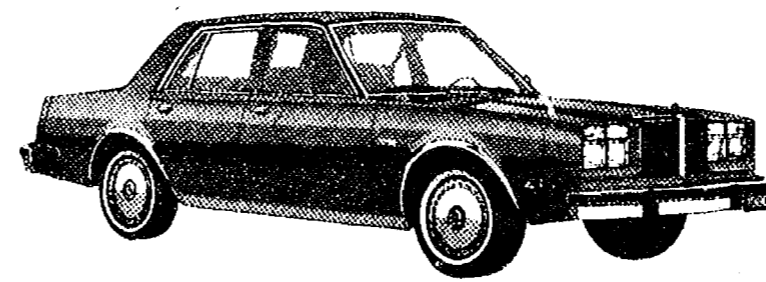
If you buy theirs.

Test drive one of our new 1980 cars at a participating dealer. Then test drive the competition. If you buy or lease a qualifying new 1980 car from one of our competitors within 30 days, the \$50 is yours. Just bring back the test drive certificate with proof of purchase or lease.

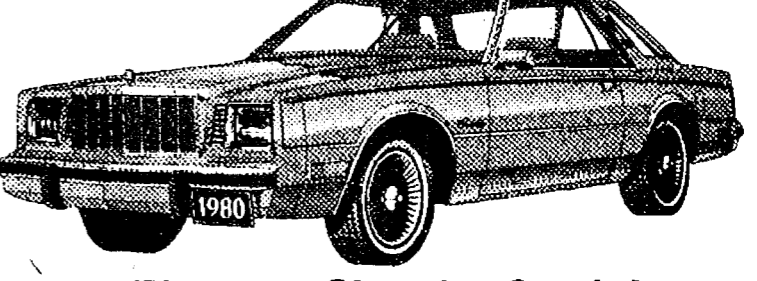
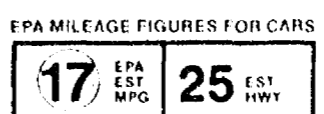
**TEST DRIVE \$500**  
 THE NEW CHRYSLER CORPORATION

If you buy ours.

Buy or lease a new 1980 Chrysler Cordoba or LeBaron for personal use. The New Chrysler Corporation gives you a check that turns the \$50 into \$500. Hurry. It's a limited-time offer. Get a test, get a car. Get \$500.



The new Chrysler LeBaron. 38 out of 50 who compared it to the Olds Cutlass rated LeBaron superior overall. Based on a survey by the Nationwide Consumer Testing Institute, Inc., February 9-10, 1980, 38 out of 50 people who compared the 1980 Chrysler LeBaron Medallion 4-door to the 1980 Oldsmobile Cutlass Supreme Brougham rated the LeBaron superior overall. Compare LeBaron to Olds Cutlass and Buick Century yourself. We believe that you, too, will give LeBaron a top rating.



The new Chrysler Cordoba. More fuel-efficient\* but as luxurious and sophisticated as ever. To improve fuel efficiency, The New Chrysler Corporation engineered the new Cordoba to be over 400 pounds lighter than the 1979. Overall length was also scaled down, while actually increasing Cordoba's front and rear leg room.\*\* Traditional Cordoba luxury, prestige and comfort? That remains unchanged.

\*According to EPA Interior Volume Index.  
 \*\*Improved Cordoba mileage based on comparison of standard engines. Use the EPA est. mpg figure for comparison. Your mileage may vary depending on your speed, distance and weather conditions. Actual highway mileage will probably be less. California estimates lower.

**TO TOP IT ALL, YOU GET THE CHRYSLER GUARANTEES!**  
 See your participating dealer for full details. (These New Chrysler Corporation commitments apply to new 1980 vehicles for personal use only.)

**Get a test. Get a car. Get \$500. It pays to compare!**  
**SEE US NOW.**  
**WE'RE YOUR PARTICIPATING DEALER.**

**CHRYSLER STOP WORRY PLYMOUTH**  
**VILLAGE MOTOR SALES, INC.**  
 1185 MANCHESTER ROAD  
 CHELSEA, MICHIGAN

**EASTER HAMS**

Made the old-fashioned way,  
 Hickory Smoked and Cured

**98c lb.**

- Also -

**We Make Easter Sausage**

Plus, A Full Variety of  
 Easter Meats.

**DUNBAR'S DEXTER LOCKER**

8083 Main St., Dexter  
 426-8466

## Child Study Club Members Receive Home Decorating Ideas

Twenty members of the Chelsea Child Study Club met at the home of Wyn Schumann on Feb. 28 to hear Dr. Joel Saper of the Michigan Neurology and headache clinic. Dr. Saper discussed this most common complaint and outlined some modern methods of diagnosing and treating headaches in both adults and children.

June Flanigan was introduced as a new member and welcomed by President Neta Mills with a traditional flower. The members of the club have started a new tradition, honoring a member for her interests and accomplishments at each meeting.

Barb Branch, auditor-parliamentarian, introduced the first honoree, Wyn Schumann, who has been a member for four years.

Hostesses for the evening were Kay Redding and Roberta Cobb.

Easter decorating began on March 11 when the club members met at Beach Middle school to see Carol Sauter demonstrate Ukrainian Easter egg design.

Twenty members and guests Jean Cooper, Maggie Kemler, Judy Parker, Carol Collins and Cathy Freysinger participated by coloring their own eggs with special dyes and wax.

Marian Sprague, finance chairman, reported that the proceeds of the Culinary Collection series

resulted in a \$317.32 donation to Spaulding for Children.

Nominating committee members Kay Redding, Nancy Grau and Mary Jo Miller announced that the candidates for 1980-81 are Barb Branch, vice-president; Roberta Cobb, secretary; Marti Neumeyer, treasurer; and Louise Likavec, auditor-parliamentarian.

President Neta Mills, Betty Cox and Barb Branch will be attending Michigan Child Study Club spring planning. They will be presenting a state syllabus prepared by Anne Steinaway on the past successful Christmas bazaars.

Ellie Giffin specially honored Mary Jo Miller as club member of the month. Hostesses for the evening were Camie Noah, Betty Cox and Gari Feldman.

The March 25 meeting was a decorating panel at Merkel's of Chelsea. Guests Ann Feeney, Judina Brunner, Cindy Giffin and Beth Branch joined members in learning the latest ideas in carpeting and wallpaper.

Questions about home decorating were answered by Robert Merkel and Craig Thurkow. Hostesses for the evening were Louise Likavec and Anne Steinaway.

Telephone your club news to 475-1371



HELEN MEZZARESE knows all about good nutrition, but somehow those radishes look less appetizing than a juicy cheeseburger. Helen, other Chelsea Hospital Day Care Center children

and a number of parents enjoyed a healthful lunch at the hospital dining room last Friday. The lunch was preceded by a week of nutrition education from dietician Pat Asp.

### Modern Mothers Hold Meeting at Methodist Home

Modern Mothers Child Study Club spent a social evening with the residents of the Chelsea Methodist Home Tuesday, March 25. Refreshments were served early while club members enjoyed the time together.

The club then performed "Just Reminiscing - An Old-Fashioned Sing-Along," which is a short musical beginning at the turn of the century and touches upon significant events especially memorable to the Methodist Home residents.

Sheri Plank performed "Somewhere Over the Rainbow" on the flute and Alison Chastain played "The Entertainer" on the piano. Other members had special roles, such as reading, singing and dancing the Charleston.

Pianist for the evening was Lavone Harris.

A meeting was held after the musical. Progress reports were given by the various committees for the club's up-coming event, Chelsea's Challenge, which is a running race to be held May 10. Runners will begin the race at 10 a.m. that morning at Chelsea High school.

Liz Prentis gave the details of the club's Easter party.

Phyllis Tillman read biographies of candidates for the Girls State program. The club chose to sponsor Chris Kvarnberg, with Elaine Meyer chosen as an alternate.

The evening closed with guest speaker Fred Mills, who was invited by the club to explain the importance of millage increase.

The next meeting is April 22, and will feature a tour of the Mott Children's Hospital in Ann Arbor.

### Bert Hinz Named Chairman for Scout Cookie Sale

Bert Hinz, 262 Harrison St., has been named Area Cookie Chairman for the 1980 Huron Valley Girl Scout Council's annual cookie sale.

Hinz is among some 40 persons appointed by council cookie sale chairman, Anita Apley of Ann Arbor. As part of her responsibilities, she is helping to organize and conduct the sale in this area by co-ordinating troop efforts.

Goal for this year's sale, which ran through March 25, was to sell 550,000 boxes. If this goal is reached, it will mean a Girl Scout profit of \$517,138. Of this money, \$137,638 will go for direct troop program costs.

The remaining funds will go to the council to ensure a standard of high quality programs available to Scouts throughout the council area, which includes all of Washtenaw and Livingston counties, as well as southern Wayne and northern Monroe counties.

Order taking ended March 25. Deliveries will begin April 14 and end April 30.

### GIRL SCOUTS

**TROOP 247-**  
Brownie Troop 247 met Tuesday, April 1. We made Easter bird nests from donuts, coconut, jellybeans and chicks.

We played a game called "Midnight."

Melissa Fletcher brought treats.

We shared about Easter. Sharon White, scribe.

**TROOP 82-**  
Junior Troop 82 has been making favors in preparation for their mother-daughter tea.

Tami Harris, scribe.

Advertising revenue pays the costs of news gathering, photos and production of The Standard. Let your friendly home-town merchant know you appreciate it.

Please Notify Us In Advance of Any Change in Address

### Trinity Lutheran Ladies Guild Will Elect Officers

The Ladies Guild of the Trinity Lutheran church of Pinckney will hold officer elections Thursday, April 10 at 7:30 p.m. All interested women of the church are invited. Refreshments will follow.

This will begin the second year of organization for the Ladies Guild. This past year, the women's group raised money for the new church building fund by bake sales and a rummage sale. They just completed a successful paper drive with proceeds being used for the new church kitchen. The women have also provided refreshments for various church functions.

The guild's purpose is to represent Christian fellowship by means of community activities, church service and evangelism.

### Schools To Close On Good Friday

Chelsea schools will dismiss classes at 11:30 a.m. on Good Friday, April 4. School will resume for students on Monday, April 14.

### Huron Valley Electrolysis Associates

The only medically approved permanent hair removal process.

free consultation • hours by appointment

Carolyn Blecha, Anne Mininberg  
Licensed Electrologists

663-9915  
971-5225

**photo depot**  
107 1/2 SOUTH MAIN ST.  
CHELSEA, MICH. 48118  
(313) 475-1687

## Beautiful Wedding Photography

by Vernon Otto

This special offer is good for February through June Wedding Pictures!

**The Best Deal in Town!**

(72 poses to choose from)

- 1—Bride & Groom's package of 18 - 8x10's, including album.
- 2—Parent 4x5 albums, which include 12 - 4x5's each.
- 3—11x14 FREE PORTRAIT

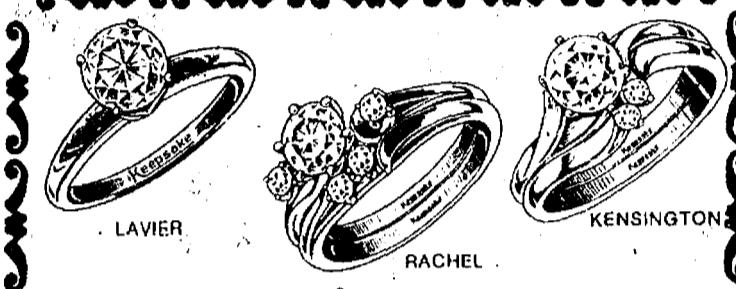
**All now for ONLY**

Reg. \$344.00      **\$249.50**

**Save \$94.50**

Book your wedding now—  
Limited dates open on schedule.

The perfect way to show your love...



A Keepsake diamond engagement ring is the perfect way to show your love.

Keepsake guarantees each center diamond for fine white color, perfect clarity and correct modern cut.

Keepsake. When it's for keeps.

**Keepsake**  
Registered Diamond Rings

## Winans Jewelry

## Spring Has Arrived at VOGEL'S



We Have A Large and Beautiful Selection of

Blouses - Slacks - Dresses  
Casual Tops - Shorts

All the new colors and comfortable fabrics.

SIZES 8-18, 38-46

## Vogel's & Foster's

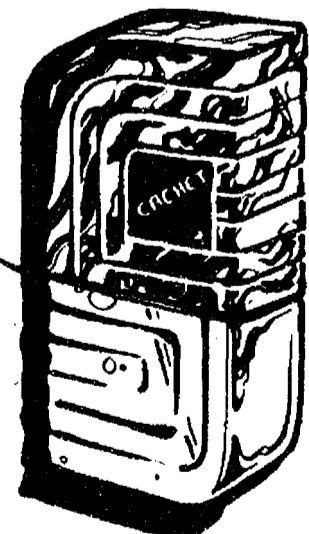
### CAROL'S CUTS

40 CHESTNUT

Monday, Wednesday and Friday  
**475-7094**

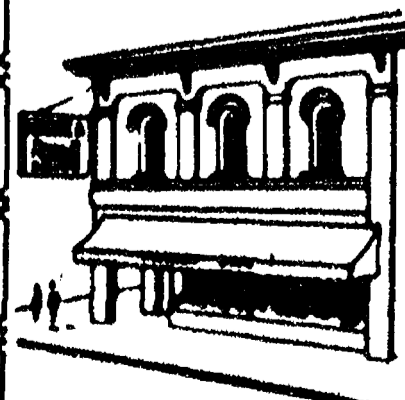
Appts. Only  
9:30 a.m. - 3:00 p.m.

## CACHET as individual as you are



TOUCH-UP COLOGNE  
SPRAY MIST \$4.50

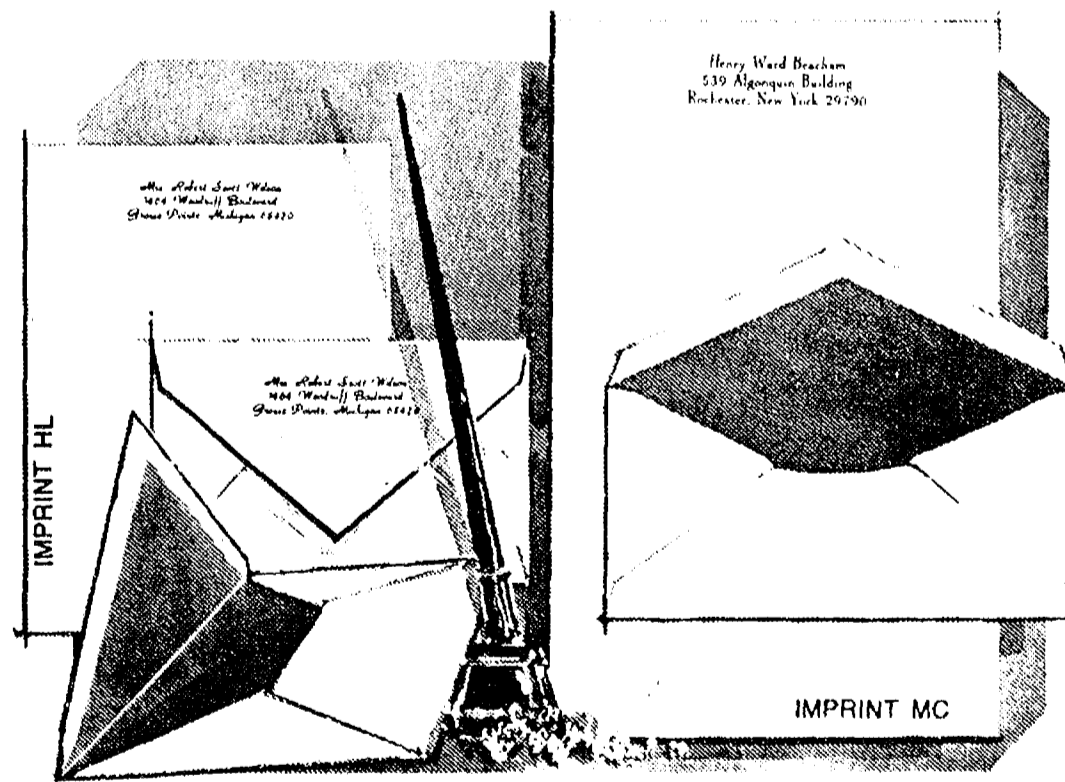
PRINCE MATCHABELLI



**Chelsea Pharmacy, Inc.**

101 N. Main—Chelsea  
475-9103

## The Chelsea Standard



April 1/2 Price Sale... regularly \$18, Now **\$8.95**  
Rytex Laidmark Vellum Stationery

THE CHELSEA STANDARD  
300 N. MAIN ST., CHELSEA, MICH. 48118

Send \_\_\_\_\_ boxes LAIDMARK VELLUM @ \$8.95 each  
Include Bonus:  (check) 50 extra plain sheets at \$3.00 each box

Imprint Name \_\_\_\_\_

Street \_\_\_\_\_

City \_\_\_\_\_

State, Zip \_\_\_\_\_

Choice of Paper Size:  
 Princess (6200)  Monarch (6400)

Imprint Choice in blue ink.  HL  MC

ORDERED BY \_\_\_\_\_

Street \_\_\_\_\_ Apt. \_\_\_\_\_

City, State, Zip \_\_\_\_\_

Account No. \_\_\_\_\_ Phone \_\_\_\_\_

Charge  Payment enclosed. Sorry, no C.O.D.'s

Crisp white laidmark letter-sheets with matching blue-lined envelopes. Your imprint, in choice of styles shown, matches the blue envelope lining. Select Princess (5 3/4 x 7 3/4) or Monarch (7 1/4 x 10 3/4) size. Gift boxed, 100 Princess sheets and 100 matching envelopes or, 80 Monarch sheets and 80 matching envelopes.

**Special Bonus:**  
50 extra, unprinted sheets for use as second pages... only \$3 with order.



**VISIT WITH CONGRESSMAN:** Diane Horning, left, of Manchester and Mary Weidmayer, right, of Ann Arbor, legislative leaders for Washtenaw County Farm Bureau, visited with Congressman Bob Carr (D-6th District), center, during a breakfast meeting with Michigan's congressmen and senators in Washington, D. C. The meeting was part of a four-day seminar, March 24-27, during which Michigan farmers discussed issues of concern with their elected represen-

tatives and government officials in the nation's capitol. Horning and Weidmayer were two of 125 Michigan farmers who participated in the 20th annual Washington Legislative Seminar, sponsored by the Michigan Farm Bureau Women's Committee. Key issues discussed during the Washington visit included inflation and the need for a balanced federal budget, and the Soviet grain embargo and its effect on farmers.

**Manchester Farmer Honored for 35 Years MMPA Membership**

Manchester resident Gaita Cathey is among 22 dairy farmers who were honored last week for belonging to the Michigan Milk Producers Association (MMPA) for at least 35 years.

**School Superintendent Meets With Citizens**

In an effort to improve communications with school district residents, Chelsea school Superintendent Ray Van Meer has initiated a program entitled "Dialogue with the Superinten-

dent." This program, which began in October 1979, gives residents a chance to discuss school operations with the head administrator.

Dialogue meets the first Thursday of each month at 9:30 a.m. Persons who have attended sessions in the past are parents who have children in the schools, but there is a desire to enlarge membership to include non-parents and senior citizen representatives.

The monthly sessions are scheduled in each of the district's schools. Those attending then have an opportunity to view a portion of the school day at a particular school.

Dialogue was created, said Van Meer, to give the superintendent the opportunity to hear concerns about the schools and to share the operations of the schools with interested parties.

Some evening meetings may be scheduled in the near future.

Next slated meetings are April 3 at North school, May 1 at South school and June 5 at Chelsea High, all at 9:30 a.m.

You can conduct most all of your social security business on the telephone. Look in your directory for the number.

If you are housebound or hospitalized, you can arrange to have social security a representative visit you.

Call your social security office before you make a visit. You may save yourself a trip.

**Easter Worship**

(Continued from page one)

The children's choir will sing at the 10:30 service.

North Lake United Methodist church on North Territorial will have a Seder meal at 6:30 p.m. Thursday. Church members may participate in the community service at St. Paul's church on Friday at 1 p.m. Easter Sunday begins at 7 a.m. with a sunrise service, followed by breakfast at 8 a.m. and an Easter egg hunt at 9 a.m. Worship with the theme "Hallelujah, What a Savior."

Immanuel Bible church on E. Summit St. will present an Easter cantata at 7 p.m. Easter Sunday. Sunday morning worship will follow the regular schedule.

St. Paul's United Church of Christ, Old US-12, will hold a Communion service on Maundy Thursday at 7:30 p.m. Good Friday, St. Paul's will host the Chelsea Ministerial Association Community service, with the Rev. Marvin McCallum and the Rev. William Donald, preachers. Carolyn Donald will be the organist.

Easter Sunday will begin with a 6:30 a.m. sunrise service, featuring music from Handel's "Messiah." An Easter breakfast will follow at 7:30 a.m. with Festival Worship and Communion at 10:30 a.m.

Chelsea Baptist church, Wilkenson St., will have sunrise service on Easter at 8 a.m., followed by a 9 a.m. breakfast served by the men of the church. A special service will be held at 10 a.m., with recitations by children and scripture reading. An evening service with the theme "Resurrection Power Within" will be celebrated at 8 p.m.

St. Barnabas Episcopal church, Old US-12, will observe Maundy Thursday with a 7:30 p.m. Communion service, followed by laying bare the altar. Good Friday worship will be from 12 noon to 3 p.m. and Easter service will be held at 10 a.m. Sunday.

Salem Grove church will hold a Maundy Thursday Communion service at 7:30 p.m. Sunday, an Easter sunrise service at 7:30 a.m. will be followed by an 8:15 a.m. breakfast and 9:30 youth and Sunday school. At 10:30 a.m.,

an Easter service featuring Baptism and reception of a new member will be celebrated. Theme of the sermon will be "The Easter Tidings."

Covenant church will observe Easter with a 7 a.m. service followed by a fellowship breakfast at the Knights of Columbus Hall.

First Assembly of God, Old US-12, will hold sunrise worship on Easter at 7 a.m., with breakfast following. Reservations for breakfast may be made by calling 475-2615 or 475-8809 by Friday. Sunday school for the whole family will be held at 9:45 a.m. and worship services are scheduled for 11 a.m. and 6 p.m.

St. John Evangelical and Reformed church, Francisco, will hold a 7:30 p.m. service on Maundy Thursday. An Easter breakfast will be held Sunday at 9 a.m. followed by worship with Communion at 10:30.



A son, Matthew Martin, Sunday, March 23, to Tom and Debbie Kennedy, 18225 Cavanaugh Lake Rd. Maternal grandparents are Mr. and Mrs. Donald Walker of Mt. Vernon, Ky. Paternal grandparents are Mrs. Marcella Kennedy of Zephyr Hills, Fla., and the late John R. Kennedy.

A daughter, Melissa Nicole, Wednesday, March 26, the second child of Paul and Lorraine Herrst, 610 Oakdale, Chelsea. Paternal grandmother is Mary Arthur Herrst of Manchester. Mr. and Mrs. Henry Schwab of Detroit are maternal grandparents.

A daughter, Christine Elizabeth, Friday, March 28, to Debra and Mark Winters of Ann Arbor. Maternal grandparents are Mr. and Mrs. Gerald Duffey of Chelsea. Mr. and Mrs. Douglas Winters of Ann Arbor are paternal grandparents.

Subscribe today to The Standard.

**KITCHEN REMODELING**

- ★ We at Dutch Country are kitchen remodeling specialists.
- ★ Expert installation available.
- ★ Free design layout service.

Featuring: **HAND CRAFTED AMISH CABINETS.**  
 ★ Distinctive "GOLDEN OAK CABINETS" By Continental.  
 ★ Jenn-Air Appliances ★ Delta Faucets ★ Elkay & Kohler Sinks.

VISIT OUR SHOWROOM  
**DUTCH COUNTRY KITCHENS**  
 146 E. Main 428-7292 Manchester

**WINDOW SHADE SALE**

During April our stock window shades in room dimming and room darkening will be

**20% Off Our Reg. Prices**

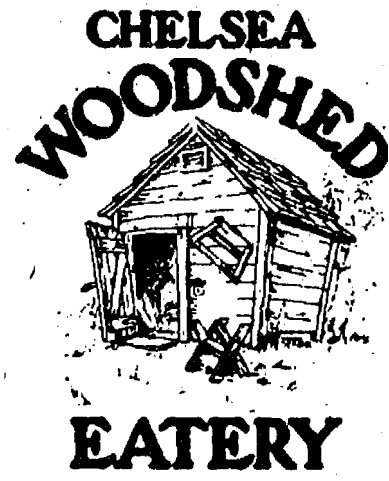
**MERKEL Home Furnishings**

**RIVENDELL HAS NATURAL TREAT BASKETS READY FOR EASTER MORNING!**

**\$1.65 - \$2.75**

Guernsey Dairy Milk - Brown Eggs

**RIVENDELL NATURAL FOODS**  
 3212 ALPINE DEXTER, MICH 48130  
 426-2549  
 (Across from the Farmers' Market)



**WAKE UP WITH US!**

With the closing of The Chelsea Restaurant, after years of fine service, where do you eat breakfast downtown?

At The Chelsea Woodshed, of course! Beginning on Monday, February 11th we will be serving a full breakfast menu. In addition to our fine lunches and dinners, you can now wake up with The Chelsea Woodshed too!

Breakfast served from 7 a.m. until 11 a.m. Monday through Saturday. Closed Sunday.  
 113 S. Main Chelsea, Michigan  
 Call 475-1922



**We Have the Garden Supplies For Spring Lawn & Garden Care**

- DORMANT SPRAYS - PRUNING PAINT - HAND TOOLS
- RAKES - SHOVELS - BULK GRASS SEED - GARDEN SEEDS
- FLOWER BULBS - ONION SETS - PEAT MOSS
- SPECIALTY FERTILIZERS

**SUPER SALE PRICES ON ORTHO LAWN FOOD**

- 5,000 sq. ft. bag LAWN FOOD Save \$2.60. NOW **\$6.38**
- 10,000 s. ft. bag LAWN FOOD Save \$5.11. NOW **\$12.38**
- PRE-EMERGENCE CRABGRASS CONTROL Save \$6.40. NOW **\$16.58**

- ROTARY SPREADERS \$29.98**
- DROP SPREADERS \$27.98**

**Special Prices on POWER EQUIPMENT**

- Buy Now and Save on
- TRACTORS - TILLERS - RIDING MOWERS**
  - POWER MOWERS**
  - SIMPLICITY - ARIENS - LAWNBOY - ATLAS

We Trade - Service - Recondition

**CHELSEA HARDWARE**

110 S. Main St. Ph. 475-1121

**SPRING WALLCOVERINGS SALE**

**SAVE 30%**

Spruce up a room at super savings now! Choose from an exciting selection of quality papers on sale for a limited time only. Charming traditional and smart contemporary patterns. Pre-pasted, vinyl, mylar and more. But hurry! Sale ends April 19.

SELECT FROM BOOKS BY  
 THOMAS STRAHAN, JAMES SEEMAN, INALTERA AND HATEMA



HOME FURNISHINGS  
 Open Mon., Wed. and Fri. Until 9 p.m.  
 Phone Chelsea 475-8621

### Area Students Cited at U-M

Some 4,000 University of Michigan students were recognized for scholastic achievement at the university's annual Honors Convocation March 28.

A large number of area students were among those receiving the honor.

Chelseaites receiving recognition included Albert F. Anderson, III, 14889 Waldo Rd.; Dennis D. Bauer, 19917 Waterloo Rd.; Kimberly A. Brown, 20098 Brown Dr.; Carolyn B. Clancy, 671 W. Middle; Jeffrey J. Kiel, 21520

Waterloo Rd.; and David W. Pletcher, III, 991 Ridge Rd.

Dexter students honored were Gall C. Christian, 7982 Dexter-Pinckney Rd.; Elizabeth M. Greenway, 2141 Steinbach; and Manya A. Pastalan, 8143 Huron River Dr.

Bruce H. Becker, 20338 Kaiser Rd., Gregory, was honored for receiving all A's for two or more consecutive terms.

A reception and tea for students and their families was held following the convocation.



A GREEN DRAGON gets the finishing touch from Casey Anderson, left, as other North school students spruce up their art projects. Art work of the group, from left, Anderson, Linda Estey, Wendy Hunn, Mark Pletcher, Chris Rainey, Jason Crombez, Matt Selwa and Drew Hubal, will be presented at the Manchester Art

Guild show, "Through A Child's Eyes." The exhibition will feature the artwork of area youngsters beginning Sunday, April 13 and running through April 27. Teacher Pat Henkel said that the student art will be on sale. The guild is located above the Black Sheep Theatre on Manchester's Main St.

### B. Pearson Appearing In Concert

Chelsea native Byron Pearson, currently an assistant professor of trumpet at Oberlin Conservatory of Music, will join with organist Arthur Vidrich in presenting a concert of music for trumpet and organ Thursday, April 10.

Music of Charpentier, Albinoni, Bach, Schilling, Molter, Brahms, Vienne, Jenkins and Langlais will be performed at the 8 p.m. recital, to be held at St. Andrew's Episcopal church, 306 N. Division, Ann Arbor.

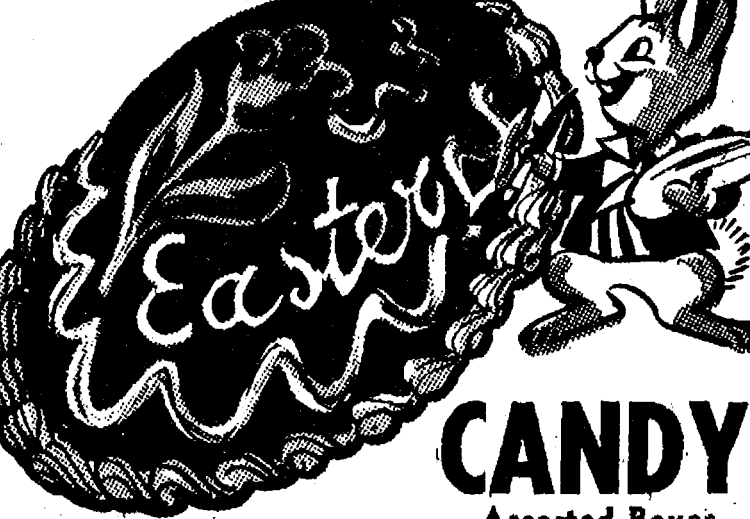
Pearson was acting principal trumpet of the Baltimore Symphony Orchestra for the 1978-79 season. He has also been a member of the trumpet sections in both the New Orleans Philharmonic and St. Louis Symphony Orchestra, and was a featured soloist with the United States Marine Band in Washington, D.C.

Pearson received his bachelor's and master's degrees from the University of Michigan and is currently enrolled in a doctoral program there.

Pearson and organist Vidrich have a recently released recording of trumpet and organ music on the Crystal Records label, which is available for sale at their performances.

Please Notify Us of Any Change in Address

## Sanders



**CANDY**  
Assorted Boxes

- ★ HAND PAINTED EGGS
- ★ IMPORTED WOODEN EASTER ORNAMENTS
- ★ IMPORTED WICKER BASKETS - Nice for Easter

WOOD & ANTIQUE PICTURE FRAMES

**1/2 Off**

ALL LARGE STUFFED ANIMALS \$20 and up  
**25% OFF**

*Dayspring Gifts*  
116 S. Main Ph. 475-7501

### Willard Johnson Representing Wooster College

Willard Johnson, 14410 Stoffer Ct., hospital administrator at Chelsea Community Hospital, is currently serving as an alumni-admissions representative for the College of Wooster, a private liberal arts college in Wooster, O.

Johnson, a Wooster graduate, has volunteered to talk with high school students at Greenhills School and Chelsea, Dexter and Brighton High schools who may be interested in learning more about Wooster.

He is one of more than 600 Wooster alumni volunteers throughout the country working with high school students.

A four-year residential college, Wooster is located 50 miles south of Cleveland.

### Kim Guyor To Skate in Ice Carvalnal

Chelsea resident Kim Guyor will join other members of the Ann Arbor Figure Skating Club in presenting their 38th annual carnival, Melody on Ice.

The show will be presented April 18 and 19, 7:30 p.m., and April 20, 2:30 p.m., at Veteran's Ice Arena.

Club members will perform nine solos in the show, which also features a number of nationally-ranked singles and pairs skaters.

Advance tickets are \$2 and are available from club members or various Ann Arbor locations, including Hudson's.

### Kiwanis Flower Sale, Microwave Cooking Demo Scheduled

Annual Easter Flower Sale, sponsored by the Chelsea Kiwanis Club, will take place Friday and Saturday, April 4 and 5 at Heydlauff's, 113 N. Main St.

In addition, a microwave cooking demonstration will be given at Heydlauff's by local home economist Lenore Mattoff. From 10 a.m. to 2 p.m. Saturday, she will demonstrate and answer any questions about microwave cooking.

Free coffee and snacks will be served.

Advertising revenue pays the costs of news gathering, photos and production of The Standard. Let your friendly home-town merchant know you appreciate it.

Tonight and Every Thursday:  
**THE CAPTAINS TABLE ROAST BEEF BUFFET**

VISA  
Master Charge

NOW SERVING COCKTAILS IN OUR NEW BAR

*"Carved Before Your Eyes"*  
Serving from 4:30-9:30 p.m.

**The Captains Table - 8093 Main St., Dexter**  
Thursday, Friday, Saturday open till 7

TO YOU... THE JOYS OF Easter

OPEN 7 DAYS A WEEK

# Jiffy market

Big Enough To

Serve You... Small Enough To Know You!

COMPLETE SUPER MARKET LIQUOR

Open All Day EASTER Full Line All Easter Foods

Store Hours - 7 a.m. to 10 p.m. 7 Days A Week

Jiffy Market - Marathon Gas Pumps

CORNER OF SIBLEY & WERKNER RDS. . . CHELSEA, MICH.

PHONE 475-1701

HOURS: 7 a.m. to 10 p.m. Daily 7 DAYS A WEEK

WE ACCEPT U.S.D.A. FOOD STAMPS

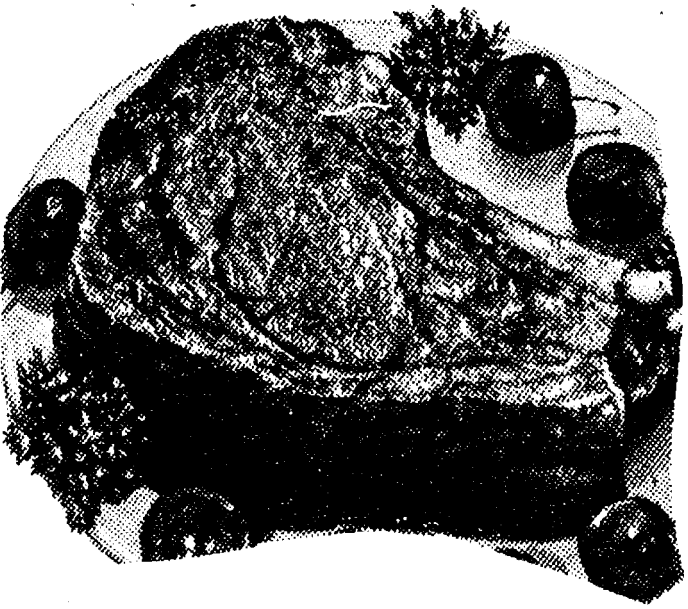
SALE PRICES EFFECTIVE

Thurs., April 3 thru Sun., April 6

Store Hours - 7 a.m. to 10 p.m. 7 Days A Week

Jiffy Market - Marathon Gas Pumps

## U.S.D.A. CHOICE BEEF STANDING RIB ROAST



LARGER END \$1.98  
5, 6, 7 RIB, lb.

FIRST CUT \$2.19  
1, 2, 3, 4 RIB .lb.

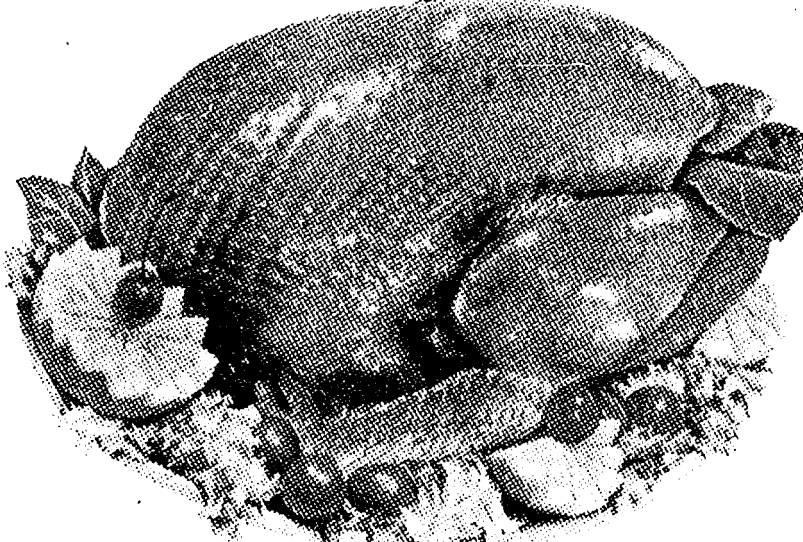
FOR EASTER

Serve the Finest U.S.D.A. CHOICE GRADED BEEF

Need A Special Cut For Easter?

Call Ahead - 475-1701

## TURKEY for EASTER



**TURKEY**  
U. S. GOVERNMENT INSPECTED GRADE A

**79c**  
lb.

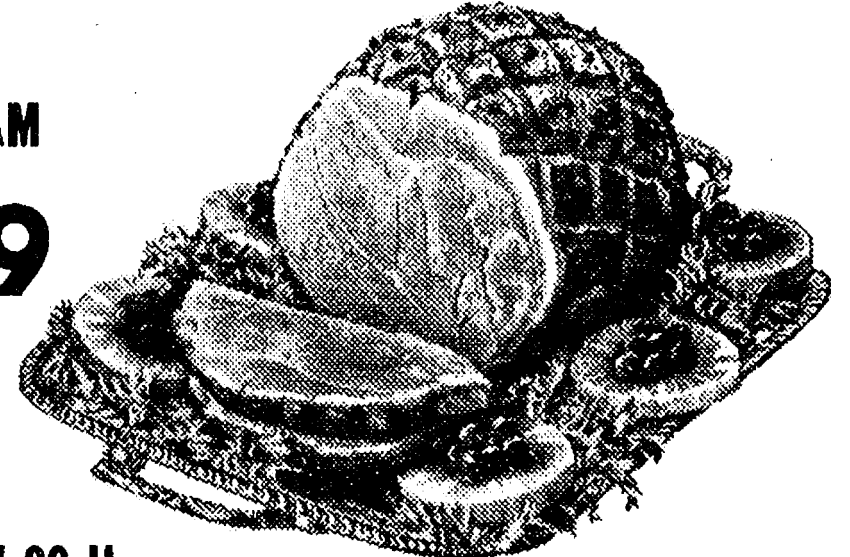
12 to 16 lbs.

## FARMER PEET BONANZA

# HAM FOR EASTER

WHOLE HAM

**\$1.79**  
lb.



HALF HAM - \$1.89 lb.

BONELESS - COOKED  
DE-FATTED - SMOKED

FOR EASTER  
SERVE THE BEST!!!

Farmer Peet Re-Peeter  
**SLICED BACON**  
1-Lb. Pkg. \$1.29

Young, Tender, Sliced  
**BEEF LIVER**  
89c lb.

HCLSUM  
Brown & Serve  
**ROLLS**  
12-Count Pkgs. 99c

Wesley's Quaker Maid  
THE FINEST QUALITY  
**ICE CREAM**

1/2 gal. \$1.69

Neapolitan Strawberry Heavenly Cherry Black Cherry Chocolate Marshmallow Chocolate Chip

Vanilla French Vanilla Fudge Vanilla Butter Pecan Black Walnut

ICE CREAM for Easter 1/2 gal. \$1.69

CALIFORNIA  
**HEAD LETTUCE**  
Large Head 59c

FARM MAID FRESH  
**ORANGE JUICE**  
1/2 gal. 99c

Colby Longhorn  
**BULK CHEESE**  
\$1.59 lb.

Farm Maid  
Homogenized  
**MILK**  
Gal. Crtn. or Plastic \$1.89

FARM MAID  
**LOW-FAT MILK**  
gal. \$1.59

**COTTAGE CHEESE**  
1-Lb. Crtn. 79c

OLD FASHION  
**VERNOR'S Ginger-Ale**  
Regular or Diet  
3 1 Liter 1 Qt., 18-Oz. Bottles \$1 (plus deposit)

**MARATHON GAS**  
REGULAR  
See You at Church on Easter  
INCLUDES ALL TAXES  
**OPEN ALL DAY EASTER**

**JIFFY MARATHON PUMPS**  
Save on Top Quality Gas!

Gas Pumps & Store Open 7 a.m. to 10 p.m. 7 Days A Week - U.S. Authorized Food Stamp Store - Daily & Sunday Papers

# BEACH MIDDLE SCHOOL HONOR ROLL

**2nd Semester 3rd Marking Period**

**6th GRADE —**  
Robert Abdon, Christine Akin, Ty Anderson, Daniel Bellus, Raechel Bery, Jacqueline Boosey, Angela Brand, Donna Bruck, Thomas Brugh, Catherine Burkel, Gary Callison, Nancy Case, Jennifer Cattell, Kimberly Clouse, Kimberly Collins (all A), Paula Colombo (all A), Jennifer Colvin, James Cook, Laura Damm, Christina DeFant, Daniel Degener, David Dresselhouse, James Eisenbeiser, Robert England, Christie Favers (all A), Andrew Fenton, Kelly Fletcher, Karen Forrester, Karen Foster, Mark Freitas, Laura Goderis, Heather Grenier, Tracy Guard, Melanie Gunn.

Mari Haapala (all A), Tracie Harook, Sommer Havens, Kristi Headrick, Laura Heeter, Chris Herter, Chandra Hurd, Peter Janik, Douglas Jankuski, Susan Jaques, David Jensen, Melissa Keiser, Jackie Kelly, Karen Killelea, Matthew Koentz, Martha Koernke, Josephine Krzeckowski, Paula Kuzon, Cindy Kvarnberg (all A), Jeffrey Larson, Lisa Lewis, Jennifer Lindsay, Tammy Lisznyai, Kenneth Martin, Tracy Martin, Kristina Mattoff, Kevin Maynard, Audra McClear, Mark Mull, Robert Murrell.

Laura Nix (all A), Susan Overdorf, Dianna Parker, Charles Peiter, Crystal Porath, Cynthia Poulter, Thomas Pryor, Shawn Quilter, Brian Robeson, Scott Rowe, Scott Salyer, Jill Schaffner, Chris Schlupe (all A), Sonya Steele, Devon Thomas, David Thompson, Julie Thompson, Robert Torres, Mark Westhoven, Steven Whitesall, Dawn Zaineb.

**7th GRADE —**  
Brian Ackley, Laura Anderson, Brent Bauer, Gayla Bauer, Mark P. Bentley, Debbie Bolanowski, Charles Boonum, Shane Brown, Marie Bulick (all A), Michael Carignan, Michael Coffman, Amy Depping, Brian Farley, Daniel Fenton, Rebecca Finch (all A), Lori Folcik, Carol Gerstler, Matthew Grau, Kevin

Gross, Anthony Hamerschmidt, Kimberly Harden, Kelly Hawker (all A), Tami Heim, Ann Hofmeister, Steven Hunn (all A).

Scott Jones, Marcia Keezer, Kyle Kemmlish, Brett Knickerbocker, Julie Koch, Charles Koenn, Laura Koepfle (all A), Andrew Koszegi, Steven Kropf, Rebecca Lee (all A), Jeff Leisinger, Kelly Machesky, Andrew Martin (all A), Laura McCracken, Joseph McDougall, Jeff Messman, Scott Miller, Scott Mills, Karen Moore, Mark Neff, Kendra Neibauer, Dawn Olson, Douglas Otto, Tina Paddock, Jason Pierson, John Popovich, Richard Proctor.

Stanley Randall, Stephanie Reynolds, Mary Ann Richardson, Rodney Satterthwaite, Thomas Schaff, Rachel Schmell, Cheryl Schulze, Joseph Simon (all A), Donald Skiff, Amy Smith, Joshua Smith, Lisa Smith, Matthew Smith, Mark Stebelton, Ann Stock, Phoebe Strong (all A), Philip Sweet, JoAnn Tobin, Beth Unterbrink, Willem van Reesema, Lisa Van Schoick, Anne Weber, Wendy Westphal, Patricia Wilber, Michelle Young (all A).

**8th GRADE —**  
Christine Arbogast, Kay Bauer, Connie Bollinger, Teresa Bort, Laurie Brugh, Allen Cole, Kevin Colombo, Liesel Culver, Dianne DeSmyther, Julie Dunlap, Kurt Eisenbeiser, Michele Fletcher, Chris Gallas, Walter Gray, Kimberly Guyor, Gerard Hamerschmidt, Michelle Harden, Laurie Heller, Mary Hellner, Brenda Hoelzer, Eric Inglis, Tammy Jankuski, David Kiel, Kimberly Kleis, Leslie Koeppe, LaVonne Kruse.

Brenda Lewis, Timothy Loucks, Jeffrey Martin, Tanya Mattoff, Edward Merkel, Richard Merkel, Mark Metro, Jeffrey Morgan, Deborah Morris, Thomas Mull, Susan Oesterle (all A), Mary Beth O'Quinn, Carrie Parkins, Dan Pennington, Susan Peterson, Mark Porath, Glen Prinzing, Steve Ramsey, James Ritter, Joyce Robards, Jodi Rowe.

Jeffrey Salyer, Rebecca Schlupe, Hallie Schmidt, Thomas Schumann, Carla Sears, Joan Shonk, Kimberly Smith, Mark Spayd, Eric Stofflet, David Tobias, Laurie Tressler, Gretchen Vogel, Keven Wahr, Daniel Waldyke, LeAnn Walz, Carol Warren, James Weber, Shelley Wheaton, Linda Wiedmayer, Karen Wilson, Michael Wynn.

**Phone Assistance Available To Help With Census Forms**

The Census Bureau is staffing telephones from March 28 through mid-April for persons needing assistance in completing their Census forms. These phones will be covered from 8:30 a.m. until 9:30 p.m.

A telephone assistance number is printed on the address label of each form. Due to a key-punch error, the assistance number for persons in the Ann Arbor-Ypsilanti area was misprinted. The toll-free number for other areas is correct, but the local Ann Arbor number is not.

The correct number in the Ann Arbor-Ypsilanti local dialing area is 996-0700. The label of some forms is incorrect. If your label has a number that starts with "996" please dial 996-0700, instead.

A widow or widower can get social security survivors benefits at any age if she or he has young or disabled children who are eligible for payments on the deceased worker's social security record.

# Letters to the Editor

To the citizens of Chelsea: I am thankful for people willing to share their viewpoints, as Caroline Arbogast did. I would like to say something in addition to her fine letter.

All of us agree on one thing: Taxes are becoming outrageously high. But even if we vote down a millage, they will continue to grow by increased evaluation. I think we can all agree that some other way to pay school taxes should be sought. BUT: while you are voting no, are you writing letters to Lansing expressing your concerns, or are you just voting no, sitting back, and complaining, taking your frustrations out on our children.

Our teachers have a duty to teach children to be responsible, educated citizens. They have our children at least six hours a day, and then we vote no for some of the things we expect them to do with our children.

I would also like to understand how a non-teaching voter who strives for a better salary can tell an educator that they are not deserving of a higher wage.

Please, let's not take our frustrations out on our children. I urge you to vote YES, AND write letters saying we need a school tax reform of some kind. These are the people to write:

- Mary Keith Ballantine
- House of Representatives
- Lansing, Michigan 48901
- and
- Edward Pierce
- 745 Senate Office Bldg.
- Lansing, Michigan 48909
- Joanne Weber.

**To the Editor:**  
Yes, it has happened in Chelsea. What? The Pinckney Fire Department's representatives came into Chelsea the first part of March. On the telephone, a man's voice identified himself as "Adams of the fire department." He was selling tickets at \$5 apiece for a talent show for the benefit of the fire department. I agreed to take one ticket, because I knew "Adams." I gave him \$5. When I went to put the ticket away, I noticed it was for the Pinckney Fire Department, not the Chelsea Fire Department. I called Paul "Bud" Hanker of the Chelsea Fire Department. He said that there were "several" inquiries about the use of the name of "Adams." Adams left the fire department and Chelsea last summer.

I wrote the Pinckney Fire Department demanding my money back, as well as the others who were deceived. I have had no answer. The Detroit Police Department has had similar deceptions, worked by others than the D.P.O.A. Who would think Chelsea would be invaded by a neighboring town, with deceitful canvassers for tickets for their town's fire department?

John J. Wellintz  
520 Howard Rd.

**Dear Editor:**  
We the students of the Spanish IV class at Chelsea High school feel that the public should be made aware of the problems caused by a lack of funds due to the millage failure of last August. We are presently operating under a carry-over balance from 1979-80 school year which is not sufficient to fulfill the needs of this school year and most certainly not next year.

We would like to inform you of some of the shortages we are faced with. First, all of the necessary learning materials for our Spanish class are paid for by

This includes dictionaries, Spanish magazines and any novels we are required to read. Also, the remaining students wishing to continue on with their studies in Spanish next year will be restricted to combined classes with lower learning levels making it difficult to excel in this area.

Other academic areas are suffering as well. The foods classes are able to cook only if they are willing to pay for the food themselves. Photography classes are forced to pay for their own film as well as photography paper. If they fail to buy these materials, it results in a failing grade in the class. In all literature classes if the books are not on hand (which they usually are not) students are required to buy them or again—fail.

Many parents resent the fact that their children are always asking for money. If they had supported the millage when given the chance, a great portion of these requests might have been reduced.

Please seriously consider what we have written here. As juniors we are looking forward to a rewarding and educational senior year. Please support your educational system—VOTE YES.

- Marcia Warren.
- Pris Drew.
- Angie Inglis.
- Julie Sundling.
- Diane Thompson.

**Dear Editor:**  
From the volume of mail I have received from across the entire state, I am aware of how concerned many of your readers are over Michigan's current property tax situation. As you may know Representative Roy Smith and I are sponsoring a petition initiative and legislative ballot efforts which deal with the most pressing property tax issues facing the people of Michigan.

—First is the problem of excessive property taxes on our homes.

—Second is the extreme burden of property tax increases upon the elderly and those on fixed incomes.

—Third is the rollback of property taxes by class to stop tax increases that rise faster than inflation.

—Fourth is the goal of obtaining quality education for all of Michigan's students.

It used to be that the amount of real property owned was a fair in-



A BRAND NEW TOY was enjoyed by the children of Chelsea Co-Op Nursery last week, courtesy of members of Girl Scout Troop 82. Ben

Havens, 4, and Monica Hansen, 5, take turns at the toss game, while Scouts Kristen Roberts, Dawn Zaineb and Sommer Havens look on.

dicator of a person's ability to pay taxes; that's no longer true with today's economy. The Smith/Bullard Plan would substantially reduce homestead property taxes by establishing a maximum state-wide levy of 24.5 mills, far below the rates commonly imposed today. In addition, most senior citizens (who are especially hard hit by property tax inflation) would be totally exempt from property taxation.\* Renters—who also feel the property tax pinch—will receive equal relief to that offered homeowners after the Smith/Bullard Plan is approved by the voters.

The revenue needed to provide a quality education would be made up by less than a two percent increase in the state income tax. Also, the legislature would be empowered to levy a property tax on industrial, developmental, and commercial properties, not to exceed 30.5 mills. This revenue would then be shared by students on an equal basis, thus assuring a quality education for all our school-aged children.

The Smith/Bullard Plan would guarantee strong local control over schools, and would allow the voters in each district the option of approving local educational enrichment funds of either 7 mills of a one percent income tax. This,

would be up to each district's voters. Locally determined taxes for county, township and city governments would also be left to the discretion of the voters.

Another major point of the Smith/Bullard Plan is that it would provide for a rollback, by class of property, of taxes which increase faster than the rate of inflation. Many voters thought this had been done by the so-called "tax limitation amendment." But homeowners and family farms are receiving little relief because the 1978 amendment only limited the rate of growth of the total assessed value of all properties in a governmental unit. It did not limit the rate of growth of each class of property. Since industrial and commercial property values are increasing

below the rate of inflation, the values of residential property can increase—and are increasing—under the "Headlee Amendment" faster than inflation!

I hope your readers agree that the Smith/Bullard Plan is a sound approach to property tax relief, and will support the petition drive that is just beginning. Besides just signing the petitions interested people can also help by circulating them as well as writing to their State Representatives and Senators, and letting them know that they're supporting the Smith/Bullard Plan.

Perry Bullard  
State Representative  
\*Retirees seniors will pay no property tax on their home's first \$25,000 of state equalized value, which is equivalent to \$50-60,000 actual cash value. The \$25,000

**HOST Carpet Cleaning**  
April showers bring spring flowers—but they also create mud for little feet to track onto your carpeting. We recommend Host, the new method of cleaning carpets without water. The carpet is dry and ready to walk on immediately. Use our Host Electric Up-Brush. It's easy. Clean 40 sq. yds. only \$9.95. Phone for information.

**MERKEL BROTHERS**  
Phone 475-8621

**BEEP!**

For 75¢ a day!

It doesn't cost much to stay in touch! Get a RAM beeper and see how 75¢ a day can mean savings in time, gas and money. While you're at it, let your RAM beeper help boost your business. Call us, we'll show you how.

**ROOT ANSWERING SERVICE**

**RAM**  
The Beeper People!  
665-2337

**FEED FOR PROFIT**

See us for feed needs!

Feed Formulas Tested, Proved To Get Results

Extra proteins, vitamins and minerals in proper balance, scientifically blended, make our feeds real profit producers for you.

**Farmers' Supply Co.**  
Phone 475-5511

**Culligan filtered conditioned SOFT WATER**

LIKE HAVING A FAMILY SERVANT!

You'll find that you can clean kitchens and baths in a fraction of the time. Eliminates dulling hard water film... helps keep everything cleaner longer. Saves on soaps and cleaners.

ASK THE MAN WHO CARES! SAY:

**HEY CULLIGAN MAN!**

2321 JACKSON AVE  
ANN ARBOR  
662-5665

**Crazy Tire Sale (everything is a little off)**  
(INCLUDING THE HELP!!)

**\$10 REBATE ON ALL SHELL STEEL BELTED RADIALS**

**\$5 REBATE On All Shell Fabric Radials and Polyester White Walls**

**MONROE SHOCKS \$14.95**  
HEAVY DUTY MONROE-MATIC (Plus installation)

**BRAKE SERVICE SPECIAL \$79.88**  
2-WHEEL FRONT DISC: install new front brake pads and grease seals. Resurface front rotors. Repack front wheel bearings. Inspect calipers and hydraulic system. Add fluid (does not include rear wheels).

MOST U. S. CARS, MOST DATSUN, TOYOTA, VW  
Warranted 12 months or 12,000 miles, which ever comes first.

SALES END APRIL 30

**BRODERICK'S TOWER SHELL**  
I-94 and M-52, Chelsea Phone 475-2722 for Appt.

# Fair Board Hosts State Co-ordinator

Regular meeting of the Chelsea Fair Board was called to order last week by vice-president Jerry Heydlauff.

Other officers present were Earl Heller, Maryann Guenther, Kay Poljan, Frank Renton, Lloyd Grau. Directors present included Jeff Layher, Jerry Herrick, Harold Trinkle, Bill Stofor, Gary Houle, Mark Stapish, Harold Gross, Charles Stapish, Bob Heller, Joe Merkel, III, Jim Holfeka, Reuben Lesser, Jr., Richard Bollinger and Ed Keizer.

Other present were Lyle and Mary Jones and Mickey O'Neil representing poultry displays; Dawn Jones for rabbit displays; Richard Bareis, sheep; Sue Van Natter, Else Heller and Charlene Eisenbeiser for Home Ec; Debby Spalding and Debby Holfeka, hobbies; Ken Haist, beef cattle; Otis and Mary Armstrong and Darlene Vargo for horse show; Janet and Tim Schulze, compact tractors; Dennis Petsch, kids' activities; Martin Ruhl, III, and

Amy Ruhl, floriculture; and John Wellnitz.

Before conducting fair business, the group heard a presentation by John O'Briant, agricultural fair co-ordinator who oversees fair state funds derived from the race tracks in the state. With 16 years of fair experience, he has been involved with them longer than anyone on the Chelsea board.

O'Briant showed slides demonstrating how to improve fairs, buildings, and individual and collective displays. He showed two slides at one time, demonstrating both good and not-so-good buildings and displays. The board found his hour-long lecture very educational.

Following the guest presentation, the meeting resumed with the secretary's and treasurer's reports. Superintendents, timing, judging and the fair catalogue were discussed and finalized.

Also, a scale has been purchased and the installation of the 30-ton scale will be done soon.

## Township Meetings . . .

(Continued from page one)

### Freedom Township

Supervisor, assessor, clerk and treasurer of Freedom township each received a \$300 annual raise at the annual meeting Saturday. The clerk and treasurer each will earn \$4,800 and the supervisor and assessor, \$3,300 each.

Trustees will receive \$30 per meeting.

Next year's proposed budget of \$89,000 is a 21 percent increase over the \$73,000 figure from last year.

Some \$5,500 is estimated to be received in federal revenue sharing funds, earmarked for the library and a gravel program for township roads.

### Webster Township

A budget of \$143,435 was proposed for the upcoming fiscal at the township's annual meeting last Saturday. This is an increase of 38 percent over last year's figure of \$103,746.

Supervisor Don Zeeb explained that a balance on hand brought forward from last year's budget and also valuation increases amount for the large budget figure.

Salaries of township officials were increased 10 percent, bringing the supervisor to \$8,055.96 annually, and the clerk and treasurer to \$6,219.62 each.

The one mill tax was renewed for one additional year.

Federal revenue sharing monies, estimated at \$9,200, will be used for road improvement and fire protection.

It was also decided at the meeting to increase the contribution to the township building fund from \$5,000 to \$10,000 for one year only. The fund now stands at \$22,275.

## Area Students Earn Degrees From MSU

Michigan State University lists 1,485 degree candidates for the recently-ended winter term.

Among them were the following local residents:

Vickie M. Koch, 12255 Scio Church Rd., Chelsea, BA in social science; Carlene M. Schultz, 5731 Pinckney Rd., Dexter, BS in agricultural and natural resources communication; Joan A. Ewers, 21669 Kaiser Rd., Gregory, BA in accounting; Carol J. Voytas, 17723 Pleasant Lake Rd., Manchester, MD in Human Medicine; and Katherine L. Amerman, 8595 Dexter Town Hall Rd., Pinckney, BS with high honors in mechanical engineering.

The degree candidates included 1,030 bachelor's, 338 master's, 67 doctoral, four educational specialists and 48 doctors of medicine.



SARA ULLMAN, an 11th grader at Chelsea High school, received a I rating and a 95 in proficiency for her cello solo in the Solo and Ensemble Festival, held March 22 in Farmington. Sara is a

member of the Chelsea High school Symphony Orchestra and the Chelsea High Chamber Orchestra. She is a student of John Dunham of Ann Arbor.

## Carl's Cleaning Service

409 W. Middle St. Chelsea, Mich.

Professional Carpet & Upholstery Cleaning

BUSINESS - RESIDENTIAL

FREE ESTIMATES

Phone 475-8007

Advertisers Like To Know You  
Read Their Adv. in The Standard

## LITTLE ROOSTER RESTAURANT & LOUNGE

PHONE 426-8668

11485 North Territorial Rd. (Corner Dexter Townhall Rd.)

DINING and COCKTAILS

Friday and Saturday, April 4-5

Jim Gaken and The Researchers

HOURS: Tues., Wed., Thurs. . . . . 4 p.m. to 11:30 p.m.  
Friday . . . . . 4 p.m. to 2 a.m.  
Saturday . . . . . 2 p.m. to 2 a.m.  
Sunday . . . . . 2 p.m. to 10 p.m.  
Monday . . . . . Closed

## BEAT THE HEAT WINTER and SUMMER with an EARTH SHELTER HOME

Come see one under construction in Waterloo.

ANN ARBOR-JACKSON CONCRETE FORMING CO.

CALL 1-498-2816

**BUSHELS AHEAD**

**BLANEY**

**ROUTE**

---

**Hi-Potential Single Cross B 606**

**YIELD CHALLENGER**

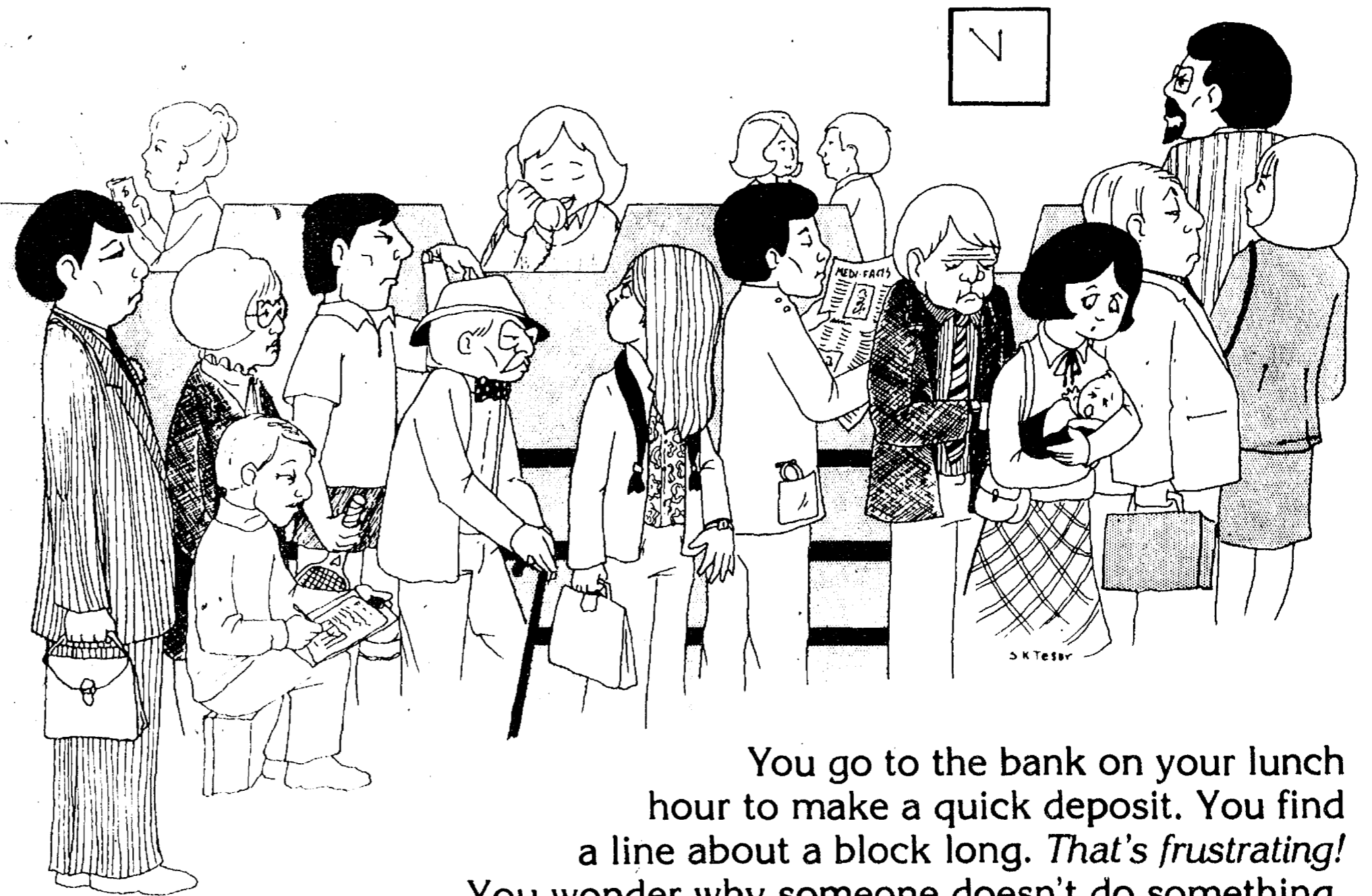
B 606 is a mid-season challenger with eye appeal, and more. This hybrid produces a big girthy ear that fills the wagon or bin in a hurry. Excellent standability and clean easy harvesting. Surprising yields. A must for your best acres.

Also Available:  
3-WAY CROSS  
and all varieties  
of Waxy Corn.

**CHAS. W. TRINKLE & SONS**

Ph. (313) 475-7798  
9631 Trinkle Rd.  
Dexter, Mich. 48130

# When your time is worth money, you don't want to spend it in line.



You go to the bank on your lunch hour to make a quick deposit. You find a line about a block long. *That's frustrating!*

You wonder why someone doesn't do something.

At Ann Arbor Trust, we realize it's impossible to completely eliminate rush hour lines. But we've taken steps to minimize this problem. During busy periods we have extra tellers available to help save your time.

At Ann Arbor Trust we try to satisfy your needs before you have them. We're thinking about you.



## ANN ARBOR TRUST

THE BANK OF TRUST  
CHELSEA BANKING OFFICE • 475-9154  
1478 Chelsea-Manchester Road • Member FDIC

# KLINGE'S German Haus

in STOCKBRIDGE

## EVERY SUNDAY

11 a.m. to 5 p.m.

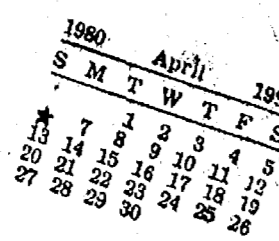
**SALAD BAR HOT BUFFET**  
WITH A GREAT SELECTION

All you can eat  
**\$4.99**

Children under 10, \$2.99

TUESDAY THRU THURSDAY OPEN 11 a.m. to 7:30  
FRIDAY AND SATURDAY OPEN 11 a.m. to 9:00

# Community Calendar



Chelsea Lioness Club, second Monday of each month, 7:30 p.m., Chelsea Community Hospital Conference Room.

Easter Breakfast, April 6, 8 to 10 a.m., Waterloo Town Hall. Donations. adv43

Chelsea Community Farm Bureau, Thursday, April 10, 7:15 pot-luck at the home of William and Betty Sanderson.

St. Mary's Altar Society Easter Bake Sale, Saturday, April 5, 9 a.m. to 4 p.m. at Sylvan Town Hall, Chelsea. xadv43-2

OES rummage sale, Thursday, April 10, 12:30 at the temple. adv44-2

Waterloo Village United Methodist church father and son banquet, Saturday, April 12, 6:30 p.m., Waterloo Town Hall. Public invited.

Knights of Columbus Women's Auxiliary, second Thursday of each month, 8 p.m. at K. of C. Hall, 20750 Old US-12.

Lyndon Township Board regular meetings the third Tuesday of each month, 7 p.m., in Lyndon Town Hall. adv42tf

Lima Township Planning Commission, first Tuesday of each month, 8 p.m., Lima Township Hall. advx2tf

Meetings of the Lyndon Township Planning Commission are held at 8 p.m. the second Thursday of every month at Lyndon Town Hall. advtf

Sharon Township Board regular meeting, first Thursday of each month, 8:30 p.m. adv42tf

Chelsea Kiwanis Club meets every Monday, 8:30 p.m. at Chelsea Community Hospital.

Lima Center Extension Club, Wednesday, April 9, 10:30 a.m. at Mary Haselswerdt's, 7360 Second St., Dexter. Meeting followed by pot-luck at noon. Weed demonstration by Hilda Lindemann in afternoon. Reservations will be taken for the spring rally set for April 29. Members are asked to bring home-made articles.

St. Mary's Altar Society, Monday, April 7, 7:30 p.m. Guest speaker, Fr. McAllister of St. Joseph Mercy Hospital, Ann Arbor.

Olive Chapter No. 108, OES, pot-luck and meeting, Thursday, April 10, 12:30 at the temple.

Rogers Corners Farm Bureau, Friday, April 11, 8:30 p.m. at the home of Albert Schenk, 10850 Waters Rd., Ann Arbor.

Volunteers of Chelsea Community Hospital, annual card party in hospital dining room, April 17. adv43

Class of 1975, Chelsea High school, meeting Thursday, April 17, 7:30 p.m. at Wolverine Bar.

Kinder Klub, Tuesday, April 8, 7:30 p.m. at home of Elaine Stahl.

Stockbridge American Legion Dance, Saturday, April 5. Music by The Playboys. 9 p.m. to 1 a.m. adv43-2

The Church of Jesus Christ of Latter Day Saints (Mormons) meets every Sunday at the Rebekah Lodge. Public welcome.

Chelsea Community Hospital Nutrition Program pre-natal nutrition classes, fourth Tuesday of each month, 6 to 7 p.m. at the hospital. To register, phone 475-1311 (ext. 354). Class is free of charge.

North school Parent Group, first Thursday of each month, 8 to 9:30 p.m., North school Media Center.

Chelsea Village Council meets the first and third Tuesdays of each month. advtf

Inverness Country Club pot-luck and euchre party, 6:30 p.m., first Tuesday of each month. adv17tf

Chelsea Band and Orchestra Boosters, second Thursday of each month, 7:30 p.m., high school band room.

Lima Township Board regular meeting first Monday of each month, 8 p.m., Lima Township Hall. advtf

L.D./E.I. Parent Group meets every second Wednesday of the month, 7:30 p.m., Room 210 at Chelsea High school.

Lions Club, first and third Tuesday of every month, 6:45 p.m., at Chelsea Community Hospital.

Chelsea Co-op Nursery is now accepting applications for fall 1980. Please call Carol Trinkle, 475-8970, or Marcia Hansen, 475-9718. adv38tf

Chelsea Athletic Boosters meet fourth Wednesday of each month in the Chelsea High school cafeteria. 1980 dates: March 26, April 23, May 28.

Sylvan Township Board regular meetings, first Tuesday of each month, 7 p.m., Sylvan Township Hall, 112 W. Middle St. advtf

American Legion hospital equipment is available by contacting Larry Gaken at 475-7891.

Lamaze childbirth preparation classes are offered continually at Chelsea Community Hospital. To register, call 475-9558 or 475-7484.

Chelsea Communications Club meets fourth Wednesday of each month, 8 p.m., Chelsea Lanes basement meeting room.

## + AREA DEATHS +

### Mary C. Sacher

Dies Monday at Hospital Following Long Illness

Mary C. Sacher, 8720 Dexter Town Hall Rd., Pinckney, died Monday, March 31, at Chelsea Community Hospital after a long illness. She was 71.

Mrs. Sacher was born May 24, 1908 at Rockford, O., the daughter of Anthony and Philomena (Herman) Rulman. She was a former Chelsea resident who was living in Dexter township.

Survivors include her husband, Marvin; a son, John, of Media, Pa.; four brothers, Ralph Rulman of Defiance, O., Edward Rulman of Muncie, Ind., Harold Rulman of Defiance, O., Norman Rulman of Paulding, O.; two sisters, Elizabeth Rulman of Paulding and Mrs. Ray (Eleanor) Richman of Defiance.

Funeral services were held Wednesday, April 2 at 12 noon at St. Mary's Catholic church with the Rev. Fr. Philip Dupuis officiating. Burial followed at Pinckney Cemetery, Pinckney.

The rosary was recited Tuesday evening, 8:30 p.m., at the Staffan Funeral Home.

### Census Worker Exam Scheduled

Those interested in working on this year's census still have an opportunity to take the census worker examination this Friday, April 4 in Ann Arbor.

The exam will be offered at 10 a.m., noon, and 2 p.m. at the Federal Building on Liberty St.

### John E. Dvorak

Retired Federal Screw Works Employee Dies at Home

John E. Dvorak, 16893 Waterloo Rd., died suddenly Thursday, March 27, at his home. He was 64.

Born Jan. 11, 1916 in New Prague, Minn., Mr. Dvorak was the son of John F. and Anna (Walsh) Dvorak. He was married to Hazel Slane Jan. 7, 1939. She survives.

Mr. Dvorak was a veteran of World War II, serving in the Pacific theater. He was employed at the Federal Screw Works for 28 years, retiring in 1978. He was a member of St. Mary's Catholic church and the Knights of Columbus.

Surviving with his widow are three daughters, Mrs. Gene (Patricia) Borders, Mrs. Robert (Jeannine) Riemenscheider, and Mrs. Dan (Roberta) Hoffenbecker, all of Chelsea; four grandchildren. A brother, Robert, was killed in action in the South Pacific during World War II.

Funeral services were held Monday, March 31, 1980 at 11 a.m. at St. Mary's Catholic church with the Rev. Fr. Philip Dupuis officiating. Burial followed in Mt. Olivet Cemetery. The rosary was recited Sunday evening at 6:30 p.m. at the Staffan Funeral Home.

Memorial contributions may be made to St. Mary's church in Mr. Dvorak's name.

Advertising revenue pays for costs of producing The Standard. Let the merchant know you appreciate it.

### Roy Haber

Services in Dexter Monday For Former Flint Resident

Roy Haber of Flint, died Tuesday, April 1 at the Baptist Park Nursing Center in Taylor. He was 91.

Mr. Haber was born Oct. 3, 1889 in Romeo. On April 22, 1910, he married Elizabeth Farrell. She died Nov. 2, 1971.

Mr. Haber was a long-time employee of Chevrolet as a manufacturing supervisor. He retired in 1944. He was also an insurance salesman for more than 50 years.

He was a member of St. Michael's Catholic church in Flint.

Survivors include a son, Paul Haber of Dearborn; three grandchildren; four great-grandchildren; and several nieces and nephews in the Dexter-Chelsea area.

Funeral services will be held Monday, April 7, at 9:30 a.m. at St. Joseph Catholic church in Dexter with the Rev. Fr. Kenneth McDonald officiating. Burial will follow in St. Joseph Cemetery.

The rosary will be recited Sunday evening, 7:30 p.m., at the Staffan Funeral Home. Friends may call at the funeral home after noon on Sunday.

### E. Schirmmacher

Chrysler Proving Grounds Employee Dies Friday

Eugene Schirmmacher, 642 S. Main St., died Friday, March 28 in his home. He was 52.

Born Aug. 5, 1927 in Paterson, N.J., to Curtis and Frances (Horner) Schirmmacher, Mr. Schirmmacher had resided at 642 S. Main since 1972. On Oct. 16, 1949, he married Virginia Rumph in Ithaca, N.Y. She survives.

Mr. Schirmmacher was constable of Sylvan township from 1976 to 1978 and was chief steward for the UAW-CIO. Before coming to the Chrysler Proving Grounds, he was in the dry cleaning business in Ann Arbor.

He was also a Boy Scout explorer advisor and a former member of the Civil Defense Auxiliary Police Department.

Survivors include his widow; two sons, William of Florida, Harvey of Detroit; three daughters, Mrs. Robert (Christine) Herrst of Chelsea, Mrs. Thomas (Carolyn) Hepburn of Chelsea, Miss Candace Schirmmacher at home; four grandchildren, Tricia, Veronica and Francis Schirmmacher of Detroit and Kimberly Herrst of Chelsea; three brothers, Harvey and Dale Schirmmacher of New York and Norman Schirmmacher of California; one sister, Carol Hogue of Florida; several nieces and nephews.

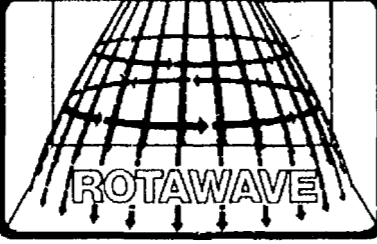
Funeral services were held Monday, March 31, 1 p.m. at the Burghardt-Cole Chelsea Funeral Chapel with the Rev. Ira Wood officiating. Burial followed in Oak Grove Cemetery.

Memorial contributions may be made to the American Cancer Society.

Subscribe today to The Standard.

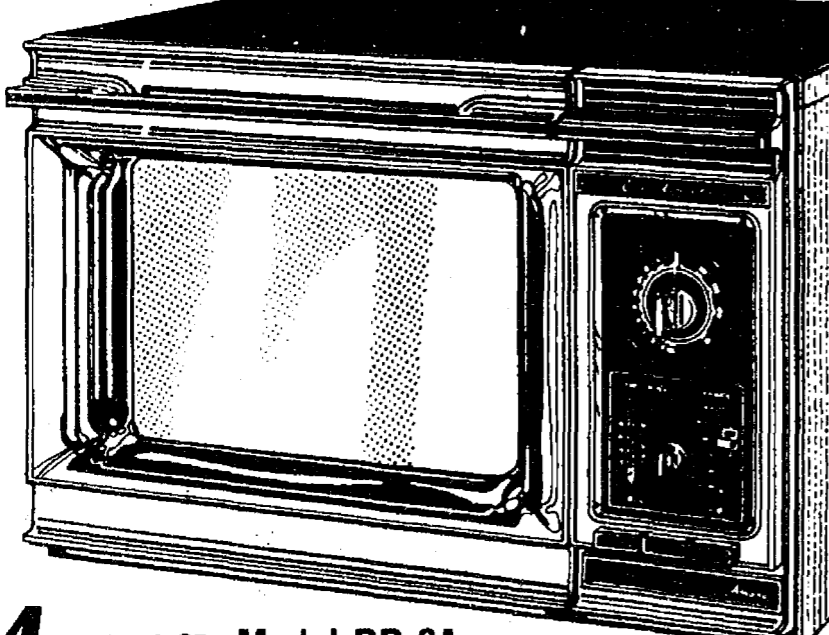
ANOTHER AMANA FIRST...THE EXCLUSIVE

**Amana Radarange**  
MICROWAVE OVEN  
**ROTAWAVE**  
COOKING SYSTEM



A rotating shower of power that cooks more evenly and cooks most foods faster than ever before!

A rotating antenna beams microwave energy directly at food in a uniform, rotating pattern.



**SO FOODS COOK MORE EVENLY!**  
Even rows of cookies or several potatoes cook more evenly than ever before.

**MOST FOODS COOK FASTER!**  
Some foods like cakes, pies and muffins now bake up to twice as fast.

**COOKS MORE CONVENIENTLY!**  
Most foods require no turning because the Rotawave antenna rotates microwaves through the food.

**BETTER FOOD QUALITY!**  
Breads, cakes, even egg dishes turn out lighter and fluffier. Meats brown more evenly.

#### Amana Model RR-8A

- Cooks by time or cooks to temperature. Even holds at temperature to tenderize economy cuts of meat.
- Lighted scale shows actual food temperature plus the temperature you selected.
- Cookmatic Power Shift™ with infinite settings from "WARM" to "HIGH" — because different foods cook best at different speeds.
- 700 watts of cooking power on "HIGH."
- Cooks most foods with 50% to 75% less energy than a conventional electric range.
- Automatic dial timer — up to 30 minutes.

See a demonstration today of the energy saving, time saving

**Amana Radarange**  
MICROWAVE OVEN

**EASTER SPECIAL**

Model RR-8A (Shown above) **WAS \$469.95 - NOW \$388.88**

**COOKING DEMONSTRATION**  
SATURDAY, APRIL 5 - 10 a.m. to 2 p.m.

LENORE MATTOFF will be in our store to demonstrate and answer questions about microwave cooking.

FREE Popcorn Popper and Coffee Maker with any Touchmatic II purchased Easter week-end. \$40 value.

**HEYDLAUFF'S**

113 N. Main St., Chelsea

Ph. 475-1221

## Wheel Horse Pre-Season Sale

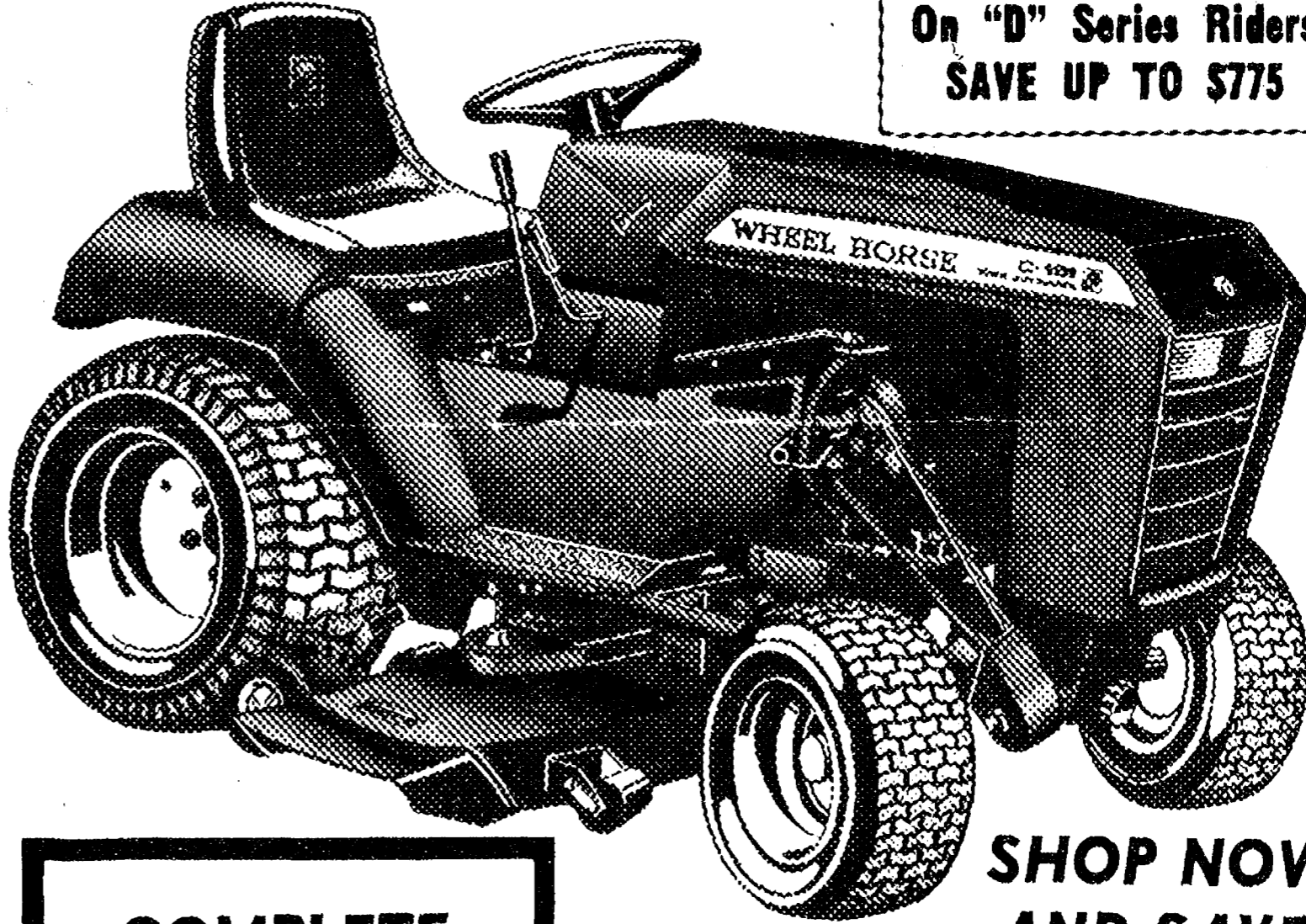
**LAST 3 DAYS** THROUGH APRIL 6, 1980  
**TO SAVE UP TO \$775.00**

**WHEN YOU BUY A NEW WHEEL HORSE.**

"Now through April 6th, 1980, you can save big when you purchase selected new Wheel Horse models."  
"It's a value a Scotsman can appreciate."

#### Jackie Stewart

- Three-time world driving champion.
- International sports commentator.



On "A" Series Riders **SAVE \$100**

On "B" Series Riders **SAVE UP TO \$300**

On "C" Series Riders **SAVE UP TO \$625**

On "D" Series Riders **SAVE UP TO \$775**

**SHOP NOW AND SAVE!**

**COMPLETE SELECTION**  
5 h.p. to 16 h.p.

**A SMALL DEPOSIT WILL LAY-AWAY**

**WHEEL HORSE**  
lawn & garden tractors

GO

**GAMBLES**

110 N. Main St., Chelsea

Ph. 475-7472

Offer good only at participating dealers through April 6, 1980.



## Regional Spelling Bee Completed

Wednesday, March 28, champion spellers from Beach, North and South schools competed in the Regional Spelling Bee, sponsored by The Detroit News.

The contest included 19 spellers from Washtenaw county.

Kim Smith, an eighth grader from Beach school, finished fourth. Dawn Thorne, a North fifth grader, was sixth; and Melanie Flanigan, a fifth grader from South school, finished eleventh.

Each student received an engraved dictionary as their award for winning their respective school championships.

## Energy Cost Workshop Scheduled

Chelsea's Community Education Department will be hosting an energy cost workshop, co-sponsored by the Michigan Environmental Education Association and the U. S. Department of Energy.

There are two workshop dates: Thursday, April 3 and Thursday, May 15, 7 to 10 p.m. in the high school media center. Cost is \$8, which includes workshop materials.

This project seeks to assist homeowners in making choices about energy costs and reducing national energy consumption. Course materials will aid in guiding the homeowner to effective energy consumption.

Anyone interested in attending may either contact the Community Education Department, 475-9830, or send in the registration form found in the Spring Community Education Brochure.

## Lions Offer Help With Census

United States Census forms were mailed out during the last week in March. Persons with sight or hearing impairments can receive assistance in filling out these forms from their local Lions Club.

Local residents may call Dave Scriven, vice-president of the local Lions Club, at 426-2414, or may call, toll-free, 800-292-5867.

## Richard M. Worden Promoted with Army Unit in Germany

Richard M. Worden, son of Mr. and Mrs. Haskell Worden, 25 Cedar Lake, Chelsea, recently was promoted to Army staff sergeant while serving as a wheeled-vehicle mechanic with the 66th Military Intelligence Group in Germany.

Worden's wife, Heidi, is with him in Germany.



"BOTH" is the word in question here, as Chelsea resident Gloria Foster, second from left, explains its rather difficult formation in sign language. Her students are teachers at North school, who are learning to sign as a means of better communication with

non-verbal and hearing-impaired students. Trying out the symbol are, from left, Jody Williams, Barbara Frame, Geni Frzcinski and North Principal Robert Benedict. Not pictured is Peggy Moore.

# School Personnel Learning Sign Language Techniques

It's an odd sight to say the least: eight adults perched on chairs designed for nine-year-olds, moving their hands in unison in the air.

What looks out of place and somewhat mysterious, however, turns out to be four local teachers and an elementary school principal learning sign language to be able to better communicate with their students.

Four North school special education and speech teachers, Geni Trzcinski, Jody Williams, Peggy Moore, and Barbara Frame, and Principal Robert Benedict have gathered together each Monday afternoon around a tiny classroom table at North school to learn the technique of signing from Chelseaite Gloria Foster.

The class was originated when a number of the elementary school teachers expressed a desire to better communicate with their students who are non-verbal or deaf.

Gloria Foster, herself hearing impaired and completely convinced of the need for better understanding of the deaf, was the perfect choice for the job.

On any given Monday, the group may be seen in the speech room, practicing individual words and phrases and learning to construct sentences, all through relatively simple hand movements.

"Sign" language, Gloria Foster points out, is not just another form of English, but a true foreign language, understandable all over the world. In fact,

she said, sign language ranks third or fourth highest among foreign languages in the world.

For Gloria, the fact that the teachers and Mr. Benedict specifically asked for the instruction is extremely important.

"This is what I want," she said. "I want people to take the time to work with the deaf. So often people say 'deaf and dumb,' but deaf people are not dumb. The deaf learn what other people take the time to teach them."

With the beginnings of closed captioned television programs for the hearing-impaired, Gloria feels that things may be looking up for the deaf, opening more opportunities to them.

Educators are not the only local residents interested in learning to sign. Gloria also taught a

10-week class through the Adult Education Program during the winter session. When the course was through, she said, the students petitioned the Community Education Department to have instruction go on.

Because of demands on her time, Gloria declined to continue the class immediately, but agreed to teach an advanced level class in the fall.

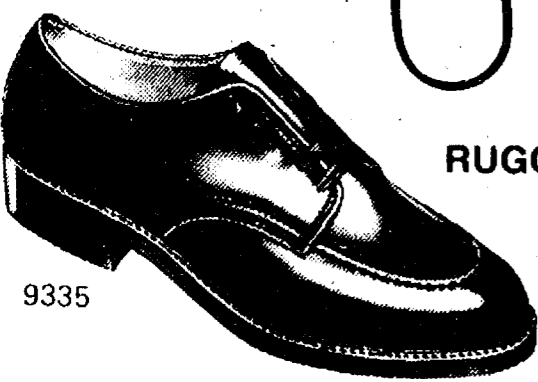
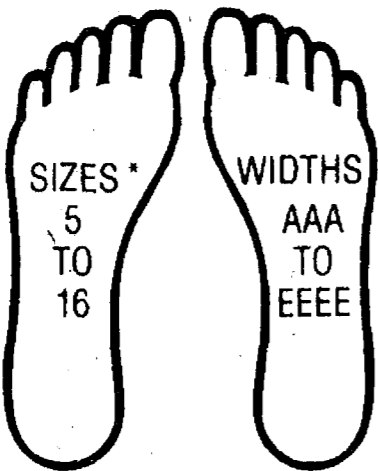
In addition, she is currently tutoring two local residents in signing, so that they will be able to communicate with their future daughter-in-law, who is deaf.

The sessions at North school ended this week because of end-of-school-year pressure beginning to be felt by the teachers. All, however, are anxious to

(Continued on page 11)

Residential - Commercial  
**REMODELING**  
FREE ESTIMATES  
**ib. V. JENSEN and SON**  
LICENSED BUILDER  
378 Spring Lake Drive  
Chelsea, Mich.  
PHONE 475-1820

We are shoe fitters first... shoe salespeople second!



RUGGED SHOES FIT FOR WORK OR LEISURE

9335

\*Not all sizes in all widths.

RED WING SHOES

**Red Wings**

VOGEL'S & FOSTER'S

Phone 475-1606

Chelsea, Mich.



McDonald's helps you make the most of your morning.

Now Open Weekdays, 6:30 a.m.

Ahhh morning. It's special. And at McDonald's, we serve you breakfast fast, so you get a little extra time each morning. The time you usually

waiting for it. You can enjoy a delicious hot meal of fresh Grade A Scrambled Eggs with Pure Pork Sausage and Golden Hashbrowns.

And still have time to do something just for you.



Something that will really make the most of your morning.

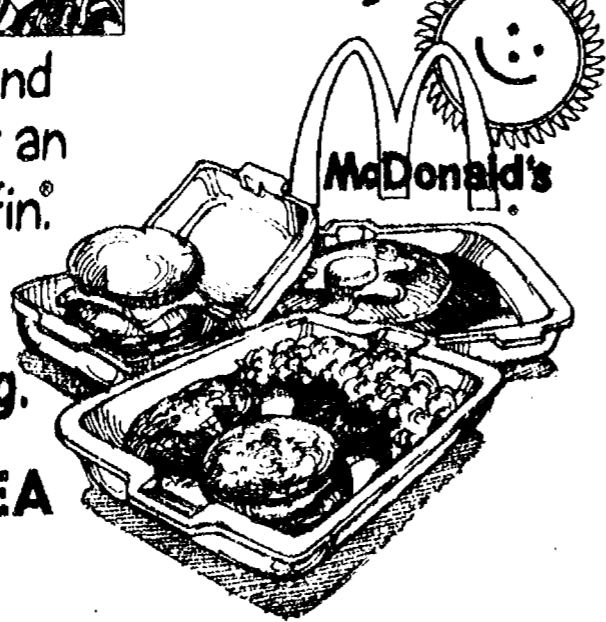


Hotcakes and Sausage. Or an Egg McMuffin.

spend preparing breakfast. Or

Make us a part of your morning.

1535 S. MAIN ST., CHELSEA  
PHONE 475-9620



Step out of line and go for the high savings dollar!

Just \$500 buys you **11 3/4%** INTEREST

Top of the market interest earnings are yours when you invest in a 30-Month Certificate Account. These high interest earning certificates are within the reach of every saver. Just a minimum deposit of \$500 is all it takes to step out and be a high interest earning investor. The

interest rate varies each month on this type of certificate, but when once purchased, the interest rate remains locked-in for the life of the certificate, a full 2 1/2 years. Put your money to work today, earning guaranteed high interest.

CHELSEA STATE BANK

Member F.D.I.C.

**CSB**

By law, a substantial penalty is charged for early withdrawal of time funds.

# Come to Church for Easter Services

**CHURCH OF CHRIST**  
13661 Old US-12, East  
Evangelist John M. Hamilton  
Every Sunday—  
7:30 a.m.—Radio program—  
WNRS in Saline.  
8:30 a.m.—Radio program—  
WAAM in Ann Arbor.  
9:30 a.m.—Bible study.  
10:30 a.m.—Worship service.  
Nursery available.  
8:00 p.m.—Sunday evening Bible study.  
Every Tuesday—  
7:00 p.m.—Women's Bible study class.  
Every Wednesday—  
7:30 p.m.—Bible study classes for all ages.

**ST. JACOB EVANGELICAL LUTHERAN CHURCH**  
The Rev. Andrew Bloom, Pastor  
12501 Rietmiller Rd., Grass Lake  
Every Sunday—  
9:00 a.m.—Sunday school.  
10:15 a.m.—Divine services.

**ST. JOHN'S EVANGELICAL AND REFORMED CHURCH**  
(United Church of Christ)  
Francisco  
The Rev. Ben Mahrle, Pastor  
Every Sunday—  
10:30 a.m.—Sunday school and worship service.

**ST. MARY CATHOLIC CHURCH**  
The Rev. Fr. David Philip Dupuis, Pastor  
Mass Schedule:  
Every Saturday—  
5:00 p.m.—Mass.  
Confessions immediately following Mass on Saturday.  
Every Sunday—  
8:00 a.m., 10:00 a.m., 12:00 noon—Mass.

**ST. THOMAS EVANGELICAL LUTHERAN**  
Ellsworth and Haab Rds.  
The Rev. Paul Puffe, Pastor  
Every Sunday—  
9:30 a.m.—Sunday school.  
10:45 a.m.—Worship service.

**FIRST UNITED METHODIST CHURCH**  
The Rev. Marvin H. McCallum, Pastor  
Thursday, April 3—  
7:00 p.m.—Maundy Thursday Silent Communion Service.  
Friday, April 4—  
1:00 p.m.—Good Friday service at St. Paul United Church of Christ.  
Sunday, April 6—  
7:00 a.m.—Easter Sunrise Service.  
7:45 a.m.—Breakfast.  
9:00 a.m.—Worship service.  
Crib nursery provided.  
10:00 a.m.—Worship service.  
Crib nursery provided for children up to the age of two.  
Church school for children ages two through five.  
10:20 a.m.—Church school for kindergartners through sixth graders.  
10:50 a.m.—Coffee hour in the narthex.  
11:00 a.m.—Church school for junior-senior high.  
11:00 a.m.—Adult discussion group.  
11:50 a.m.—All church school classes are dismissed.  
Monday, April 7—  
9:30 a.m.—Church Women United Executive Board meets in Litteral Room.  
Thursday, April 10—  
7:00 p.m.—Snack and Study Study Session in Education Building.

**COVENANT CHURCH**  
Dr. R. J. Ratzlaff, Supply Pastor  
K. of C. Hall, W. Old US-12  
Every Sunday—  
3:00 p.m.—Church school.  
4:00 p.m.—Worship and church time nursery.

**METHODIST HOME CHAPEL**  
Chaplain Ira Wood  
Every Sunday—  
8:45 a.m.—Worship service.

**ZION LUTHERAN CHURCH**  
Corner of Fletcher and Waters Rds.  
The Rev. John R. Morris, Pastor  
Friday, April 4—  
1:30 p.m.—Worship with Holy Communion.  
Sunday, April 6—  
7:00 a.m.—Sunrise service.  
8:00 a.m.—Breakfast.  
9:00 a.m.—Movie "Journey Into Faith."  
10:15 a.m.—Festival worship service with Holy Communion.  
Wednesday, April 9—  
7:30 p.m.—Church council.  
Thursday, April 10—  
7:30 p.m.—Senior choir.

**CONGREGATIONAL CHURCH**  
(United Church of Christ)  
The Rev. Carl Schwarm, Pastor  
Every Sunday—  
10:30 a.m.—Worship and Sunday school. Nursery provided for pre-schoolers.

**FIRST CHURCH OF CHRIST SCIENTIST**  
1883 Washtenaw Ave., Ann Arbor  
Every Sunday—  
10:30 a.m.—Sunday school, morning service.

**FIRST ASSEMBLY OF GOD**  
The Rev. Richard Coury, Pastor  
Every Sunday—  
9:45 a.m.—Sunday school.  
11:00 a.m.—Worship service.  
6:00 p.m.—Evening worship.  
Every Wednesday—  
7:00 p.m.—Christ's Ambassadors. Missionettes. Bible Meditation and prayer.

**CHELSEA FREE METHODIST FELLOWSHIP**  
Meetings at St. Barnabas Episcopal Church  
20500 Old US-12  
Every Sunday—  
3:45 p.m.—Sunday school for all ages.  
5:00 p.m.—Worship service.  
Every Thursday—  
7:30 p.m.—Adult study, Children's CYC program, and youth meeting.

**ST. JOHN'S UNITED CHURCH OF CHRIST**  
Rogers Corners  
Every Sunday—  
10:30 a.m.—Worship and Sunday school.

**GREGORY BAPTIST CHURCH**  
The Rev. David Brinkman, Pastor  
Every Sunday—  
9:45 a.m.—Sunday school.  
11:00 a.m.—Morning worship.  
6:00 p.m.—Young people.  
7:00 p.m.—Evening worship.

**CHELSEA CHRISTIAN MEN'S FELLOWSHIP PRAYER BREAKFAST**  
(Non-Denominational)  
First Saturday Each Month—  
8:00 a.m.—Breakfast.  
8:30-10:00 a.m.—Program.

**CHELSEA HOSPITAL MINISTRY**  
(Non-Denominational)  
Every Sunday—  
10:00 a.m.—Morning service, Chelsea Community Hospital Cafeteria.

**ST. PAUL UNITED CHURCH OF CHRIST**  
Dr. William C. Donald, Interim Pastor  
Thursday, April 3—  
7:30 p.m.—Maundy Thursday, Communion service.  
Friday, April 4—  
1 to 2:30 p.m.—Good Friday service.  
Sunday, April 6—  
6:00 a.m.—Sunrise service.  
7:30 a.m.—Easter breakfast.  
9:00 a.m. and 10:30 a.m.—Church school.  
10:30 a.m.—Communion service.  
Tuesday, April 8—  
7:30 p.m.—Chancel choir.  
Wednesday, April 9—  
1:30 p.m.—World Wide.  
Thursday, April 10—  
7:30 p.m.—Spiritual Life.

**NORTH LAKE UNITED METHODIST CHURCH**  
The Rev. John Elliott, Pastor  
Every Sunday—  
10:00 a.m.—Worship service.  
10:30 a.m.—Church school for children age three through high school.

**NORTH SHARON BIBLE CHURCH**  
Sylvan and Washburne Rds.  
Tom Butterfield, Interim Pastor  
Every Sunday—  
10:00 a.m.—Sunday school. (Nursery available.) Junior church classes.  
11:00 a.m.—Worship service.  
6:00 p.m.—Senior High Youth meeting, Youth choir.  
7:00 p.m.—Evening worship service. (Nursery available.) All services interpreted for the deaf.  
Every Wednesday—  
7:00 p.m.—Bible study and prayer meeting. (Nursery available.) Bus transportation available: 428-7222.

**OUR SAVIOR LUTHERAN CHURCH**  
1515 S. Main, Chelsea  
The Rev. Franklin H. Giebel, Pastor  
Broadcast Sundays—  
"The Church of the Lutheran Hour."  
8:35 a.m.—WIBM, 1450 AM, Jackson.  
12:30 p.m.—WYFC, 1520 AM, Ypsilanti.  
Every Sunday—  
9:00 a.m.—Sunday school.  
10:30 a.m.—Morning Worship.  
7:00 p.m.—Bible study. Adult inquiry class, "Equipping the Saints."  
Every Thursday—  
1:00-2:30 p.m.—Bible study on the book of Revelations.

**WATERLOO VILLAGE UNITED METHODIST CHURCH**  
8118 Washington St.  
The Rev. Larry Nichols and The Rev. David Goldsmith, Pastors  
Every Sunday—  
10:00 a.m.—Sunday school.  
11:15 a.m.—Worship service.

**IMMANUEL BIBLE CHURCH**  
145 E. Summit St.  
The Rev. Ron Little, Pastor  
Every Sunday—  
9:45 a.m.—Sunday school, nursery provided.  
11:00 a.m.—Morning worship, nursery provided.  
6:00 p.m.—Evening worship.  
Every Wednesday—  
7:00 p.m.—Family hour, prayer meeting and Bible study.

**BETHEL EVANGELICAL AND REFORMED CHURCH**  
(United Church of Christ)  
Freedom Township  
The Rev. Roman A. Reineck, Pastor  
Every Sunday—  
10:00 a.m.—Worship service.

**ST. BARNABAS EPISCOPAL CHURCH**  
The Rev. Fr. Jerrold F. Beaumont, B.S.P.  
10:00 a.m.—Holy Communion first, third and fifth Sundays and 7:30 p.m. every Wednesday.  
10:00 a.m.—Morning prayer, second and fourth Sundays.  
Church school and nursery every Sunday.  
Every Wednesday—  
8:15 p.m.—Bible study and discussion groups.  
First Wednesday of every month—  
Bishop's Committee.

**FIRST UNITED PRESBYTERIAN CHURCH**  
Unadilla  
Ms. Peggy Hall, Lay-Preacher  
Every Sunday—  
9:45 a.m.—Sunday school.  
11:00 a.m.—Worship service.

**FIRST UNITED METHODIST**  
Parks and Territorial Rds.  
The Rev. Larry Nicols and the Rev. David Goldsmith, Pastors  
Every Sunday—  
9:15 a.m.—Morning worship.  
10:00 a.m.—Sunday school.

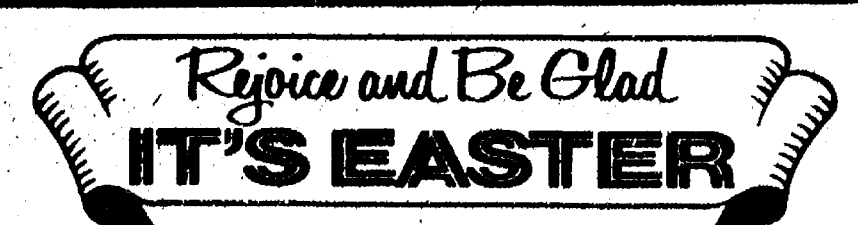
**CHURCH OF JESUS CHRIST OF LATTER-DAY SAINTS**  
(Mormon)  
Chelsea Branch  
Rebekah Hall  
Every Sunday—  
8:00 a.m.—Priesthood meeting.  
9:00 a.m.—Sunday school.  
11:00 a.m.—Sacrament Service.

**CHELSEA BAPTIST CHURCH**  
337 Wilkinson St.  
The Rev. Thode B. Thodeson, Pastor  
Every Sunday—  
10:30 a.m.—Morning worship.  
11:00 a.m.—Junior church school.  
6:00 p.m.—Evening fellowship.  
Every Wednesday—  
7:00 p.m.—Midweek Bible study and prayer.

**FAITH EVANGELICAL LUTHERAN CHURCH**  
9575 North Territorial Rd.  
The Rev. Mark Porinsky, Pastor  
Thursday, April 3—  
8:00 p.m.—Maundy Thursday evening service.  
Sunday, April 6—  
6:30 a.m.—Easter Sunrise service.  
7:30 a.m.—Easter Breakfast.  
9:00 a.m.—Fellowship, Bible games.  
10:00 a.m.—Worship service.  
Sermon on Luke 24.  
Monday, April 7—  
7:30 p.m.—Elders.  
Tuesday, April 8—  
No Confirmation II.  
Wednesday, April 9—  
No Bible Brunch or Confirmation.  
8:00 p.m.—Council.  
Thursday, April 10—  
7:00 p.m.—Sunday school teachers.  
8:00 p.m.—Choir.

**CHELSEA CHURCH OF THE UNCOMPROMISING WORD**  
11452 Jackson Rd.  
The Rev. Chuck Clemons, Pastor  
Every Sunday—  
10:00 a.m.—Sunday school.  
11:00 a.m.—Morning worship.  
6:30 p.m.—Evening worship.  
Every Wednesday—  
7:00 p.m.—Midweek prayer and Bible study.

**SALEM GROVE UNITED METHODIST CHURCH**  
3320 Notten Rd.  
The Rev. Ronald Brunger, Pastor  
Every Sunday—  
9:30 a.m.—Sunday school.  
10:30 a.m.—Worship service.  
Subscribe today to The Standard.



May the joy and the hope of the Risen Jesus be with you and yours.  
A Blessed Easter to all from  
**ST. MARY'S PARISH COUNCIL**  
and  
**OUR CHRISTIAN SERVICE COMMITTEE**

Announcing . . .  
**CHARISMATIC PRAYER MEETING**  
Everyone Welcome!  
**BEGINNING THURSDAY, APRIL 10th**  
7:30 to 9:00 p.m.  
St. Mary's High School Gymnasium  
400 Congdon St., Chelsea, Michigan  
Pray with us. Sing with us. Share with us.  
Grow with us in the Holy Spirit.  
Sponsored By Christian Fellowship of Chelsea  
475-7309

**EUCHRE TOURNAMENT**  
**Chelsea Rod & Gun Club**  
Linange Road, Chelsea  
**FRIDAY, APRIL 18**  
7:30 p.m.  
REFRESHMENTS - PRIZES  
DRAWINGS

**Real Estate**  
By **PAUL FRISINGER**  
REALTOR

**KNOW YOUR ZONING**  
In a nutshell, zoning laws lay out restrictions as to what kind of buildings may be constructed and how they can be used within certain geographic limits. A good community has zoning laws that protect its homeowners. However, they may also put a crimp into future remodeling plans you have in mind.  
height restrictions or lot-size limitations.  
Before buying, you should know what the zoning is, and the geographic limits of residential and business-zoned areas in your locality. It may affect the future value of your property and save you from an unexpected disappointment.  
For example, if the area is zoned for one-family homes, you may not be able to use a part of the house for some special use, such as converting an area for an apartment for a family member or rental or using a part of the house for an office or partly for business. There may be  
If there is anything we can do to help you in the field of real estate, please phone or drop in at **FRISINGER REALTY CO.**, 935 S. Main St., Chelsea. Phone: 475-8681; evenings 475-2621. We're here to help!

**The Bible - The Light from Heaven**  
Teaches about being in Christ. Second Corinthians 5:17 states, "Therefore if any man be in Christ, he is a new creature: old things are passed away; behold all things are become new." Everything that really matters depends upon one's being in Christ: happiness in life, hope in death and salvation in eternity. There are only two spiritual realms: We are either in Christ or in Satan. Jesus said, "He that is not with me is against me; and he that gathereth not with me scattereth abroad." (Matthew 12:30). A person may be in the kingdom of light or the kingdom of darkness, but there is no middle ground. If one is in Christ he has access to all spiritual blessings. (Ephesians 1:3). These blessings that are in Christ include forgiveness Ephesians 1:7, redemption Romans 3:24, sanctification I Corinthians 1:2, Joy Philippians 4:4, strength Philippians 4:13 and of course ultimately blessings of heaven. After one has been baptized into Christ Galatians 3:26, 27, he must continue or abide in that state. (John 15:4). The faithful in Christ are eternally blessed. (Revelations 22:14).  
**CHELSEA CHURCH OF CHRIST**  
13661 Old US-12 Chelsea, Michigan



**"Remember when . . ."**  
Memories between long-time friends are among the most valuable of possessions. And that's one of the reasons we're here. Our service honors the memory of someone you have loved with the greatest concern and understanding.  
When you are called upon to make a decision about funeral arrangements, call us.  
**BURGHARDT-COLE**  
**CHELSEA FUNERAL CHAPEL**  
214 East Middle Street  
Phone 475-1551  
Member, The International Order Of The Golden Rule

**BECKER MEMORIALS**  
6033 Jackson Road  
ANN ARBOR, MICHIGAN  
MAUSOLEUMS ★ MONUMENTS  
BRONZE TABLETS ★ MARKERS

**POWERFUL-IN-TRUCK . . .**  
Machinery for Amazing Results!!!  
**IN-SHOP . . .**  
Rug Cleaning, Auto Cleaning,  
Upholstery Cleaning,  
Rug Binding!!!  
WATER DAMAGE SPECIALISTS!!!  
**BEST WAY**  
CARPET CLEANING  
Mon.-Fri. 11:30 noon-6 p.m.  
Sat. 9 a.m.-3 p.m.  
Serving the Dexter-Chelsea area.  
201 E. Huron 443-3733

**ST. BARNABAS EPISCOPAL CHURCH**  
The Rev. Fr. Jerrold F. Beaumont, B.S.P.  
10:00 a.m.—Holy Communion first, third and fifth Sundays and 7:30 p.m. every Wednesday.  
10:00 a.m.—Morning prayer, second and fourth Sundays.  
Church school and nursery every Sunday.  
Every Wednesday—  
8:15 p.m.—Bible study and discussion groups.  
First Wednesday of every month—  
Bishop's Committee.

475-8680  
475-8689  
115 PARK ST.  
CHELSEA, MICH.  
**MAYER AGENCY**  
(of Springer-Kleinschmidt Agency, Inc.)  
Your Local Independent Insurance Agency providing dependable protection and prompt claim payment through 10 of the nation's leading insurance companies.  
**HOME - AUTO - BUSINESS INSURANCE**  
Sheridan W. Springer  
Ruth DeVine  
Charles A. Kleinschmidt  
Donald S. Peck  
Micky Quackenbush

**CUSTOM**  
**BUMPING and PAINTING**  
 FREE ESTIMATES - ALL MAKES  
*Get the Best for Less!*  
**FRANK GROHS CHEVROLET**  
 Phone 426-4677 Dexter, Mich.

**THURSDAY SPECIAL**  
**FOOT-LONG HOT DOGS**  
 and  
**MUG of ROOT BEER**  
**\$1.25**  
 Open Daily at 11 a.m.  
**A & W RESTAURANT**  
 M-52 AND I-94 PH. 475-2055  
 SAVE TIME - CALL AHEAD FOR CARRY-OUT ORDERS



*Let Our Advertisers Know  
 You Read Their Standard Adv.*

**"You Block people really know your stuff. I shoulda come here last year."**



Each year, all Block preparers are updated on all the latest changes in the tax laws. That's another way of making sure we can complete your return accurately and correctly.

**H&R BLOCK**  
 THE INCOME TAX PEOPLE

105 S. MAIN ST., CHELSEA  
 PH. 475-2752

Appointments available, 9 to 6, Mon. thru Sat.

**AGRICULTURE IN ACTION**  
**MICHIGAN FARM BUREAU EDITORIAL**

**★ Drafted Without Notice**

The after-shock of the Russian grain embargo is creating several problems for American grain producers.

Some have suggested that the embargo may help soybeans because wheat and corn made up the bulk of the cancelled sales. Most farmers, however, disagree with the assessment, saying that shutting down a market helps no one and that the long-term effects of the embargo will hurt producers of soybeans more than any immediate disruption of the market.

Brazil's fast-growing soybean industry can be traced to what the Japanese still refer to as the "Nixon Shock" that came with the 1973 U. S. moratorium on soybean sales. Bad weather, continuing "start-up" problems, inadequate transportation, and storage problems have all slowed the effect of Brazilian production on the world markets. The embargo will give a boost to their production efforts, and American farmers may as well brace for the "Brazilian Shock" market.

Meanwhile, Argentina is tooling up to expand production. France can also be expected to exploit the Soviet embargo. We

can expect a new world-wide scramble for grain and oilseed markets. With additional incentives, much of Africa can be highly productive. Watch for the Sudan, close to the Arabs, the USSR, and Europe, to open vast new acreages for production.

War has been described as "an extension of politics through other means..." An embargo is one such means. Through it, farmers have been "volunteered" in an economic war, pitting grain against guns. They were drafted without notice, under rules not published in advance. The shock has not worn off. American farmers are bewildered and upset.

The Secretary of Agriculture has told farmers: "If you wait, we will protect you from loss..." The farmer can't wait. He can't say to his banker, "I'll pay you when I sell my crop, but I can't sell until the government protects me against loss."

Farmers fear the results of some of the political attempts to cover their losses even more than they fear the losses themselves. For the first time in almost a decade, the government is getting ready to pay large numbers of producers not to grow grain.

Instead of going about the positive work of expanding existing markets and building new ones, we must consider shutting down part of the plant.

Farmers and ranchers stand firmly against government efforts to control their industry. Any action whereby government becomes the "customer" for farm products or takes over commodity trading from the private enterprise system holds great potential danger for farmers and for all citizens.

**Sign Language**

(Continued from page nine) begin again in the fall.

"Deaf people," says Gloria Foster firmly, "should have more of an opportunity." Instead of just waiting for things to get better, she is one of the rare people making those opportunities happen.

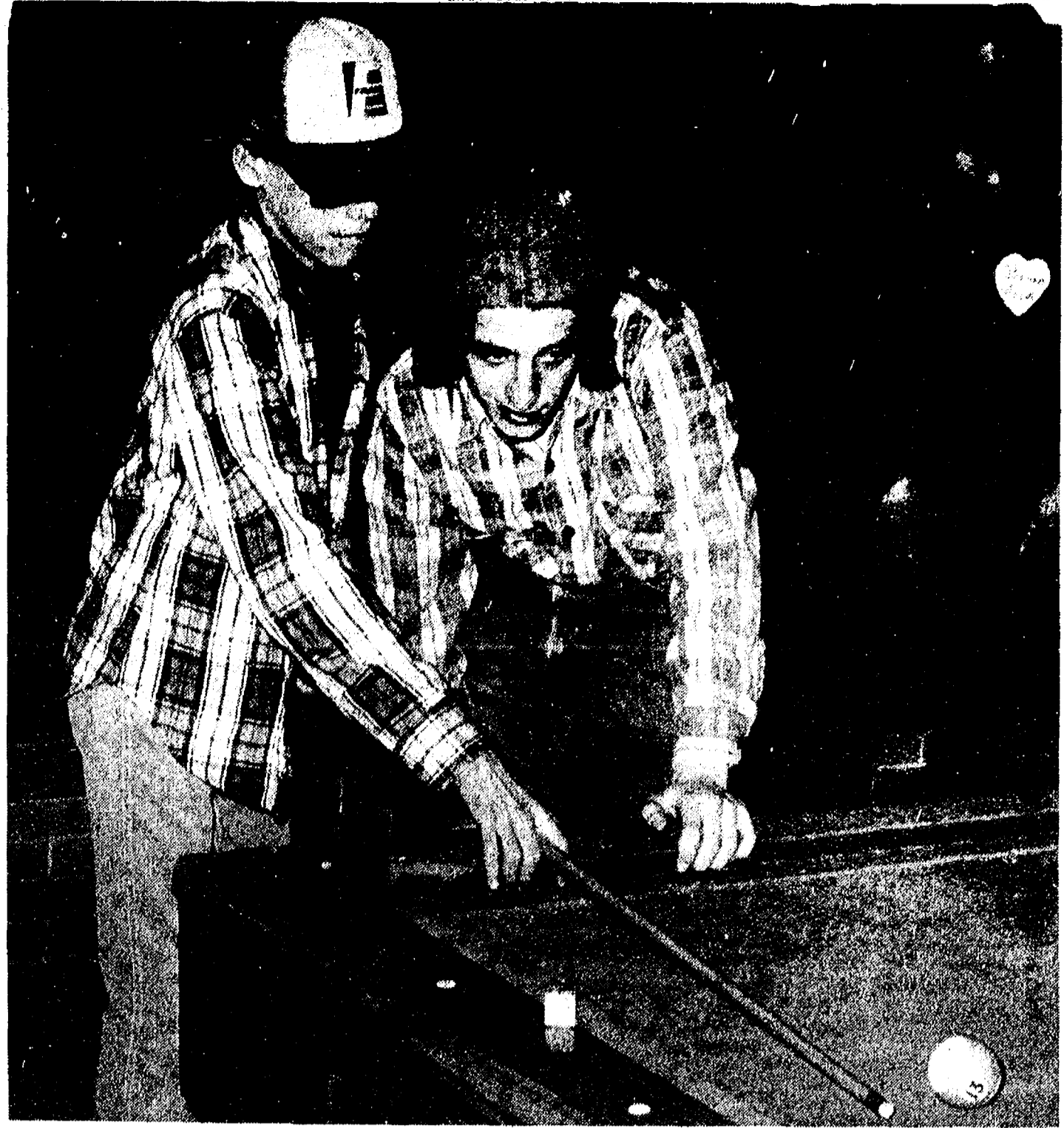
Subscribe today to The Standard.

**We build special storage buildings.**

Cuckler pre-engineered, all-steel buildings for storage on the farm, business and industry. Wide variety of types and sizes. Let us help you plan and build for your present and future needs.

**Cuckler**  
 AUTHORIZED BUILDER

**DICK POLJAN**  
 13875 MCKINLEY  
 CHELSEA, MICH.  
 Ph. 475-2921



A QUICK POOL LESSON was just one of the happy times shared last Tuesday, March 25, at an Easter party hosted by the Jesus Christ Christian Club at Cassidy Lake Technical School for

the boys of St. Louis School. The party featured a chicken dinner together with pool, bowling and basketball, capped by a visit from the Easter Bunny himself and an Easter egg hunt.

**Poison Prevention May Avert Tragedy**

"Your child is in the emergency room of the hospital. It is a case of accidental poisoning. He will be okay this time, but the next time..."

This could be you, and even more tragic, this could have been prevented. 85% of all poisonings in children under five are accidental. These poisonings can be prevented. It is your responsibility as parents to help prevent accidental poisonings.

Terryl R. Ensign, president of the Michigan Pharmacists Association, offers some timely advice on how you can prevent a tragedy. "The two most important factors in poison prevention are education and removal of potential hazards."

In very small children, before the child is old enough to climb, the most important method of poison prevention is to remove all potential poisons from the child's reach. Once a child is old enough to climb, virtually anything that is unlocked is within reach.

Both adults and children must learn what can be poisonous in their own homes. The most obvious dangers are medications and cleaning or painting solutions. Many other items are also very dangerous to small children such as vitamins, cosmetics, nail polish and nail polish remover, perfumes, non-prescription medications, cough and cold preparations, and alcohol, to name a few.

Children love to do things with their parents. Go through your home and identify potential poisons with all the family members and discuss why these items should not be consumed.

Your pharmacist will be glad to discuss accidental poisoning with you and the importance of knowing the number of your poison information center. Having the number of your poison information center by each phone in your home can save precious time in the event of an actual poisoning. The poison information center may instruct you to use syrup of ipecac and activated charcoal. For this reason it is important for every household to have these in the medicine chest.

Telephone your club news to 475-1371

**CASH FROM BOXTOPS!**

Save 1/3 on groceries. Turn boxtops, labels into cash, or free food coupons. Bulletin has over 100 different offers each month. Subscribe now - Save now!! 6 months \$4 - Yearly, \$7.

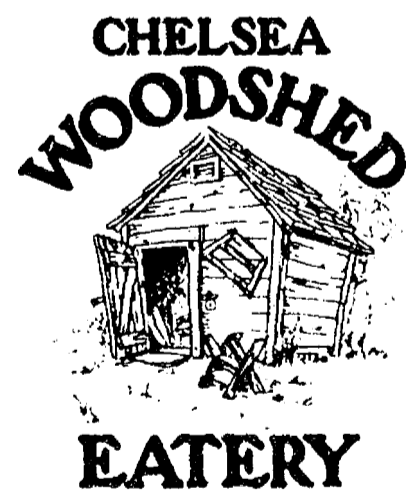
REALISTIC REFUNDING  
 1196 SCHEURMAN  
 ESSEXVILLE, MI 48732

NAME \_\_\_\_\_  
 ADDRESS \_\_\_\_\_

The Chelsea Woodshed Presents:  
**All You Can Eat Specials**

- Monday** - Steamed Alaskan Crab Legs Served with green salad & shed fries **\$9.25 per person**
- Tuesday** - Deep Fried Battered Chicken Served with green salad & shed fries **\$5.50 per person**
- Wednesday** - Ocean Fresh Battered Fish Served with green salad & shed fries **\$5.75 per person**

Specials Available 5 p.m. to 10 p.m.



113 S. Main  
 Chelsea, Michigan  
 (Just 15 minutes from Ann Arbor)  
 Call 475-1922

Monday - Thursday 7-10  
 Friday and Saturday 7-11  
 Closed Sundays

VISA MasterCard Discover Cards Welcome



**WOLVERINE TOUGH OUTSIDE  
 PURE COMFORT INSIDE**

We bred the spirit of the beast into every pair of these Wolverine® Boots.

Made of rugged pigskin that is stronger, more scuff-resistant than cowhide. Pigskin actually "breathes" letting in fresh air. And with deep cushion insoles you'll work in comfort whatever the job demands.

Store Hours: Mon. thru Sat., 8 a.m. to 5:30 p.m.

**STRIETER'S**  
 MEN'S WEAR  
 Since 1914

**WOLVERINE**  
 Boots & Shoes



**550 GRANT ST.**  
 (Village of Chelsea)

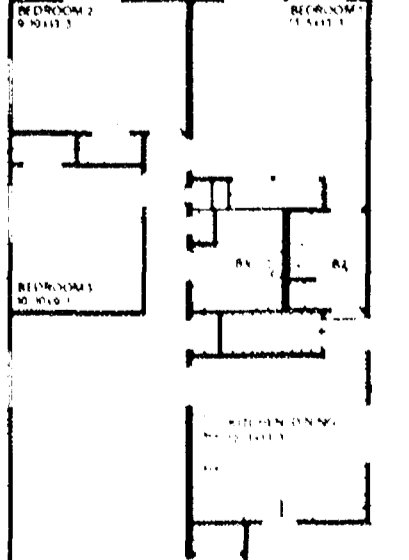
Other homes available from \$63,900 to \$75,900 with super terms!

Convenience and comfort keynote this home with its standard 1 1/2 baths, a favorite feature of the growing family. Three large, well-planned bedrooms help, too. Efficient kitchen-dining area turns meal preparation and serving into a happy time.

CALL TODAY FOR AN APPOINTMENT

**WEBER HOMES**  
 475-2828 475-8348 475-9258

**11%**  
 LAND CONTRACT AVAILABLE



ACTIVE HOMES DEALER

Ads Taken Until 5 p.m. Monday

PUT IT IN THE WANT ADS FOR RESULTS

Just Phone 475-1371

Washtenaw County's Busy Marketplace . . . Quick, Economical Results . . . Give 'em a try!

Automotive 1 HONDA CB 125 - 1,600 miles. Excellent condition. \$395. Must sell. Ph. 426-3934 after 5. x43

BODY SHOP COMPLETE FULL TIME Estimates Available PALMER FORD 222 S. Main 475-1301 401f

SEE TOM DAULT at Rampy Chevrolet for your best deal in new or used cars and trucks. Ph. 663-3321 or 475-2830

USED CAR SALE CARS 1979 FORD Club Wagon Was \$7895. Now \$1295

TRUCKS 1979 FORD 1/2-ton Was \$4995. Now \$4695

PALMER FORD CHELSEA 475-1301 x43

Factory Officials Cars '78 VOLARE 4-dr. 6-cyl., auto., p.s., p.b., air, 40" 697 miles \$4695

Your Approval is the cornerstone of our business Staffan Funeral Home "Funeral Directors for Four Generations" 124 PARK STREET PHONE 475-1444

Automotive 1 Used Trucks '75 RAMCHARGER 4x4, 6-cyl., auto., p.s., p.b. \$2395

Quality Used Cars '77 PLYMOUTH Fury Custom 4-dr. 318, auto., p.s., p.b., air, 26,539 miles \$2195

Village Motor Sales, Inc. CHRYSLER - DODGE PLYMOUTH - DODGE TRUCKS

FOR SALE - 1975 Buick LeSabre, power steering, power brakes, 4 door, new shocks and exhaust. \$1,000. Ph. 475-9101. Eves: 475-1469. x26if

Complete Body Shop Service FREE ESTIMATES Contact Walter Steinhilb Formerly of Westland Collision

Farm 2 JOHN DEERE GRAIN DRILL, 13 run. Good fertilizer and seeder. Also, air compressor on wheels, \$75. Ph. 475-2403. x43

Visit Our WICK MODEL HOME OPEN HOUSE At 5201 Brooklyn Rd. - M-50 - Jackson Mon.-Thurs., 1-5; Sat. & Sun., 2-5

SEE US for your bulk lawn seed needs. Two new mixtures available this year. Cole's Elevator Co., Inc., Gregory (313) 498-2735. x51-9

Farm 2 HAROLD TRINKLE & SONS 947 N. STEINBACH RD., DEXTER. Ph. 475-8992

HAY - STRAW SEED CORN Golden Harvest Funk's G - Jacques

Recreation Eqpt. 3 Planning A Party? Reception or Special Get-Together?

Garage Sale 4a TIME TO CLEAN the attic! Lots of rugs, lamps, 2 kitchen cupboards, some furniture and lots more!

For Sale 4 1972 KAWASAKI 175cc Enduro, \$250. Ph. 475-2403. x43

VACUUM CLEANERS Authorized Electrolux sales and service. James Cox 428-8444, or 428-8686

SEE US for transit mixed concrete. Klump Bros. Gravel Co. Phone Chelsea 475-2530, 4920 Loveland Rd., Grass Lake, Mich. x40if

EASTER PLANTS LILLIES - DAFFODILLS TULIPS - HYACINTHS VIOLETS - MUMS March 27-until Easter SYLVAN FLOWER SHOP 716 W. Middle 475-1561

For Sale 4 FRIGIDAIRE ELECTRIC RANGE - 4-burner, \$55. 2-bottom plow, 3-pt. hitch, \$250. Ph. 475-2575. x43

FREE PACKING BOXES and other packing material. 19345 Bush Rd. Ph. 475-2034. x44

Garage Sale 4a TIME TO CLEAN the attic! Lots of rugs, lamps, 2 kitchen cupboards, some furniture and lots more!

Antiques 4b FURNITURE - GLASSWARE PRIMITIVES - GENERAL LINE

Real Estate 5 THORNTON 475-9193 BEAUTIFUL COLONIAL - 4 bedrooms. Fireplace. Landscaped lot with many trees.

THORNTON, INC. REALTOR Darla Bohlender 475-1478

FOR SALE IDEAL COMMERCIAL PROPERTY IN DEXTER (with River Frontage) BUILDINGS POLE BARN

FOR SALE IDEAL COMMERCIAL PROPERTY IN DEXTER (with River Frontage) BUILDINGS POLE BARN

Real Estate 5 Pierson & Riemenschneider 475-9101 LAKE PROPERTY CLEAR LAKE - 3-bedroom home on beautiful wooded lot.

UNDER 50 10 MINUTES from Chelsea. 2-story older home, 3 bedrooms, full basement, 1-car garage.

Pierson & Riemenschneider Eves: Marilyn Chasteen 475-2934

FRISINGER NEW LISTING - 10 acres, surrounded by State Land on 2 sides.

Real Estate 5 THORNTON 475-9193 BEAUTIFUL COLONIAL - 4 bedrooms. Fireplace. Landscaped lot with many trees.

FRISINGER REALTY CO. Chelsea 475-8681 935 S. Main St.

WATERLOO REALTY "HAPPY EASTER" We will reopen Mon. April 7, 1980

FOR SALE Approximately 19 acres, 3-bedroom house, barn, 3-car garage. Near Gregory. For further information inquire at 109 Main St., Gregory. x43-3

Real Estate 5 Wicks Model Home OPEN HOUSE at 5201 Brooklyn Rd. (M-50 S.E. of Jackson)

Callaway Const. 1-517-764-4400 or 1-517-563-2930 x49if

SPEAR & ASSOC. MANN REALTORS ENERGY EFFICIENT RANCH - Brand new 3-bedroom home, living room w/fireplace.

SPEAR & ASSOC. MANN REALTORS Manchester 428-8388 Jim Mann - 428-8074

Animals, Pets 6 WOODSTOCK KENNELS 18531 Bush Rd. Ph. 475-1794

Lost and Found 7 COON HOUND LOST in Chelsea-Dexter area. Body white, face light brown and white.

Help Wanted 8 HOUSEKEEPER WANTED to help working couple keep lives in order. 3-weekly general housekeeping; 1 day monthly major effort.

RN'S, LPN'S Needed Immediately TOP WAGES FLEXIBLE HOURS Choice of Assignments

BookCrafters, Inc. is now taking applications for entry level work. Interested applicants may apply in person at 140 Buchanan Chelsea, Mich. Equal Opportunity Employer

Help Wanted 8 SECURITY GUARDS BURNS International is a good place to work. We could list all the fringe benefits and the pay scale, but you could read that in all the ads.

BURNS SECURITY 22150 Greenfield Oak Park, MI 48237 or call collect: 968-2894. x46-4

WAITRESS WANTED, full- or part-time. Apply in person to the manager Country Kitchen Restaurant, 8128 Main St., Dexter. x29if

HELP WANTED - Full-time summer help and possible part-time. Apply at Dancer's, 8060 Main St., Dexter. x43

RN and LPN FULL AND PART TIME RN and LPN needed on all shifts. Good wages and many benefits. Pleasant, modern working conditions.

Baby Sitter 9 WILL BABYSIT in my home. Ph. 475-1074. x45-4

Wanted 10 LARGE HOUSE wanted to rent a half mile from Chelsea High school. Needed by June. Ph. 981-1750. x51-9

For Rent 11 CHELSEA ROD & GUN CLUB Hall Rental - For information contact Elwood Keezer, 475-7510, evenings and week-ends. x43

CAR RENTAL by the day, week- and, week or month. Full insurance coverage, low rates. Call Lyle Christwell at Palmer Motor Sales, 475-1301. x25if

# LITTLE WANT ADS! BIG PLUSES FOR BIG RESULTS!

## For Rent 11

**FOR RENT** — Large three bedroom home, Natural gas heat, country kitchen, spacious living room. Knotty pine enclosed porch. Two car garage. Large shaded yard. \$425 per month. Security deposit. No pets. Central location in Village of Grass Lake. Immediate occupancy. Ph. 475-8674. x15if

**STORE FRONT BUILDING** located on downtown Main St., Dexter. Prime location. Parking. 4,400 sq. ft. plus. Ph. 426-4695. x18if

**LAKEFRONT 3-BEDROOM HOUSE** with fireplace, on chain of seven lakes. Nine miles north of Chelsea. Many extras. Ph. 485-2869. x33if

**2 ROOMS FOR RENT** and share a lakefront home with a scenic view, friendly atmosphere, hardwood floors, fireplace. \$145 per person, negotiable. Heat included. For two females or two males or couple. Ph. 475-7494. x34if

**APARTMENT** to non-smoking couple with no pets. Downstairs. South of Chelsea. Utilities furnished. Ph. 475-8334. x39if

**FARM HOUSE FOR RENT** — Chelsea schools. 3 bedrooms, 2 baths. Reference required. Immediate session. Call 475-7939. x43if

**HOUSE FOR RENT** — Adults, no pets. In the Grass Lake area. \$240 per month plus deposit. 1-(517) 522-5253. x43

**COUNTRY APARTMENT** in the Grass Lake area. 5 rooms, heat furnished. Adults, no pets. \$350 plus deposit. 1-(517)-522-5253. x43

## Misc. Notice 12

**SEE PACKING BOXES** and other packing material. 19345 Bush Rd. Ph. 475-2034. x44

**PICK-UP** a free copy of Bible references to comfort. Ph. 426-4982. M. Smith. x25if

**RUNNING OUT OF ROOM?** Store your "extras" in my secure heated, all-steel building. Pay just for the space you use. Ph. 475-8892. x35if

**PIANO LESSONS** for adult beginners or intermediate, in my home. Experienced teacher. Call Lois Hall. 475-9225. x45-4

**NEED MEETING SPACE?** Meeting room with kitchen facilities for private functions in Dexter. 10-100 people. Dexter Masonic Temple Association. Call Doug. 665-5003. x43

**4-H Teen Leader Association** of Washtenaw County is offering their services—for yard work, cleaning and clowning for business promotion until July 1st. Phone Linda Bristol. 475-2266. x3-14

## Bus. Services 13

**FITZSIMMONS EXCAVATING**  
SAND - GRAVEL  
TOP SOIL & FILL  
BACK HOE AND BULDOZER WORK  
PHONE 475-2010 or 475-9492  
14165 N. TERRITORIAL RD. C. x43if

**CORRECTIVE HORSESHOEING** and trimming. Mike Brisbois. Ph. 565-3036. x45if

**Chelsea Plumbing & Heating**  
QUALITY WORKMANSHIP  
REASONABLE RATES  
Specializing in  
—New Construction  
—Remodeling  
—Hydronic Heat  
GAIL SHEARS  
Licensed Journeyman  
GARLAND DE YOE  
Licensed Master  
Ph. 475-1037 17if

**Window Screens Repaired**  
Reasonable rates

**Chelsea Hardware**  
110 S. Main Ph. 475-1121 30if

**Floor Covering Is Our Business**  
TILE—SARLARIAN—HARDWOOD  
CARPET—INSTALLATION—REPAIRS  
FREE ESTIMATES — 475-8621  
Merkel  
Home Furnishings 4if

—Custom Built Homes  
—Oh! We Remodel too  
—You can count on us  
—No Job Too Small  
—Trim Inside and Out  
—Rough-in Only if  
—You Want to Finish  
—Cladding Aluminum, 5" Gutters  
—Immediate Attention  
DALE COOK & CO.  
Estimates, Free  
BUILDERS  
Please call  
475-9153  
DALE COOK 17if

## Bus. Services 13

**HANDYMAN DAN**  
Home Repairs  
(517) 851-8888 15if

**Your Wedding deserves the very best in Wedding Flowers**  
We specialize in a complete line of wedding flowers and wedding accessories to fit your budget. Come in or call us for an appointment.

**Chelsea Greenhouse**  
7010 Lingane Rd., Chelsea  
475-1353 or 475-1354 x39if

**JIM W. FRENCH**  
Small Dump Trucking  
SAND - GRAVEL - STONE  
Ph. Chelsea 475-1173 21if

STEP UP TO  
**KOZMA CONSTRUCTION**  
And Step Down In Price  
LICENSED BUILDER  
FREE ESTIMATES  
COMPLETE CONSTRUCTION SERVICES  
CALL  
LEN KOZMA  
475-7452 29if

SAND GRAVEL  
**KLINK EXCAVATING**  
Bull Dozer — Backhoe — Road Work — Basements — Trucking — Crane Work — Top Soil — Demolition — Drainfield — Septic Tank — Trenching, 5" up  
Industrial, Residential, Commercial  
CALL 475-7631 13if

**LAWN MAINTENANCE SNOW PLOWING SMALL LANDSCAPING**  
RICHARD SMITH  
475-8984 after 5 p.m. 10if

**CEMENT WORK**  
PATIOS - DRIVEWAYS - PORCHES  
SIDEWALKS - WOOD DECKS  
Experiences — Free Estimate  
PHONE 428-7270 x15if

**LEONARD REITH**  
Master Plumber  
Licensed Electrician  
Hot Water Heat  
18238 N. Territorial Rd.  
Chelsea, Mich. 48118  
Phone: 475-2044 52if

**When Winter Winds Blow Be Protected By A New Layer of Fiberglass Insulation**  
NOW ON SALE  
3 1/2" unfaced — 15c sq. ft.  
\$20.16 a bag  
6 1/2" unfaced — 18c sq. ft.  
\$32.36 a bag  
8 1/2" kraft faced — 34c sq. ft.  
\$38.10 a bag  
Prices include Tax  
CALL 475-7643  
Winter's A-Comming! 8if

## Bus. Services 13

**Janitorial Service**  
Daily, Weekly, Monthly  
WE DO IT ALL  
SPECIAL on carpeting, furniture and drapery cleaning. Also painting and drywall.  
WRITTEN GUARANTEE  
FREE DEMONSTRATION  
Call About Out  
FREE STEAK DINNER  
973-1499 x47if

**FURNITURE** Re-Gluing and repair. Call Duane Hall, 475-8130 after 7 p.m. -43-2

**LITTLE WACK EXCAVATING**  
Basement — Drainfields  
Bulldozing — Digging  
Snow Removal — Tree Removal  
LICENSED AND INSURED  
Paul Wackenhut  
Ph. 428-8025 52if

**PIANO TUNING** and repair. Qualified technician. Call Ron Harris, 475-7134. -10if

**PATCHING and PLASTERING.** Call 475-7489. 33if

**R. L. BAUER Builders**  
LICENSED and INSURED  
Custom Building  
Houses — Garages  
Pole Barns  
Roofing — Siding  
Concrete Work  
FREE ESTIMATES  
Call 475-1218 31if

**Why hire THREE contractors when ONE will do?**  
**HILLTOP, INC.**  
PLUMBING  
HEATING  
ELECTRICAL  
**WE DO IT ALL**  
Serving Washtenaw County for the 25th year.  
475-2949  
8316 Werkner - Chelsea x38if

**McCulloch**  
Portable Generators  
Chain Saws  
WE SELL, SERVICE - SHARPEN AND TRADE  
Chelsea Hardware 21if

**Chelsea Building Maintenance Co.**  
7215 Jackson Rd.  
Ann Arbor  
Ph. 668-0585  
PLUMBING CONTRACTORS  
INDUSTRIAL - COMMERCIAL  
RESIDENTIAL  
NEW & REPAIR WORK  
A. O. Smith Water Heaters  
Bruner Water Conditioning Dealer  
Beginning Feb. 1  
Serving the Chelsea, Dexter and surrounding areas.  
Bill Colvin  
and  
Henri vanderWaard x33if

**BUILDING A NEW HOME?**  
Call me for a free estimate on your poured foundation.  
Mel Jones 475-1707 x34if

**RON MONTANGE CONSTRUCTION**  
(RJM, INC.)  
—Full carpentry services (rough and finish)  
—Additions, remodeling and repairs  
—Concrete  
—Roofing and siding  
—Cabinets and Formica work  
—Metal farm buildings  
—Grain storage bins  
—Excavating and trenching  
QUALITY WORKMANSHIP  
FREE ESTIMATES  
Ph. 426-2585  
or  
475-1080 19if

## Bus. Services 13

**CAN'T AFFORD A NEW CAR? NO PROBLEM!**  
Have TIDY CAR "Tuff 'n Tidy" treatments on Ole Bessie and you'll be amazed and delighted with your NEW CAR!  
Call 475-2952 or stop by  
3663 Chelsea-Manchester Rd. x41

**INCOME TAX FARM, BUSINESS OR PERSONAL**  
Started in Chelsea in 1953. Now in Ann Arbor.  
**CHELSEA BOOKKEEPING AND TAX SERVICE**  
Room 202  
201 S. Main St., Ann Arbor  
By Appointment  
PHONE 769-0924 x43-6

**SUNSET BUILDING COMPANY**  
Specializing in  
Additions/Remodeling  
Kitchens/Cabinets  
Wood or Concrete  
Patios and Porches  
Repair Work  
No Job Too Small  
Give US A Call  
475-2822 39if

**SNOW PLOWING** — Residential, commercial. Duane Dorr, 475-8365. -43

**ALUMINUM SIDING, trim and gutters.** High quality work. Ph. 426-4502. x45-4

**REMODELING UNLIMITED** — All types of remodeling, renovation, additions, repairs and electrical work. Ph. (313)498-3276. x52if

**J. R. CARRUTHERS**  
LICENSED  
RESIDENTIAL BUILDER  
CUSTOM HOMES  
ADDITIONS/FIREPLACES  
PATIOS  
ROOFING/SIDING/REPAIRS  
475-7234  
CHELSEA 30if

## Financial 14

**PRIVATE PARTY.** Purchasers land contracts and mortgages. Eves. only 475-1469. x21if

**LAND CONTRACTS PURCHASED** — Any size, any property type. Courteous and reliable service. Call Dan Duncanson, Ann Arbor Real Estate Co., 668-8595. 33if

## Card of Thanks 16

**A THANK YOU**  
I want to thank all of my friends and relatives for remembering me and helping out during my hospital stay, especially my daughter and son-in-law, Mike and Jan Sweet, and my 8 grandchildren. The visits, flowers, and prayers are greatly appreciated. Thanks to the Senior Citizens and Nutrition Meals people for the cards, also to Rev. Father Philip Dupuis for his visits. This thoughtfulness will be remembered always.  
Mrs. Del Erickson.

## In Memoriam 17

**IN MEMORY OF VIRGINIA ANN LINDSTROM**  
In memory of my mother, daughter and sister who left us one year ago, April 6th. Blessed be the tie that binds. The fellowship of kindred minds is like to that above. When we are called upon to part it gives us inward pain. But we are still joined in heart and hope to meet again. Sadly missed by sons, Rick and Randy, Mom and Dad, sister Spring Marie, and brothers Bill and Jim.

**IN MEMORIAM**  
In memory of Alfred Titus, who passed away seven years ago, April 4, 1973. He had no time to say farewell, he said goodbye to none of us and his voice was silent, for God wanted him to come home where he would suffer no more. Missed by his sister, Mrs. Frank Reed and all the rest of the family.

**CASH FOR LAND CONTRACTS**  
Any type property anywhere in Michigan 24 Hours  
Call Free 1 800 292 1550  
First National Acceptance Co

## Legal Notices 18

**MORTGAGE SALE**—Default has been made in the conditions of a mortgage made by John A. Spannos and Catherine M. Spannos, husband and wife to Michigan National Bank-West Oakland, Mortgage, Dated February 27, 1979, and recorded on March 7, 1979, in Liber 1097, on page 800, Washtenaw County Records, Michigan, on which mortgage there is claimed to be due at the date hereof the sum of Twelve Thousand Two Hundred Forty-One and 43/100 Dollars (\$12,241.43), including interest at 14% per annum.  
Under the power of sale contained in said mortgage and the statute in such case made and provided, notice is hereby given that said mortgage will be foreclosed by a sale of the mortgaged premises, or some part of them, at public venue, at the westerly entrance to the County Building in Ann Arbor, Michigan, at 10:00 o'clock A.M., Local Time, on THURSDAY, APRIL 24, 1980.  
Said premises are situated in the Township of Salem, Washtenaw County, Michigan, and are described as follows: Commencing at the Northwest corner of Section 10, Town 1 South, Range 7 East, Salem Township, Washtenaw County, Michigan; thence Easterly along the North line of Section 163 feet; thence South 1336 feet, thence West 163 feet to the North line of said section, 163 feet; thence North 3° 58' East 1336 feet to the Place of Beginning, Salem Township, Washtenaw County, Michigan. Commonly Known As: 7902 W. Seven Mile Road.  
During the six months immediately following the sale, the same may be redeemed.  
Dated: March 20, 1980.  
MICHIGAN NATIONAL BANK- WEST OAKLAND  
Mortgage  
ZWEIG AND HARKNESS, P.C.  
Attorneys  
3000 Town Center, Suite 2470  
Southfield, MI 48075  
March 20-27-Apr. 3-10-17

**MORTGAGE SALE**—Default having been made in the terms and conditions of a certain mortgage made by Donald O. O'Duntan and Deloris Jean O'Duntan (a/k/a) Deloris J. O'Duntan, his wife, of Pleasant, Washtenaw County, Michigan, Mortgageors to STANDARD FEDERAL SAVINGS AND LOAN ASSOCIATION, A Federal Association, of Troy, Oakland County, Michigan, Mortgage dated the 6th day of July, 1979, and recorded in the office of the Register of Deeds, for the County of Washtenaw and State of Michigan, on the 12th day of July, 1979, in Liber 1716 of Washtenaw County Records, on Page 419, and which mortgage WAS RE-RECORDED on January 4, 1980 in Liber 1744, Page 55 of Washtenaw County Records, in which mortgage there is claimed to be due, at the date of this notice, for principal and interest, the sum of Thirty Eight Thousand Six Hundred Twenty and 28/100 Dollars (\$38,620.28).  
And no suit or proceedings at law or in equity having been instituted to recover the debt secured by said mortgage or any part thereof, Now, therefore, by virtue of the power of sale contained in said mortgage, and pursuant to the statute of the State of Michigan in such case made and provided, notice is hereby given that on Thursday the 8th day of May, 1980, at 10:00 o'clock A.M. Local time, said mortgage will be foreclosed by a sale at public auction, to the highest bidder at the West entrance to the Washtenaw County Building in the City of Ann Arbor, Washtenaw County, Michigan, that being the building where the Circuit Court for the County of Washtenaw is held, of the premises described in said mortgage, or so much thereof as may be necessary to pay the amount due, as aforesaid, on said mortgage, with interest thereon at eleven and one quarter per cent (11 1/4 per cent) per annum and all legal costs, charges and expenses, including the attorney fees allowed by law, and also any sum of sums which may be paid by the undersigned, necessary to protect its interest in the premises. Which said premises are described as follows: to-wit: Commencing at that certain piece or parcel of land situated in the Township of Superior in the County of Washtenaw and State of Michigan, and described as follows: Lot One Hundred Thirty One, (131), Woodland Acres Number 2, as recorded in Liber 17 of Plats, Pages 39 and 40, Washtenaw County Records.  
During the six months immediately following the sale, the property may be redeemed.  
Dated at Troy, Michigan, February 27, 1980.  
STANDARD FEDERAL SAVINGS AND LOAN ASSOCIATION, A Federal Association  
Mortgage  
DYKEMA, GOSSETT, SPENCER, GORDON & TRIGG  
Attorneys for Mortgagee  
2401 West Big Beaver Rd.  
Troy, Michigan 48064  
March 6-13-20-27-April 3

**MORTGAGE SALE** — Default having been made in the terms and conditions of a certain mortgage made by John Spannos and Catherine Spannos, (AKA - Katherine Spannos) his wife, of Salem Township, Washtenaw County, Michigan, Mortgageors to STANDARD FEDERAL SAVINGS AND LOAN ASSOCIATION, A Federal Association, of Troy, Oakland County, Michigan, Mortgage, dated the 6th day of December, 1972, and recorded in the office of the Register of Deeds, for the County of Washtenaw and State of Michigan, on the 26th day of December, 1972, in Liber 1423 of Washtenaw County Records, on Page 729, on which mortgage there is claimed to be due at the date of this notice, for principal and interest, the sum of TWENTY-TWO THOUSAND EIGHT HUNDRED AND SIXTYEEN and 86/100 Dollars (\$22,816.86).  
And no suit or proceedings at law or in equity having been instituted to recover the debt secured by said mortgage or any part thereof, Now, therefore, by virtue of the power of sale contained in said mortgage, and pursuant to the statute of the State of Michigan in such case made and provided, notice is hereby given that on Thursday the seventeenth of April, 1980, at 10:00 o'clock A.M. Local Time, said mortgage will be foreclosed by a sale at public auction, to the highest bidder at the West entrance to the Washtenaw County Building in the City of Ann Arbor, Washtenaw County, Michigan (that being the building where the Circuit Court for the County of Washtenaw is held), of the premises described in said mortgage, or so much thereof as may be necessary to pay the amount due, as aforesaid, on said mortgage, with the interest thereon at Seven and one quarter percent (7 1/4%) per annum and all legal costs, charges and expenses, including the attorney fees allowed by law, and also any sum or sums which may be paid by the undersigned, necessary to protect its interest in the premises.  
Which said premises are described as follows: All that certain piece of parcel of land situate in the Township of Salem in the County of Washtenaw and State of Michigan, and described as follows: to-wit: Commencing at the Northwest corner of Section 10, Town 1 South, Range 7 East, Salem Township, Washtenaw County, Michigan; thence Easterly along the North line of Section 163 feet, thence South 1336 feet, thence West 163 feet to the North line of said section, 163 feet; thence North 3° 58' East 1336 feet to the Place of Beginning, Salem Township, Washtenaw County, Michigan.  
During the twelve (12) months immediately following the sale, the property may be redeemed.  
Dated at Troy, Michigan, March 10, 1980.  
STANDARD FEDERAL SAVINGS AND LOAN ASSOCIATION, A Federal Association  
Mortgage  
DYKEMA, GOSSETT, SPENCER, GORDON & TRIGG  
2401 West Big Beaver Rd.  
Troy, Michigan 48064  
Attorneys for Mortgagee  
March 13-20-27-April 3-10

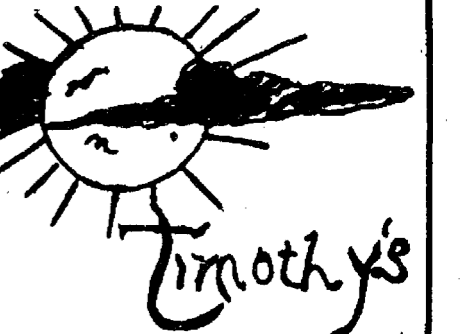
## Legal Notices 18

**NOTICE OF MORTGAGE SALE**—Default having been made in the terms of a mortgage made by JIMMY G. JOHNSON and JULIA E. JOHNSON, his wife, to ASSOCIATED MIDWEST INCORPORATED dated February 27, 1973, and recorded March 2, 1973, in Liber 1430, Page 884, Washtenaw County Records, and assigned by said mortgage to FEDERAL NATIONAL MORTGAGE ASSOCIATION, a corporation organized and existing under the laws of the United States by assignment dated February 27, 1973, and recorded March 30, 1973, in Liber 1433, Page 865, Washtenaw County Records, on which mortgage there is claimed to be due at the date thereof for principal and interest, the sum of \$20,180.62.  
Under the power of sale contained in said mortgage and pursuant to the statute in such case provided, notice is hereby given that on the 10th day of April, 1980, at 10 o'clock a.m. local time, said mortgage will be foreclosed by a sale at public auction to the highest bidder at the West entrance of the Washtenaw County Building in the City of Ann Arbor, Michigan, Washtenaw County, Michigan, that being the place where the Circuit Court of said County is held, of the premises described in said mortgage, or so much as may be necessary to pay the amount due with interest at 8.25 per cent per annum and all legal costs and charges.  
Said premises are located in the Township of Ypsilanti, Washtenaw County, Michigan, and are described as: Lot 25, excepting therefrom the Northwesterly 11.5 ft. and also excepting therefrom the Southeasterly 10.0 ft., Washtenaw Concourse Number 3, a part of the Northeast 1/4 of Sec. 3, and a part of the Northwest 1/4 of Sec. 7, T. 3 S., R. 7 E., Ypsilanti Township, Washtenaw County, Michigan, according to the plat thereof as recorded in Liber 14 of Plats, Pages 21 and 22, Washtenaw County Records.  
The redemption period is six months from the time of sale.  
FEDERAL NATIONAL MORTGAGE ASSOCIATION, a corporation organized and existing under the laws of the United States.  
LEITHAUSER AND LEITHAUSER, P. C.  
18301 E. 8 Mile Road, Suite 215  
East Detroit, MI 48021  
Attorneys for said Assignee  
March 6-13-20-27-Apr. 3

## Legal Notices 18

**STATE OF MICHIGAN**  
The Probate Court for the County of Washtenaw  
File No. 71990  
Estate of HELEN L. LINDEMANN, Deceased.  
Address of Decedent: Village of Chelsea, Washtenaw County, Michigan.  
Date of Death: December 25, 1979.  
TAKE NOTICE: On January 17, 1980 at 9:00 A.M., in the Probate Courtroom, Washtenaw County Building, Ann Arbor, Michigan, before the Honorable Rodney E. Hutchison, Judge of Probate a hearing was held on the petition of Amos Binder, the will of the deceased dated May 20, 1966 was admitted to probate and administration of the estate was granted to Amos Binder.  
Creditors of the deceased are notified that all claims against the estate must be presented said Amos Binder at 3533 Academy, Dearborn, Michigan 48124, and a copy filed with the court on or before June 1, 1980.  
Notice is further given that the estate will be assigned to persons entitled thereto.  
Take further notice that a determination of heirs will be made on June 3, 1980 at 9:00 a.m. at the Washtenaw County Probate Court.  
AMOS BINDER  
Petitioner  
3533 Academy  
Dearborn, Michigan 48124  
Dated: March 24, 1980  
KEUSCH AND FLINTOFT  
Attorney for Petitioner:  
BY: JOHN P. KEUSCH, (P-15927)  
121 South Main Street  
Chelsea Michigan 48118  
Phone: 313/475-8671.

April 3



professional touch without the cost  
catering - barbecues - private parties  
50 - 500  
tim orlbring 475-2570

# SPECIALS

1-LB. PKG. ECKRICH  
**Hot Dogs . . . . \$1.43**

8-OZ. BOX NABISCO  
**Snack Crackers . . . . 69c**

46-OZ. CAN ASSORTED FLAVORS  
**Hi-C Fruit Drink . . . . 59c**

3-LB. BOX MUELLER'S  
**Macaroni or Spaghetti . . . . \$1.43**

NO. 300 CAN JOAN OF ARC  
**Kidney Beans . . . 2 for 53c**

## KUSTERER'S FOOD MARKET

DIAL 475-2721 WE DELIVER


**What's worse than having your \$45,000 house burn to the ground?**

**Having an insurance policy that only pays \$25,000.**

Every year, inflation and rising property values increase the value of your home. And make it that much more expensive to replace should something happen to make it a total loss.

But if you have an Auto-Owners homeowners policy with Adjusted Value Endorsement, you're protected. Because this modern Auto-Owners policy is designed to keep pace with rising values automatically.

If you aren't covered by Auto-Owners . . . well, maybe you should be replacing your present insurance. Let us fill you in. Before you have to replace your home.



## Auto-Owners Insurance

You can't find a better name for homeowners insurance

# MAYER AGENCY

of Wenzler-Kleinschmidt Agency, Inc.  
Phone 475-8689 Chelsea, Michigan

**Legal Notices 18**

**MORTGAGE SALE** - Default having been made in the terms and conditions of a certain mortgage made by Curtis L. Holt, a married man, of Ypsilanti, Washtenaw County, Michigan, mortgagor to STAN-DARD FEDERAL SAVINGS AND LOAN ASSOCIATION, A Federal Association, of Troy, Oakland County, Michigan, mortgagee dated the 25th day of October, 1978, and recorded in the office of the Register of Deeds, for the County of Washtenaw and State of Michigan, on the 6th day of November, 1978, in Liber 1681 of Washtenaw County Records, on Page 256, on which mortgage there is claimed to be due, at the date of this notice, for principal and interest, the sum of Twenty Three Thousand Seven Hundred Thirty-Two and 61/100 Dollars (\$23,732.61); And no suit or proceedings at law or in equity having been instituted to recover the debt secured by said mortgage or any part thereof. Now, therefore, by virtue of the power of sale contained in said mortgage and pursuant to the statute of the State of Michigan in such case made and provided, notice is hereby given that on Thursday the 15th day of May, 1980, at 10:00 o'clock A.M. Local Time, said mortgage will be foreclosed by a sale at public auction to the highest bidder at the West entrance to the Washtenaw County Building in the City of Ann Arbor, Washtenaw County, Michigan (that being the building where the Circuit Court for the County of Washtenaw is held), of the premises described in said mortgage, or so much thereof as may be necessary to pay the amount due, as aforesaid, on said mortgage, with the interest thereon at Nine and three quarters percent (9-3/4%) per annum and all legal costs, charges and expenses, including the attorney fees allowed by law, and also any sum or sums which may be paid by the undersigned, necessary to protect its interest in the premises. Which said premises are described as follows: All that certain piece or parcel of land situate in the Township of Ypsilanti in the County of Washtenaw and State of Michigan, and described as follows, to-wit: Lot Seven Hundred Seventy-Nine (779), West Willow Unit No. 10, as recorded in Liber 14 of Plats, Pages 46 and 47, Washtenaw County Records. During the six months immediately following the sale, the property may be redeemed. Dated at Troy, Michigan, March 19, 1980. STAN-DARD FEDERAL SAVINGS AND LOAN ASSOCIATION, A Federal Association Mortgagee. DYKEMA, GOSSETT, SPENCER, GOODNOW & TRIGG Attorneys for Mortgagee 2401 West Big Beaver Rd. Troy, Michigan 48064

**Naturalist Offers Field Trips at Hudson Mills**

Teachers and other group leaders have an opportunity to participate in a naturalist-conducted spring field trip at Hudson Mills Metropark near Dexter starting Tuesday, April 15 by advance appointment only. Appointments are available Tuesdays only and hours are 10 a.m., 11:30 a.m., 1 p.m. and 3 p.m. Groups must be 10 to 35 persons per group and appointments are available by contacting the Naturalist Dept., Huron-Clinton Metropolitan Authority, 2040 Penobscot Bldg., Detroit 48226. Phone 961-5865. Hudson Mills Metropark has a secluded 3/4 mile nature trail that winds through forest and field and along the Huron River. Birds, squirrels, wildflowers and river life are just a few of the many topics that may be examined along the trail. Playground and picnic areas are located within walking distance of the nature trail. Metropark vehicle entry permits are required (Annual: regular, \$7, senior citizen, \$2, or Daily, \$2).

**Farmer-Held Reserve Report**

The U. S. Department of Agriculture has reported that as of March 13, 150,280,223 bushels of corn; 20,481,683 bushels of wheat; 2,427,752 bushels of oats; and 7,181,257 cwt. of sorghum had entered the farmer-held grain reserve since reserve program modifications were announced Jan. 8. USDA reports a total of 765,063,223 bushels of corn; 245,634,683 bushels of wheat; 32,651,752 bushels of oats; and 25,100,000 bushels of barley; and 38,640,257 cwt. of sorghum were in the farmer-held grain reserve as of March 14.

**14th District Court Proceedings**

**Week of March 24-28 Judge Kenneth Bronson Presiding**

Kenneth L. Sharpe was sentenced for failing to pay fines and costs to pay \$25 warrant fee and \$50 or serve five days. Timothy W. Cook was sentenced for impaired driving to serve nine days in the Washtenaw County Jail. Six months probation, no drugs or drinking. No fines or costs. Walter J. Brown was found guilty of attempted larceny under \$100. Sentenced to serve 15 days, concurrent. Hubert Lee Kerton pled guilty to driving without a license. Sentenced to serve three days in the Washtenaw County Jail, suspended. Pay \$155 fines and costs by specified date or serve five days in jail. Charles Ozbat was sentenced for being drunk and disorderly to serve 30 days in the Washtenaw County Jail, straight time. Fines and costs, \$80. Gregory Whitman was sentenced for being drunk and disorderly to three days on the probationary work program and attendance at Alcohol Education Program. Pay \$75.92 restitution. Fines and costs, \$205. Patricia Rogers pled guilty to having a dog at large. Sentenced to pay \$50 fines and costs or serve five days on probationary work program. Fred B. Barnard pled guilty to open intoxicants. Sentenced to one day on probationary work program. Fines and costs, \$50. Richard Earl Wert was sentenced for impaired driving to attend Alcohol Education Program and Human Behavior Classes. Fines and costs, \$350. Robert L. Currie was sentenced for impaired driving to six months probation, attendance at Alcohol Education Program and Human Behavior Classes. No drinking alcohol. 30 days in the Washtenaw County Jail, suspended. Fines and costs, \$155. Robert E. Brehmer was sentenced for impaired driving to attend Alcohol Education Program and pay \$350 fines and costs or serve 20 days in the Washtenaw County Jail. David R. Kast was sentenced for impaired driving to 90 days in the Washtenaw County Jail, suspended. Six months probation, no drinking. Fines and costs, \$555.

Jeffrey G. Beyer was sentenced for joyriding to 10 days in the Washtenaw County Jail. Six months probation, additional 60 days, suspended. Pay \$130 restitution. No alcohol or marijuana. Fines and costs, \$80. Jan M. Long was sentenced for larceny under \$100 to serve two days on probationary work program and pay restitution of \$212.50. Fines and costs, \$100. Darrell Baker was sentenced for larceny under \$100 to pay \$212.50 restitution and \$100 costs. Erwin Herrst was sentenced for being drunk and disorderly to serve 30 days in the Washtenaw County Jail. Attend Alcohol Program or add 60 days. No fines or costs. Erwin Herrst was sentenced for two counts of violation of probation. Sentenced to 45 days in Washtenaw County Jail. Daniel Skodak was sentenced for being drunk and disorderly person to pay \$50 fines and costs. Charles D. Gipson was sentenced for impaired driving to attend six Alcohol Education Program sessions and eight counseling sessions. Sentenced to six days on probationary work program. Fines and costs, \$155. Charles D. Gipson pled guilty with explanation to parking in a handicap zone. Fines and costs, \$25. John E. Martzloff pled guilty to receiving and concealing stolen property, \$100 or less. Sentenced to 90 days in the Washtenaw County Jail. Ricky Miller was sentenced for presenting an operator's license belonging to another to serve three days on probationary work program. Fines and costs, \$255. William L. May pled guilty to impaired driving. Sentenced to attend driving school and pay \$200 fines and costs or serve 10 days in the Washtenaw County Jail. Richard J. Jacobs pled guilty to open intoxicants. Sentenced to one day on probationary work program. Fines and costs, \$50. John E. McKeever pled guilty to open intoxicants. Fines and costs, \$50. Joseph Jakubowski pled guilty to open intoxicants. Sentenced to serve on day on probationary work program. Fines and costs, \$50. Richard Koenig pled guilty to having no valid operator's license on person. Fines and costs, \$40. Patrick A. Marion pled guilty to speeding. Fines and costs, \$50. Alfred Lee Barney was sentenced for driving without a license to serve three days in the Washtenaw County Jail, straight time. Fines and costs, \$255. Arthur L. Scott was sentenced for impaired driving to attend Alcohol Education Program and Human Behavior Classes. Pay \$350 fines and costs by specified date or serve 25 days in the Washtenaw County Jail. Harold D. Roberts was sentenced for impaired driving to attend six sessions of Alcohol Education Program and pay \$200 fines and costs or serve 15 days. Clyde Eric Gow was sentenced for impaired driving to attend Alcohol Education Program and Human Behavior Classes and pay \$100 restitution. Fines and costs, \$300. Thomas Brosnan was sentenced for impaired driving to attend counseling at the Washtenaw County Council on Alcoholism for six months. Fines and costs, \$300. William C. Trombley was sentenced for impaired driving to attend six Alcohol Education Program sessions and pay \$250 fines and costs or serve 15 days. Dunbar Dexter Meat Locker pled guilty to contaminated meat. Fines and costs, \$350. Stephen A. Lyzek was sentenced for impaired driving to complete Alcohol Education Program. Fines and costs, \$300. Kenneth Mahula admitted responsibility to careless driving. Fines and costs, \$50.

**Dexter Township Board Proceedings**

**Special Settlement Day Meeting**  
Date: Monday, March 17, 1980, 7:45 p.m.  
Place: Dexter Township Hall  
Present: John Tandy, Lorinda Jedele, William Eisenbeiser, John Miller, Arlene Howe.  
Meeting called to order by the supervisor, John Tandy.  
Moved by Eisenbeiser, supported by Jedele, to purchase a Xerox copy machine for \$3,080.00. Carried.  
Moved by Howe, supported by Miller, to increase the capital expenditure budget item to \$6,615.87. Carried.  
Moved by Miller, supported by Howe, to extend the Washtenaw County Tax Systems agreement from Jan. 1, 1980 to Dec. 13, 1980. Carried.  
Moved by Howe, supported by Eisenbeiser, to increase budget line items as follows: Clerical to \$1,100. Board of Review to \$800. Printing and office supplies to \$5,200. Mileage to \$1,250. Cemetery and Townhall maintenance to \$125. Carried.  
Moved by Miller, supported by Howe, to pay the bills as submitted. Carried.  
Moved by Miller, supported by Howe, to adjourn the meeting. Carried.  
Meeting adjourned.  
Respectfully submitted, William Eisenbeiser, Dexter Township Clerk.

**Chelsea Village Council Proceedings**

March 25, 1980  
February 28, 1981. No official action was taken.  
President Ritter appointed Merkel, Keezer, Chriswell and himself as a committee to study and make recommendations on the village's salary and wage schedule.  
President Ritter appointed Merkel, Keezer and Sweet as a committee to study landfill user charges and garbage and refuse service fees.  
Motion by Merkel, supported by Keezer, to adjourn. Roll call: Yeas all. Motion carried. Meeting adjourned.  
Frederick A. Weber, Deputy Clerk.  
**For the Record**  
Two inaccurate statements were made in last week's Standard article about the SEVA foundation and its work. According to Dr. Larry Brilliant, there is indeed a five-year timetable for the current blindness project, but that is for the country of Nepal, not the entire world. Further, project workers are looking for a 90 percent reduction in disease-caused blindness, not complete eradication. The article also mentioned an operation that costs \$5 in Nepal. The operation is one for cataracts, not glaucoma as was stated.  
Telephone your club news to 475-1371



THE CHELSEA STANDARD  
Phone (313) 475-1371

**REQUEST FOR BIDS**

The First United Methodist Church of Chelsea is receiving bids for construction to accommodate its new pipe organ. Interested parties should contact Warren McArthur at 475-1625. Bid will include work for masonry, carpentry and electrical.

**EASTER SUNDAY**

at  
**Schumm's**

now accepting  
**Easter Reservations**

Sunday Hours  
11:30 a.m. - 8:30 p.m.

**Easter Specials**

SHRIMP and SCALLOPS  
sautéed in lightly seasoned  
garlic butter.

STEAK and CRAB DINNER

CHICKEN FLORENTINE

also

serving regular Sunday Specials

ROAST TURKEY WITH DRESSING  
ROAST PORK - BAKED SWISS STEAK  
BAKED HAM STEAK

Regular dinners and  
lounge-side menus  
also served

Ph. 475-2020  
for reservations

**GET PROFESSIONAL carpet cleaning results (AT DO-IT-YOURSELF PRICES)**

RENT OUR RINSEVAC—the portable, easy-to-use carpet cleaning machine that gently...  
• rinses carpet fibers with hot water and cleaning solution  
• loosens and lifts dirt, grime and residues to the carpet surface where they are immediately vacuumed up  
• leaves your carpets CLEAN and FRESH!



Rent for only \$10 1/2 day  
**GAMBLES**  
110 N. Main Ph. 475-7472

**AMERICA the BEAUTIFUL**

**The home of the Brave The Land of the Free**  
- to defend the right to - to live, to preach,  
worship God according to teach in city, town  
to conscience. and country.

Hundreds of thousands of God-fearing men, women and youth are gathering in Washington, D.C. to sing, to preach, to parade and to witness to God's goodness, to urge the return of virtue to our life style, and return of righteousness to law and attitude, the return of the Bible as our National Source.

**WASHINGTON for JESUS**  
**April 29, 1980**

Those who cannot go set aside  
this date for prayer and fasting  
- at least one hour  
- at least one meal

**LET THE LORD JESUS CHRIST BE SAVIOR and LORD**

II Chronicles 7:14

If My people who are called by My Name humble themselves and pray, and seek My face, and turn from their wicked ways, then I will hear from heaven, will forgive their sins and heal their land.

Sponsored by friends

# BOWLING NEWS

## Snoopy's Peanut League

Standings as of March 29

W	L
Fireballs	59 28
Kool Kids	56 30 1/2
Team No. 2	45 42
3 L's & M.	40 47
Team No. 8	58 29
Team No. 3	33 54
Team No. 9	22 35
Team No. 7	21 66

150 and over series: J. Gray, 214; T. Rowe, 254, 217; J. Fletcher, 216, 161; S. Baker, 202, 223; C. Gieske, 168; Toney Privatte, 201, 194; M. Karoub, 178; D. Spaulding, 194; Tammy Privatte, 100, 182; Cynthia Gieske, 150; J. Koch, 175, 156; C. White, 158; T. Thurkow, 166, 201; H. Smallwood, 178, 200; L. Boyer, 190, 161; C. Spaulding, 153; D. Buku, 243, 227; J. Boyer, 202; J. Waldyke, 184, 188; L. Hafner, 210, 177; L. Walton, 205, 244; M. Kyte, 267, 162.

80 and over games: J. Gray, 118, 96; T. Rowe, 107, 110, 132, 122; J. Fletcher, 87, 108, 108; S. Baker, 119, 104, 106, 96; C. Gieske, 88, 80; Toney Privatte, 105, 89, 113, 88; M. Karoub, 84, 94; D. Spaulding, 110, 84; Tammy Privatte, 112, 88, 87, 95; Cynthia Gieske, 86; J. Koch, 95, 80, 82; E. Beeman, 92; C. White, 84; T. Thurkow, 101, 100, 88; H. Smallwood, 113, 90, 110; L. Boyer, 106, 84, 82; C. Spaulding, 88, 87; D. Buku, 130, 113, 128, 101; J. Boyer, 95, 107; J. Waldyke, 112, 113; L. Hafner, 91, 119, 92, 85; L. Carstens, 89; K. Jackson, 81; L. Walton, 109, 96, 135, 109; M. Kyte, 127, 140, 99.

## Prep League

Standings as of March 29

W	L
Jacquars	59 31
Dana Chargers	55 34 1/2
Five Musketeers	53 37
Chelsea Wildcats	52 38
The Strikers	43 47
The Pros	39 51
X Marks The Spot	33 56 1/2
Midnight Bowlers	26 64

Games 100 and over: S. Hunn, 114; J. Leisinger, 120; J. Stephens, 111; D. Waldyke, 109; C. Baker, 125, 102; P. Shures, 130; G. Boyer, 109, 116; D. Thompson, 122, 145; J. Jedele, 105; T. Weir, 171; K. Thayer, 149, 184; T. Bowdish, 143; M. Ryan, 116; S. Wolak, 107, 109; J. Boyer, 108; M. Ahrens, 144; E. Harook, 102; R. Derby, 102, 106; D. Cox, 107, 115; P. Fletcher, 184, 134; H. Morrell, 154, 105; J. Toon, 159, 134; D. Collins, 118, 133; D. Dettling, 127, 112; C. Alexander, 125, 101; T. Harook, 161, 160; J. Ritter, 121; C. Schulze, 115, 135; Dean Boote, 119; David Boote, 158, 104; E. Zink, 106, 101; M. Ryan, 110.

200 series and over: S. Hunn, 208; J. Leisinger, 206; D. Waldyke, 208; C. Baker, 227; P. Shures, 222; G. Boyer, 225; D. Thompson, 287; J. Jedele, 201; T. Weir, 257; K. Thayer, 333; T. Bowdish, 239; S. Wolak, 216; M. Ahrens, 214; R. Derby, 208; D. Cox, 222; P. Fletcher, 318; H. Morrell, 259; J. Toon, 293; D. Collins, 251; D. Dettling, 239; C. Alexander, 226; T. Harook, 321; J. Ritter, 214; C. Schulze, 250; Dean Boote, 209; David Boote, 262; E. Zink, 207; M. Ryan, 203.

## Leisure Time League

Standings as of March 27

W	L
Mamas & Grandmas	68 48
Lucky Strikers	68 48
Misfits	63 52 1/2
The Late Ones	60 55 1/2
Rockettes	59 52 1/2
Split Ends	58 58
Lady Bugs	56 59 1/2
Sweetrollers	54 61 1/2
Alley Cats	50 65 1/2
Handicappers	49 67
Shud-O-Bens	40 72

500 series and over: D. Clark, 506.  
400 series and over: S. Roehm, 440; R. Forner, 435; E. Heller, 448; S. Friday, 437; K. Haywood, 419; G. Wheaton, 439; M. Kolander, 451; T. Reilly, 431; H. Lancaster, 419; J. Westphal, 459; H. Dittmar, 414; M. Herrin, 400; P. Whitesall, 442; S. Kulenkamp, 437; C. Hoffman, 433; B. Griffin, 407; G. Feldman, 471; P. Williams, 469; E. Swanson, 422; S. Heim, 401; D. Ringe, 423; W. Picklesimer, 408; E. Williams, 424.

Games 140 and over: S. Roehm, 145, 158; R. Forner, 170; E. Heller, 162, 156; C. Haskenkamp, 146; J. Robards, 147; B. Kies, 151; S. Friday, 180; K. Haywood, 146; G. Wheaton, 182, 141; M. Hanna, 148; M. Kolander, 141, 184; D. Clark, 190, 186; N. Wilson, 148; T. Reilly, 193; H. Lancaster, 155; J. Westphal, 163, 171; R. Dils, 140; H. Dittmar, 140; M. Herrin, 144; M. Chasteen, 145; P. Whitesall, 147, 162; S. Kulenkamp, 148, 170; J. Manley, 140; C. Hoffman, 169; P. Weigand, 142; B. Griffin, 149; G. Feldman, 146, 154, 171; P. Williams, 164, 159, 146; E. Swanson, 150, 156; S. Heim, 140; D. Ringe, 170; W. Picklesimer, 146; G. DuBois, 151; E. Williams, 151.

## Junior House League

Standings as of March 27

W	L
Washtenaw Eng.	112 8
Micro Data Devices	118 92
Wolverine Bar	116 94
Mich. Livestock Exch.	113 97
D. D. Deburring	113 97
A. A. Centerless	110 100
Roberts Pnt & Body	110 100
Rockwell International	109 101
Chelsea Lanes	107 103
F. J. Siller & Co.	103 107
Captains Table	103 107
3-D Sales & Service	101 108
Jiffy Mix	101 108
Associated Drywall	97 113
Ypsi Asphalt	97 113
Hanco Sports	93 117
Mark IV Lounge	86 117
Smith's Service	86 117

Donates week to make-up.  
600 series or over: J. Harook, 610.  
525 series or over: R. V. Worder, 574; V. Hafner, 543; M. Smith, 539; G. Weir, 567; D. Buku, 592; N. Fahrner, 554; R. Duncan, 537; D. Carpenter, 534; C. Koenn, 563; L. Fahrner, 563; P. Kelly, 565; R. Widmayer, 557; T. Dittmar, 528; G. Beeman, 591; B. Prater, 539; L. Keezer, 558; J. Briffous, 538; B. Usher, 532; K. Unterbrink, 527; V. Dixon, 529; E. GreenLeaf, 568; J. Risner, 569; G. Biggs, 554; H. Pennington, 535; G. Fouty, 529; D. Alexander, 543; D. Warren, 537.  
210 games or over: J. Harook, 245; G. Weir, 229; D. Buku, 214; C. Koenn, 220; G. Seitz, 231; R. Widmayer, 221; G. Beeman, 224.

## Chelsea Lanes Mixed

Standings as of March 28

W	L
Fubar's	136 74
Ann Arbor Centerless	135 75
Spring Oak Grnhse	134 76
VFW	125 85
Hawley Truck Repair	117 93
Accra Gage	114 96
Turkeys	110 100
DeWolfe Excavators	102 100 1/2
Two Plus Two	102 101
Federal Screw Outlw.	98 112
Bottoms Up	96 114
Hank's Marina	95 115
Chelsea Sofspira	92 118
White Lightning	88 121 1/2
Fireballs	87 123 1/2
Fox Point Flashes	87 123 1/2
North Lake Dunlprps.	84 125 1/2
J2-D2	79 131

Women, 425 series and over: D. Verwey, 553; D. Hawley, 478; L. Behnke, 486; J. Norris, 509; H. Scripser, 443; T. Steinaway, 457; D. Oesterle, 425.  
Men, 475 series and over: E. Keezer, 565; L. Keezer, 530; R. Whiting, 542; A. Sannes, 553; A. Hawley, 518; N. Jose, 496; A. Torrice, 571; D. Williams, 531; J. Richmond, 489; W. Kulenkamp, 491; W. Steinaway, 534; R. Zatorski, 518.

Women, 150 games and over: D. Vasher, 150, 159; M. Stafford, 150; D. Verwey, 181, 197, 175; S. Whiting, 154; D. Hawley, 178, 156; J. Jose, 151; R. Presnell, 165; J. Cook, 155; L. Behnke, 162, 199; J. Kent, 159; J. Norris, 151, 173, 185; H. Scripser, 165; T. Steinaway, 157, 163; D. Oesterle, 161.

Men, 175 games and over: E. Keezer, 232, 204; L. Keezer, 194; T. Stafford, 191; H. Kaiser, 175; R. Whiting, 179, 196; A. Sannes, 190, 214; A. Hawley, 200; N. Jose, 193; C. Neuman, 195; A. Torrice, 197, 190, 184; D. Williams, 182, 180; J. Richmond, 184; F. White, 177; W. Kulenkamp, 186; W. Steinaway, 175, 194; A. Oesterle, 185; R. Zatorski, 212.

## Tri-City Mixed

Standings as of March 21

W	L
Fitzsimmons Excav.	134 69
Chelsea Big Boy	121 82
Pinnacle Eng.	119 84
Central Fibre	119 84
Ken's Glass	116 87
Rod's Roofing	115 88
Williams & Lisznay	111 92
Seitz's Tavern	106 97
Inverness Inn	102 101
Hanewald & Frey	100 103
Mitchel Building	95 108
Palmer Ford	93 110
Portage Hardware	92 111
Wolverine Bar	86 117
Assoc Spring	84 119
Bck Dr Party Store	83 120
Jose & Sannes	76 127
Williams Crpt Serv.	75 128

500 series, men: G. Biggs, 569; G. Burnett, 520; S. Cavender, 519; V. Hafner, 511; J. Harook, 542; D. Jose, 557; H. Kunzelman, 510; H. Matthews, 500; C. Myers, 525; L. Schneider, 523; J. Shadley, 508; J. Stoffel, 543; J. Tindall, 522.  
200 games, men: G. Biggs, 200; S. Cavender, 201; J. Harook, 208; D. Jose, 211; J. Shadley, 217.  
450 series, women: M. Biggs, 472; S. Clark, 481; J. Collins, 487; E. Finfrock, 468; H. Fox, 470; J. Hafner, 500; P. Harook, 482; E. Hinz, 492; V. Matthews, 486; G. Ritchie, 471; S. Thurkow, 461; E. Tindall, 453; L. VanDeven, 485; M. Wescott, 519; S. Williams, 456.  
150 games, women: M. Biggs, 159, 177; J. Burnett, 160; S. Clark, 185, 150; J. Collins, 182, 158; E. Finfrock, 193; B. Fike, 152, K. Fletcher, 154, 155; H. Fox, 152, 157, 161; E. Frey, 167; H. Furgason, 153; D. Gerig, 160; J. Hafner, 154, 178, 168; P. Harook, 177, 155, 160; D. Hanewald, 166; E. Hinz, 167, 180; B. Kunzelman, 154; P. Lisznay, 155; V. Matthews, 189, 168; M. Myers, 162; G. Ritchie, 158, 168; C. Shadley, 180; C. Stoffel, 155; S. Thurkow, 211; E. Tindall, 167; L. VanDeven, 226; M. Westcott, 167, 204, 151; S. Williams, 156, 169.

200 games, men: G. Biggs, 200; S. Cavender, 201; J. Harook, 208; D. Jose, 211; J. Shadley, 217.  
450 series, women: M. Biggs, 472; S. Clark, 481; J. Collins, 487; E. Finfrock, 468; H. Fox, 470; J. Hafner, 500; P. Harook, 482; E. Hinz, 492; V. Matthews, 486; G. Ritchie, 471; S. Thurkow, 461; E. Tindall, 453; L. VanDeven, 485; M. Wescott, 519; S. Williams, 456.  
150 games, women: M. Biggs, 159, 177; J. Burnett, 160; S. Clark, 185, 150; J. Collins, 182, 158; E. Finfrock, 193; B. Fike, 152, K. Fletcher, 154, 155; H. Fox, 152, 157, 161; E. Frey, 167; H. Furgason, 153; D. Gerig, 160; J. Hafner, 154, 178, 168; P. Harook, 177, 155, 160; D. Hanewald, 166; E. Hinz, 167, 180; B. Kunzelman, 154; P. Lisznay, 155; V. Matthews, 189, 168; M. Myers, 162; G. Ritchie, 158, 168; C. Shadley, 180; C. Stoffel, 155; S. Thurkow, 211; E. Tindall, 167; L. VanDeven, 226; M. Westcott, 167, 204, 151; S. Williams, 156, 169.

## Senior House League

Standings as of March 31

W	L
K. of C.	65 26
Wash Engineering	63 28
Schneider	63 28
Freeman Machine	59 32
Steele's Heating	58 33
Frank Grohs Chev.	54 37
Kilbreath's Trucking	51 40
Village Motors	49 42
McCalla Feeds	48 43
Bauer Builders	47 44
Holsworth's Chfs.	44 47
VFW No. 4076	43 48
Central Fibre	41 50
C & J Body	40 51
S J Custom	39 52
Walt's Barber Shop	32 59
Chelsea Lumber	16 75
Deansboro	7 84

525 series: J. Harook, 551; D. Buku, 555; M. Poertner, 569; R. Zatorski, 560; D. Elfe, 559; T. Schulze, 546; D. Clark, 532; K. Sprague, 560; D. Barnhill, 552; L. Keezer, 549; G. Packard, 547; L. Marshall, 557; R. Herrst, 538; D. Hafley, 528; C. Coltre, 565; J. Bauer, 547; H. McCalla, 528; G. Burnett, 568; A. Zangara, 525; F. Modrzewski, 583; C. Sannes, 544.  
210 games: C. Sannes, 236; G. Burnett, 224; F. Modrzewski, 226; L. Marshall, 232; R. Herrst, 223; K. Sprague, 213; D. Barnhill, 222.

Subscribe today to The Standard.

## Chelsea Women's Bowling Club

Standings as of March 25

W	L
Chelsea Milling	75 41
Jiffy Mixers	71 45
The Big F	64 51 1/2
Parish Cleaners	64 52
Knights of Columbus	63 52 1/2
Wolverine Bar	63 53
Countyside Builders	61 55
Norris Electric	57 59
Palmer Leasing	56 60
Laura's Beauty	56 60
Freeman Machine	53 62 1/2
Heller Electric	53 63
Bailey's Girls	52 64
IPSCO	49 67
Klink Excavating	46 69 1/2
Alley Cats	43 73

High team series: Laura's, 2,240.  
High ind. series: R. Hummel, 527.  
High ind. game: J. Johnston, 196.

Games over 150: B. Wright, 153, 154; M. Poynter, 178; L. McGuire, 178, 157, 167; D. Alexander, 178; L. Schanz, 155; M. Jacobinski, 155; K. Powers, 157; E. Niebauer, 158, 171; J. Modrzewski, 170, 158; E. Unterbrink, 182; J. Pagliarini, 157, 160; B. Houle, 170; H. Fox, 162, 156; M. Privatte, 176; S. Ritz, 150; D. Judson, 185, 155; S. Girard, 167, 171; M. McGuire, 154; D. Verwey, 166, 157; T. Kenny, 156; M. Eder, 165; S. Ringe, 171; P. Poertner, 175, 180, 151; C. Klink, 174, 168; D. Frisbie, 153; N. Smith, 155, 153; L. Orlowski, 159; B. Gregory, 159; L. Page, 187; S. Bailey, 172; J. Andariese, 165, 167; D. Scott, 155; J. Hafner, 150; R. Klink, 155, 151; G. Beeman, 152; B. Bauer, 157; J. Norris, 168; J. Johnston, 196, 184; D. S. Alber, 182; J. Schulze, 155; D. Alber, 158; C. Bradbury, 159, 164; R. Hummel, 170, 179, 178; P. Wurster, 153, 170; N. Kern, 168, 153; C. Ziegler, 164.

Series over 450: L. McGuire, 502; E. Niebauer, 468; J. Modrzewski, 472; J. Pagliarini, 466; D. Judson, 459; S. Girard, 486; D. Verwey, 472; P. Poertner, 506; C. Klink, 478; J. Andariese, 476; P. Fitzsimmons, 460; J. Johnston, 526; R. Hummel, 527; N. Kern, 456; C. Ziegler, 451; D. Alber, 457.

## Junior Swingers

Standings as of March 29

W	L
Super Strikers	73 47
Pirates	72 48
No Minds II	69 51
D.R.E.A.D.	64 55 1/2
Chelsea Gooffs	61 58 1/2
Chompin' Beavers	61 59
Misfits	53 67
Twiggy Haren	47 73

Girls, high games, 150 and over: T. Schulze, 151; K. Forner, 180; S. Messner, 199, 165.  
Boys, high games, 170 and over: M. Gipson, 179; M. Selwa, 184; J. Beaver, 181; D. Alber, 206, 171.  
Girls, high series, 425 and over: S. Messner, 459.  
Boys, high series, 450 and over: D. Boyer, 472; S. Wilson, 461; J. Beaver, 458; D. Alber, 525; M. Selwa, 466; G. Anderson, 477.

## Super Six League

Standings as of March 26

W	L
Ribbits	123 94
Wonder Women	120 97
Leftovers	113 104
Screwballs	105 112
Lucky Strikes	99 118
G & L's	91 126

Games of 140 and over: Lori Butler, 141; Lois Butler, 157, 146; D. Taylor, 154, 167; C. Collins, 147; M. Erisler, 159; C. Colvin, 163; K. GreenLeaf, 162, 156, 163; L. Lukasiak, 161, 143; M. L. Westcott, 192, 185, 163; L. Westcott, 147; C. Reynolds, 164; K. Buss, 149; M. Adams, 152, 167; L. White, 148, 140; K. GreenLeaf, 152, 141, 212; L. Clark, 183, 155; T. Whitley, 142, 160, 146; P. Clark, 157.  
Series of 425 and over: D. Taylor, 457; K. Clark, 481; M. L. Westcott, 540; M. Adams, 426; K. GreenLeaf, 505; Lois Clark, 461; T. Whitley, 448.

## Rolling Pin League

Standings as of April 1

W	L
Mixers	74 42
Troopers	72 44
Beaters	70 45 1/2
Kitchen Kapers	68 48
Pots	68 48
Grinders	64 52
Sugar Bowls	64 52
Jelly Rollers	62 54 1/2
Coffee Cups	61 55
Brooms	57 58 1/2
Jolly Mops	57 59
Silverware	53 62 1/2
Kookie Cutters	53 63
Dishwashers	46 70
Sweet Rolls	43 72 1/2
Spooners	43 73
Poachers	42 74
Blenders	40 75 1/2

400 series and over: P. Smith, 440; L. Stoll, 444; J. Smith, 490; M. Biggs, 425; C. Baker, 481; V. Workman, 464; L. Hollo, 440; B. Selwa, 481; E. Swanson, 412; C. Williams, 403; H. Ringe, 415; G. Feldman, 428; E. Heller, 423; D. Klink, 402; G. Clark, 440; G. Klink, 471; E. Whitaker, 473; M. Erskine, 421; P. Wurster, 443; M. Ritz, 444; S. Ritz, 439; M. Kozmonski, 469; R. Bushway, 486; E. Williams, 413; D. Williams, 415; J. Edick, 440; M. Bradley, 450; K. Stanchfield, 424; S. Bauer, 401; G. Haist, 421; M. Plumb, 471; A. Grau, 441; D. Mann, 423; N. Hill, 417; G. Shonk, 420; C. Rob, 440; J. Cronkhitte, 403.

140 games and over: P. Smith, 140, 163; L. Stoll, 160, 164; J. Smith, 150, 160, 180; H. Picklesimer, 156; M. Biggs, 146, 148; C. Baker, 162, 171, 148; V. Workman, 192; P. Harook, 148, 193, 173; S. Seitz,

## Psychology Award

Chelsea High school junior Patrick Powers, son of Mr. and Mrs. Robert H. Powers, has received the psychology class award.

Patrick's strong participation, keen interest and good grades in the class brought him success at capturing the award.

Pat voices original opinions and interesting comments about the material presented. His comments frequently stimulate the interest of others.

Often, Pat expresses his views through examples of everyday experiences, which helps other students to better understand some of the difficult concepts.

The psychological concept of positive motivation and reinforcement in learning lends purpose to the award. It is positive reinforcement to motivate students to be successful in future learning situations.

Patrick said: "I'm glad to be placed in the same group as Julie and Scott. The class is very interesting."



PATRICK POWERS

Pickle producers in Michigan normally sign contracts with growers to buy all harvested cucumbers. Cucumbers too large to make into whole pickles are sliced for spears, diced for relishes or processed into pickle slices.

### Phone by the Mile

The technology must have amazed readers of Boston newspapers on April 29, 1878. In bold type, an advertisement offered "A Telephone, \$3, Guaranteed to Work 1 mile. One Guaranteed to Work 5 miles, \$5." Examples of such early communications implements are on exhibit in the 8-acre Hall of Technology of Henry Ford Museum, Dearborn.

## Biddy Basketball Season Concluded

Chelsea Biddy Basketball action ended for the ABA and WBA March 22 as all teams met for a special events day. Players in both leagues competed for first-, second- and third-place prizes in each of five events. The competition yielded the following results:

**WBA**  
**Lay-ups**—Peter Spencer, 1st; John Collins, 2nd; Chad Starkey, 3rd.  
**Hot Spot**—Chad Starkey, 1st; Peter Spencer, 2nd; Matt Wels, 3rd.

**Free Throws**—Peter Spencer, 1st; Chad Starkey, 2nd; Loren Keezer, 3rd.  
**Speed Dribbling**—Larry Nix, 1st; Chad Starkey, 2nd; Peter Spencer, 3rd.

**Bounce Passes**—Chad Starkey, 1st; Jude Quilter, 2nd; Larry Nix, 3rd.

**ABA**  
**Lay-ups**—Mark Bareis, 1st; Todd Starkey, 2nd; Steve Petty, 3rd.

**Hot Spot**—Jeff Stacey, 1st; Tim Anderson, 2nd; Robbie McDowell, 3rd.

**Free Throws**—Craig Maynard, 1st; Mark Bareis, 2nd; Doug Williams and Robbie McDowell (tie), 3rd.

**Speed Dribbling**—Todd Starkey, 1st; John Cattell, 2nd; Mark Bareis, 3rd.

**Bounce Passes**—Jeff Stacey, 1st; Doug Williams, 2nd; John Cattell, 3rd.

In addition, each player was presented with a ribbon denoting participation for the year. Those not present Saturday may pick up their ribbons at the Chelsea

### Paul D. Hultquist Completes Navy Recruit Training

Navy Seaman Recruit Paul D. Hultquist, son of Harold M. and Aline K. Hultquist of 1063 N. Parker Rd., Dexter, has completed recruit training at the Naval Training Center, Great Lakes, Ill.

During the eight-week training cycle, he studied general military subjects designed to prepare him for further academic and on-the-job training in one of the Navy's 85 basic occupational fields.

Included in his studies were seamanship, close-order drill, Naval history and first aid. Personnel who complete this course of instruction are eligible for three hours of college credit in Physical Education and Hygiene.

A 1979 graduate of Dexter High school, he joined the Navy in December 1979.

## Jaycettes Sponsor Pet Food Drive

After a very successful effort last year, Chelsea's Jaycee Auxiliary will again sponsor a pet food drive. The community is asked to donate any kind or type of pet food, to be given to the Huron Valley Human Society for the animals housed there.

Collection days will be April 2-16, and containers for the drop-offs will be located at Polly's, Jiffy Market and Rick's Market.

Please Notify Us In Advance of Any Change in Address

## NOW ON TUESDAY NIGHTS CHICKEN BUFFET

Thursday, Friday, Saturday open till 7



NOW SERVING COCKTAILS IN OUR NEW BAR

our Famous Deep-Fried Chicken and SPECIAL BARBECUED CHICKEN also mashed potatoes and gravy, dressing, and salad bar. Serving from 4:30-9:30

at the CAPTAINS TABLE

8093 MAIN ST., DEXTER

PH. 426-3811

## Is Spring cleaning the car your job?

50% Off!  
Car Interior Protection

Let Tidy Car Do It!

It's tough to keep the car clean all winter long. And, no matter what you do, by Spring, your car's interior is ready for a real scrub job. Before you go to the garage for the buckets and brushes, call Tidy Car. We'll do a thorough and professional job of cleaning your car's interior. It'll look new when we're through! And, as a special bonus, we'll give you 50% off a Tidy Car interior protection treatment. Our special treatment guards against staining and makes your cleaning jobs much easier.

Call Tidy Car today!

See the full page Tidy Car adv. in the May issue of Playboy.

### Tompkins Elegant Autos

3663 S. M-52, Chelsea, Mich.

(2 miles south of I-94, Exit 159)

Ph. (313) 475-2952

Offer expires April 15, 1980.



# Easter Flowers

## CHELSEA KIWANIS CLUB FLOWER SALE

All profits go for community service projects.



## FRIDAY and SATURDAY APRIL 4-5

Fri., 8 a.m. to 1 p.m., 3 p.m. to 9 p.m. - Sat., 8 a.m. to 6 p.m.

- at -

HEYDLAUFF'S, 113 N. Main St.

'Remember Her With Flowers'

## EASTER SPECIAL

FREE Popcorn Popper and Coffee Maker with purchase of any Touchmatic II Radarange during Easter Week-end.

\$40 Value.

## COOKING DEMONSTRATION

ANOTHER AMANA FIRST...EXCLUSIVE

# Amana Radarange

MICROWAVE OVEN

## ROTAWAVE COOKING SYSTEM

A rotating shower of power that cooks more evenly and cooks most foods faster than ever before!

The Rotawave antenna beams microwave energy directly at food in a uniform, rotating pattern.

**SO FOODS COOK MORE EVENLY.**  
Even rows of cookies, or several potatoes cook more evenly.

**BETTER FOOD QUALITY**  
Breads, cakes—even egg dishes—turn out lighter and fluffier. Meats brown more evenly.

**AND IT'S MORE CONVENIENT!**  
Rotawave rotates the microwaves, so most foods require no turning!

**MOST FOODS COOK FASTER.**  
Some foods like cakes, pies and muffins now bake up to twice as fast!

Come in to see a demonstration.  
Rotawave is available on 700-watt Amana Radarange Microwave Ovens RR-10A, RR-9TA, RR-8A, RR-7A and RR-7DA. It's the best thing that's happened to cooking since microwaves!  
And it's only from Amana!

## COOKING DEMONSTRATION

SATURDAY, APRIL 5 . . . . 10 a.m. to 2 p.m.

LENORE MATTOFF will be in our store to demonstrate and answer questions about microwave cooking.

# HEYDLAUFF'S

113 N. Main St., Chelsea Ph. 475-1221

COOKING DEMONSTRATION

COOKING DEMONSTRATION